

## Product datasheet

# Anti-COMT antibody ab98103

1 Image

### Overview

<b>Product name</b>	Anti-COMT antibody
<b>Description</b>	Rabbit polyclonal to COMT
<b>Host species</b>	Rabbit
<b>Tested applications</b>	<b>Suitable for:</b> WB
<b>Species reactivity</b>	<b>Reacts with:</b> Human <b>Predicted to work with:</b> Mouse, Rat, Rabbit, Horse, Chicken, Guinea pig, Cow, Cat, Pig
<b>Immunogen</b>	Synthetic peptide corresponding to a region within internal amino acids 143-192 (PDCAAITQRM VDFAGVKDKV TLVVGASQDI IPQLKKKYDV DTLDMVFLDH) of Human COMT (NP_000745). <a href="#">Run BLAST with ExPASy</a> <a href="#">Run BLAST with NCBI</a>
<b>Positive control</b>	Human fetal stomach lysate

### Properties

<b>Form</b>	Liquid
<b>Storage instructions</b>	Shipped at 4°C. Upon delivery aliquot and store at -20°C. Avoid repeated freeze / thaw cycles.
<b>Storage buffer</b>	Preservative: None Constituents: PBS
<b>Purity</b>	Immunogen affinity purified
<b>Clonality</b>	Polyclonal
<b>Isotype</b>	IgG

### Applications

Our [Abpromise guarantee](#) covers the use of **ab98103** in the following tested applications.

The application notes include recommended starting dilutions; optimal dilutions/concentrations should be determined by the end user.

Application	Abreviews	Notes
WB		Use a concentration of 1 µg/ml. Predicted molecular weight: 30 kDa. Good results were obtained when blocked with 5% non-fat dry milk in 0.05% PBS-T.

## Target

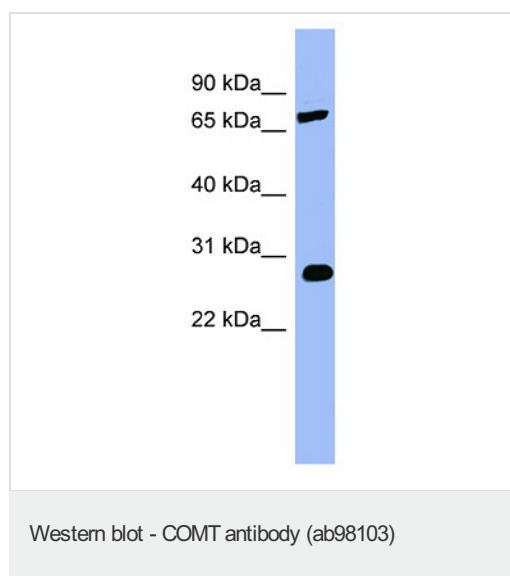
---

<b>Function</b>	Catalyzes the O-methylation, and thereby the inactivation, of catecholamine neurotransmitters and catechol hormones. Also shortens the biological half-lives of certain neuroactive drugs, like L-DOPA, alpha-methyl DOPA and isoproterenol.
<b>Tissue specificity</b>	Brain, liver, placenta, lymphocytes and erythrocytes.
<b>Sequence similarities</b>	Belongs to the mammalian catechol-O-methyltransferase family.
<b>Post-translational modifications</b>	The N-terminus is blocked.
<b>Cellular localization</b>	Cytoplasm and Cell membrane.

---

## Images

---



Anti-COMT antibody (ab98103) at 1 µg/ml +  
Human fetal stomach lysate at 10 µg

**Predicted band size:** 30 kDa

Gel concentration 12%

**Please note:** All products are "FOR RESEARCH USE ONLY AND ARE NOT INTENDED FOR DIAGNOSTIC OR THERAPEUTIC USE"

## Our Abpromise to you: Quality guaranteed and expert technical support

---

- Replacement or refund for products not performing as stated on the datasheet
- Valid for 12 months from date of delivery
- Response to your inquiry within 24 hours
  
- We provide support in Chinese, English, French, German, Japanese and Spanish
- Extensive multi-media technical resources to help you
- We investigate all quality concerns to ensure our products perform to the highest standards

If the product does not perform as described on this datasheet, we will offer a refund or replacement. For full details of the Abpromise, please visit <http://www.abcam.com/abpromise> or contact our technical team.

## Terms and conditions

- 
- Guarantee only valid for products bought direct from Abcam or one of our authorized distributors