


Product datasheet

Anti-C22orf28 antibody ab98138

1 Image

Overview

<b>Product name</b>	Anti-C22orf28 antibody
<b>Description</b>	Rabbit polyclonal to C22orf28
<b>Tested applications</b>	<b>Suitable for:</b> WB
<b>Species reactivity</b>	<b>Reacts with:</b> Human <b>Predicted to work with:</b> Mouse, Rat, Rabbit, Horse, Chicken, Guinea pig, Cow, Cat, Dog, Drosophila melanogaster, Zebrafish 
<b>Immunogen</b>	Synthetic peptide corresponding to a region within internal sequence amino acids 359-408 of Human C22orf28 (NP_055121). <a href="#">Run BLAST with ExPASy</a> <a href="#">Run BLAST with NCBI</a>
<b>Positive control</b>	MCF7 cell lysate

Properties

<b>Form</b>	Liquid
<b>Storage instructions</b>	Shipped at 4°C. Upon delivery aliquot and store at -20°C. Avoid repeated freeze / thaw cycles.
<b>Storage buffer</b>	Preservative: None Constituents: 2% Sucrose, PBS
<b>Purity</b>	Immunogen affinity purified
<b>Clonality</b>	Polyclonal
<b>Isotype</b>	IgG

Applications

Our [Abpromise guarantee](#) covers the use of **ab98138** in the following tested applications.

The application notes include recommended starting dilutions; optimal dilutions/concentrations should be determined by the end user.

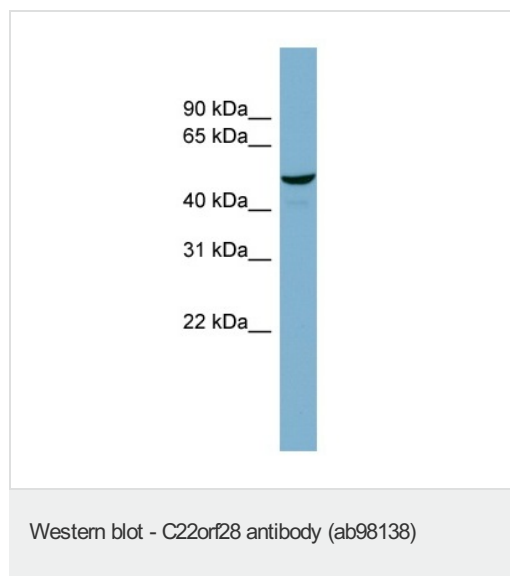
Application	Abreviews	Notes
-------------	-----------	-------

Application	Abreviews	Notes
WB		Use a concentration of 1 µg/ml. Predicted molecular weight: 55 kDa. Optimal concentration of antibody depends the protein level in a given sample. Our recommended concentrations are the starting point for general use. Customers are advised have to do a series of titration tests to determine optimal concentration. Good results were obtained when blocked with 5% non-fat dry milk in 0.05% PBS-T.

## Target

<b>Function</b>	Catalytic subunit of the tRNA-splicing ligase complex that acts by directly joining spliced tRNA halves to mature-sized tRNAs by incorporating the precursor-derived splice junction phosphate into the mature tRNA as a canonical 3',5'-phosphodiester. May act as an RNA ligase with broad substrate specificity, and may function toward other RNAs.
<b>Sequence similarities</b>	Belongs to the RtcB family.
<b>Cellular localization</b>	Nucleus. Cytoplasm. Enters into the nucleus in case of active transcription while it accumulates in cytosol when transcription level is low.

## Images



Anti-C22orf28 antibody (ab98138) at 1 µg/ml  
(in 5% skim milk / PBS buffer) + MCF7 cell  
lysate at 10 µg

### Secondary

HRP conjugated anti-Rabbit IgG at 1/50000  
dilution

**Predicted band size : 55 kDa**

**Please note:** All products are "FOR RESEARCH USE ONLY AND ARE NOT INTENDED FOR DIAGNOSTIC OR THERAPEUTIC USE"

## Our Abpromise to you: Quality guaranteed and expert technical support

- Replacement or refund for products not performing as stated on the datasheet
- Valid for 12 months from date of delivery
- Response to your inquiry within 24 hours
- We provide support in Chinese, English, French, German, Japanese and Spanish
- Extensive multi-media technical resources to help you
- We investigate all quality concerns to ensure our products perform to the highest standards

If the product does not perform as described on this datasheet, we will offer a refund or replacement. For full details of the Abpromise, please visit <http://www.abcam.com/abpromise> or contact our technical team.

## Terms and conditions

---

- Guarantee only valid for products bought direct from Abcam or one of our authorized distributors