

Product datasheet

Rat monoclonal [187.1] Anti-Mouse kappa light chain (Biotin) ab99618

2 Images

Overview

Product name	Rat monoclonal [187.1] Anti-Mouse kappa light chain (Biotin)
Host species	Rat
Target species	Mouse
Specificity	ab99618 reacts with mouse kappa light chains. Does not react with other immunoglobulin isotypes or lambda light chains.
Tested applications	Suitable for: ELISA, Flow Cyt, ICC/IF
Immunogen	Other Immunogen Type corresponding to Kappa light chain.
Conjugation	Biotin

Properties

Form	Liquid
Storage instructions	Shipped at 4°C. Store at +4°C short term (1-2 weeks). Upon delivery aliquot. Store at -20°C or -80°C. Avoid freeze / thaw cycle.
Storage buffer	Preservative: 0.1% Sodium Azide Constituents: PBS
Purity	Protein A purified
Clonality	Monoclonal
Clone number	187.1
Isotype	IgG1
Light chain type	kappa

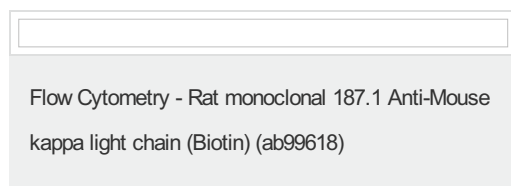
Applications

Our [Abpromise guarantee](#) covers the use of **ab99618** in the following tested applications.

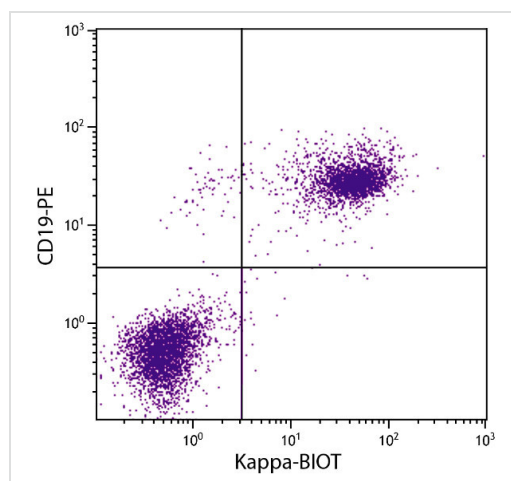
The application notes include recommended starting dilutions; optimal dilutions/concentrations should be determined by the end user.

Application	Abreviews	Notes
ELISA		Use at an assay dependent concentration.
Flow Cyt		Use 1µg for 10 ⁶ cells. ab18403 - Rat monoclonal IgG1, is suitable for use as an isotype control with this antibody.
ICC/IF		Use at an assay dependent concentration.

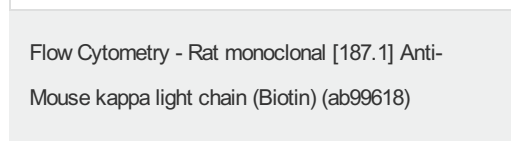
Images



Flow Cytometry analysis of BALB/c mouse splenocytes stained with Rat monoclonal 187.1 Anti-Mouse kappa light chain (Biotin) ab99618 (1 µg/10⁶ cells), and Rat Anti-Mouse CD19-PE followed by Streptavidin-FITC.



Flow Cytometry analysis of BALB/c mouse splenocytes stained with Rat monoclonal 187.1 Anti-Mouse kappa light chain (Biotin) ab99618 (1 µg/10⁶ cells), and Rat Anti-Mouse CD19-PE followed by Streptavidin-FITC.



Please note: All products are "FOR RESEARCH USE ONLY AND ARE NOT INTENDED FOR DIAGNOSTIC OR THERAPEUTIC USE"

Our Abpromise to you: Quality guaranteed and expert technical support

- Replacement or refund for products not performing as stated on the datasheet
- Valid for 12 months from date of delivery
- Response to your inquiry within 24 hours
- We provide support in Chinese, English, French, German, Japanese and Spanish
- Extensive multi-media technical resources to help you
- We investigate all quality concerns to ensure our products perform to the highest standards

If the product does not perform as described on this datasheet, we will offer a refund or replacement. For full details of the Abpromise, please visit <http://www.abcam.com/abpromise> or contact our technical team.

Terms and conditions

- Guarantee only valid for products bought direct from Abcam or one of our authorized distributors