

Product datasheet

Anti-alpha 1 Antichymotrypsin antibody, prediluted ab921

[1 Image](#)

Overview

Product name	Anti-alpha 1 Antichymotrypsin antibody, prediluted
Description	Rabbit polyclonal to alpha 1 Antichymotrypsin, prediluted
Host species	Rabbit
Specificity	The antibody is specific for human alpha-1-antichymotrypsin. This antibody stains monocytes and macrophages in human tissues and does not stain any other cell type.
Tested applications	Suitable for: IHC-P, IHC-Fr
Species reactivity	Reacts with: Human Does not react with: Mouse, Rat, Sheep, Horse, Cow, Cat, Dog, Pig
Immunogen	Alpha-1-antichymotrypsin isolated from human serum.

Properties

Form	Liquid
Storage instructions	Shipped at 4°C. Store at +4°C. Do Not Freeze.
Storage buffer	Preservative: 0.05% Sodium Azide Constituents: Inert stabilizer
Purity	Protein A purified
Clonality	Polyclonal
Myeloma	unknown
Isotype	IgG

Applications

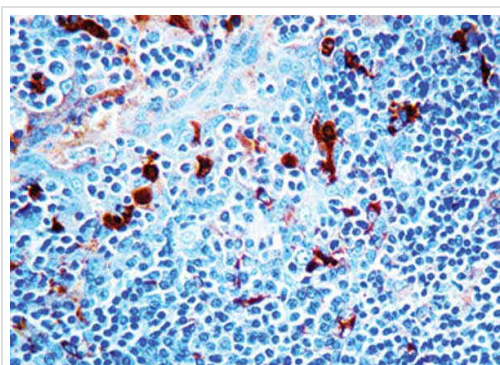
Our [Abpromise guarantee](#) covers the use of **ab921** in the following tested applications.

The application notes include recommended starting dilutions; optimal dilutions/concentrations should be determined by the end user.

Application	Abreviews	Notes
IHC-P		

Application	Abreviews	Notes
IHC-Fr		
Application notes	<p>This antibody has been pretitered and quality controlled to work on formalin-fixed paraffin-embedded as well as acetone fixed cryostat tissue sections.</p> <p>No further titration is required.</p> <p>We suggest an incubation period of 30-60 minutes at room temperature.</p> <p>However, depending upon the fixation conditions and the staining system employed, optimal incubation should be determined by the user.</p>	
Target		
Function	<p>Although its physiological function is unclear, it can inhibit neutrophil cathepsin G and mast cell chymase, both of which can convert angiotensin-1 to the active angiotensin-2.</p>	
Tissue specificity	<p>Plasma. Synthesized in the liver. Like the related alpha-1-antitrypsin, its concentration increases in the acute phase of inflammation or infection. Found in the amyloid plaques from the hippocampus of Alzheimer disease brains.</p>	
Involvement in disease	<p>Defects in SERPINA3 may be a cause of chronic obstructive pulmonary disease (COPD) [MIM:107280].</p>	
Sequence similarities	<p>Belongs to the serpin family.</p>	
Domain	<p>The reactive center loop (RCL) extends out from the body of the protein and directs binding to the target protease. The protease cleaves the serpin at the reactive site within the RCL, establishing a covalent linkage between the carboxyl group of the serpin reactive site and the serine hydroxyl of the protease. The resulting inactive serpin-protease complex is highly stable.</p>	
Cellular localization	<p>Secreted.</p>	

Images



Immunohistochemical analysis of formalin-fixed paraffin-embedded human tonsil tissue sections, labelling α -1-Antichymotrypsin with ab921.

Immunohistochemistry (Formalin/PFA-fixed paraffin-embedded sections) - Anti-alpha 1 Antichymotrypsin antibody, prediluted (ab921)

Please note: All products are "FOR RESEARCH USE ONLY AND ARE NOT INTENDED FOR DIAGNOSTIC OR THERAPEUTIC USE"

Our Abpromise to you: Quality guaranteed and expert technical support

- Replacement or refund for products not performing as stated on the datasheet
- Valid for 12 months from date of delivery
- Response to your inquiry within 24 hours

- We provide support in Chinese, English, French, German, Japanese and Spanish
- Extensive multi-media technical resources to help you
- We investigate all quality concerns to ensure our products perform to the highest standards

If the product does not perform as described on this datasheet, we will offer a refund or replacement. For full details of the Abpromise, please visit <http://www.abcam.com/abpromise> or contact our technical team.

Terms and conditions

- Guarantee only valid for products bought direct from Abcam or one of our authorized distributors