

## Product datasheet

# Anti-alpha 1b Adrenergic Receptor antibody ab84405

★★★★☆ 1 Abreviews 1 References 3 Images

### Overview

<b>Product name</b>	Anti-alpha 1b Adrenergic Receptor antibody
<b>Description</b>	Rabbit polyclonal to alpha 1b Adrenergic Receptor
<b>Tested applications</b>	<b>Suitable for:</b> ICC/IF, WB, IHC-P
<b>Species reactivity</b>	<b>Reacts with:</b> Human
<b>Immunogen</b>	A 15 amino acid peptide from the C terminal residues of human alpha 1b Adrenergic Receptor (NM_000679; P35368).
<b>Positive control</b>	Human fetal brain lysates; human heart tissue.

### Properties

<b>Form</b>	Lyophilised: Reconstitute with 200ul distilled sterile water. Please note that if you receive this product in liquid form it has already been reconstituted as described and no further reconstitution is necessary.
<b>Storage instructions</b>	Shipped at 4°C. Upon delivery aliquot and store at -20°C. Avoid repeated freeze / thaw cycles.
<b>Storage buffer</b>	Preservative: 0.02% Sodium Azide Constituents: 1% BSA
<b>Purity</b>	Immunogen affinity purified
<b>Purification notes</b>	ab84405 is purified by a peptide affinity column.
<b>Clonality</b>	Polyclonal
<b>Isotype</b>	IgG

### Applications

Our [Abpromise guarantee](#) covers the use of **ab84405** in the following tested applications.

The application notes include recommended starting dilutions; optimal dilutions/concentrations should be determined by the end user.

Application	Abreviews	Notes
ICC/IF		Use a concentration of 1 µg/ml.

Application	Abreviews	Notes
WB		1/200 - 1/1000. Predicted molecular weight: 57 kDa. Can be blocked with <a href="#">Human alpha 1b Adrenergic Receptor peptide (ab226906)</a> .
IHC-P	★★★★☆	1/100 - 1/500.

## Target

### Function

This alpha-adrenergic receptor mediates its action by association with G proteins that activate a phosphatidylinositol-calcium second messenger system. Its effect is mediated by G(q) and G(11) proteins. Nuclear ADRA1A-ADRA1B heterooligomers regulate phenylephrine (PE)-stimulated ERK signaling in cardiac myocytes.

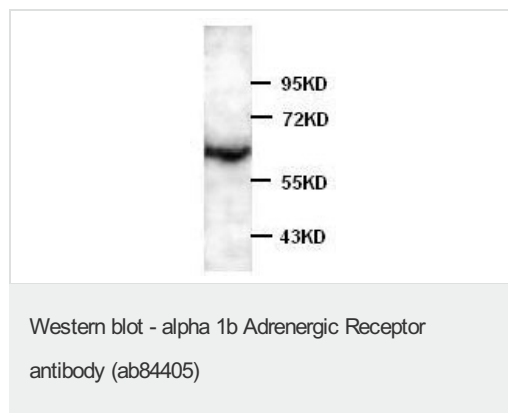
### Sequence similarities

Belongs to the G-protein coupled receptor 1 family. Adrenergic receptor subfamily. ADRA1B sub-subfamily.

### Cellular localization

Nucleus membrane. Cell membrane. Location at the nuclear membrane facilitates heterooligomerization and regulates ERK-mediated signaling in cardiac myocytes. signaling in cardiac myocytes. Colocalizes with GNAQ, PLCB1 as well as LAP2 at the nuclear membrane of cardiac myocytes.

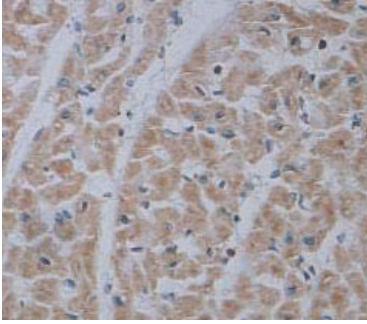
## Images



Anti-alpha 1b Adrenergic Receptor antibody (ab84405) at 1/500 dilution + human fetal brain lysates

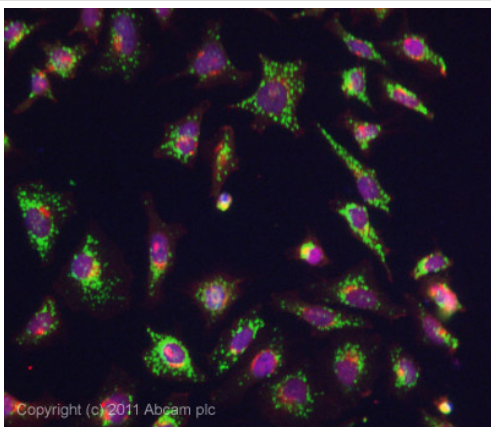
**Predicted band size** : 57 kDa

**Observed band size** : 57 kDa



Immunohistochemistry (Formalin/PFA-fixed paraffin-embedded sections) - alpha 1b Adrenergic Receptor antibody (ab84405)

ab84405, at a 1/100 dilution, staining alpha 1b Adrenergic Receptor in formalin fixed, paraffin embedded human heart tissue by Immunohistochemistry.



Immunocytochemistry/ Immunofluorescence-alpha 1b Adrenergic Receptor antibody(ab84405)

ICC/IF image of [ab84450](#) stained HeLa cells. The cells were 4% formaldehyde fixed (10 min) and then incubated in 1%BSA / 10% normal goat serum / 0.3M glycine in 0.1% PBS-Tween for 1h to permeabilise the cells and block non-specific protein-protein interactions. The cells were then incubated with the antibody ([ab84450](#), 1 µg/ml) overnight at +4°C. The secondary antibody (green) was [ab96899](#), DyLight® 488 goat anti-rabbit IgG (H+L) used at a 1/250 dilution for 1h. Alexa Fluor® 594 WGA was used to label plasma membranes (red) at a 1/200 dilution for 1h. DAPI was used to stain the cell nuclei (blue) at a concentration of 1.43µM.

**Please note:** All products are "FOR RESEARCH USE ONLY AND ARE NOT INTENDED FOR DIAGNOSTIC OR THERAPEUTIC USE"

### Our Abpromise to you: Quality guaranteed and expert technical support

- Replacement or refund for products not performing as stated on the datasheet
- Valid for 12 months from date of delivery
- Response to your inquiry within 24 hours
- We provide support in Chinese, English, French, German, Japanese and Spanish
- Extensive multi-media technical resources to help you
- We investigate all quality concerns to ensure our products perform to the highest standards

If the product does not perform as described on this datasheet, we will offer a refund or replacement. For full details of the Abpromise, please visit <http://www.abcam.com/abpromise> or contact our technical team.

## Terms and conditions

---

- Guarantee only valid for products bought direct from Abcam or one of our authorized distributors