

Product datasheet

Anti-atpF antibody ab65382

1 Image

Overview

<b>Product name</b>	Anti-atpF antibody
<b>Description</b>	Rabbit polyclonal to atpF
<b>Host species</b>	Rabbit
<b>Specificity</b>	ab65382 is specific for AtpF subunit of ATP synthase.
<b>Tested applications</b>	<b>Suitable for:</b> WB
<b>Species reactivity</b>	<b>Reacts with:</b> Arabidopsis thaliana, Plants, Chlamydomonas reinhardtii
<b>Immunogen</b>	Full length protein: atpF subunit of the chloroplast ATP synthase complex extracted from Arabidopsis thaliana.
<b>Positive control</b>	Arabidopsis and spinach chloroplast proteins.

Properties

<b>Form</b>	Liquid
<b>Storage instructions</b>	Shipped at 4°C. Upon delivery aliquot and store at -20°C. Avoid freeze / thaw cycles.
<b>Storage buffer</b>	Preservative: 0.01% Sodium Azide
<b>Purity</b>	Whole antiserum
<b>Clonality</b>	Polyclonal
<b>Isotype</b>	IgG

Applications

Our [Abpromise guarantee](#) covers the use of **ab65382** in the following tested applications.

The application notes include recommended starting dilutions; optimal dilutions/concentrations should be determined by the end user.

Application	Abreviews	Notes
WB		1/5000. Detects a band of approximately 21 kDa (predicted molecular weight: 21 kDa).

Target

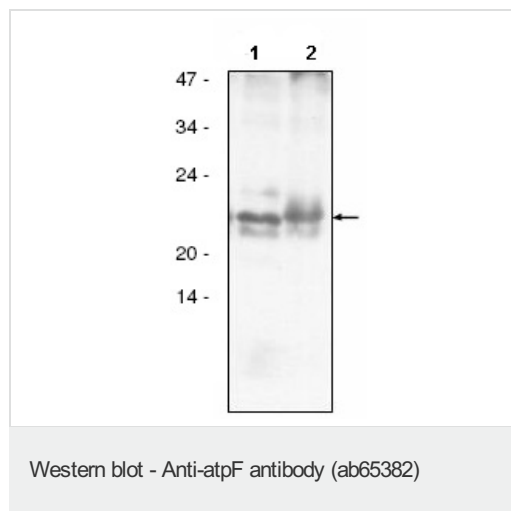
## Relevance

atpF belongs to the family of F1-type ATPases, which are also present in bacteria and mitochondria. ATP synthase generates ATP from ADP and inorganic phosphate using energy derived from a trans-thylakoidal electrochemical proton gradient. The transmembrane atpF subunit belongs to a stator part of ATP synthase.

## Cellular localization

Plastid, chloroplast thylakoid membrane; Single-pass membrane protein.

## Images



**All lanes :** Anti-atpF antibody (ab65382) at 1/5000 dilution

**Lane 1 :** Arabidopsis chloroplast proteins

**Lane 2 :** spinach chloroplast proteins

Lysates/proteins at 5 µg per lane.

Developed using the ECL technique.

**Predicted band size:** 21 kDa

**Observed band size:** 21 kDa

**Please note:** All products are "FOR RESEARCH USE ONLY AND ARE NOT INTENDED FOR DIAGNOSTIC OR THERAPEUTIC USE"

## Our Abpromise to you: Quality guaranteed and expert technical support

- Replacement or refund for products not performing as stated on the datasheet
- Valid for 12 months from date of delivery
- Response to your inquiry within 24 hours
- We provide support in Chinese, English, French, German, Japanese and Spanish
- Extensive multi-media technical resources to help you
- We investigate all quality concerns to ensure our products perform to the highest standards

If the product does not perform as described on this datasheet, we will offer a refund or replacement. For full details of the Abpromise, please visit <http://www.abcam.com/abpromise> or contact our technical team.

## Terms and conditions

- Guarantee only valid for products bought direct from Abcam or one of our authorized distributors