

Product datasheet

Anti-beta Galactosidase antibody ab616

★★★★☆ 30 Abreviews 92 References 2 Images

Overview

Product name	Anti-beta Galactosidase antibody
Description	Rabbit polyclonal to beta Galactosidase
Tested applications	Suitable for: ELISA, WB, IP Unsuitable for: ICC/IF, IHC-FoFr, IHC-Fr or IHC-P
Species reactivity	Reacts with: Escherichia coli
Immunogen	Recombinant full length protein (E. coli).
Positive control	1.0µg of <i>E.coli</i> in a standard sandwich ELISA. Assay by immunoelectrophoresis resulted in a single precipitin arc against purified and partially purified <i>E.coli</i> beta-galactosidase.
General notes	Application Note: This antibody shows inconsistent results between batches in ICC/IF, IF, IHC-P, IHC-Fr and IHC-FoFr. We have received several good Abreviews on these applications, however, we are unable to guarantee positive results. If the antibody is used for IHC, please try fixing with methanol and block with gelatine instead with BSA or NGS. After each antibody incubation, please wash 5x with TBS instead of PBS. We would recommend ab4761 or ab12081 as alternatives.

Properties

Form	Liquid
Storage instructions	Shipped at 4°C. Store at +4°C short term (1-2 weeks). Upon delivery aliquot. Store at -20°C or -80°C. Avoid freeze / thaw cycle.
Storage buffer	Preservative: 0.01% Sodium Azide Constituents: 1% BSA, 0.15M Sodium chloride, 0.02M Potassium phosphate, pH 7.2
Purity	IgG fraction
Purification notes	IgG fraction purified from monospecific antiserum by a multi-step process of delipidation, salt fractionation, ion exchange chromatography and dialysis.
Clonality	Polyclonal
Isotype	IgG

Applications

Our [Abpromise guarantee](#) covers the use of **ab616** in the following tested applications.

The application notes include recommended starting dilutions; optimal dilutions/concentrations should be determined by the end user.

Application	Abreviews	Notes
ELISA		1/10000. sELISA tested against 1ug E.coli beta galactosidase.
WB	★★★★★	1/5000 - 1/10000. Detects a band of approximately 116 kDa. This antibody shows inconsistent results between batches in ICC/IF, IHC-P, IHC-Fr and IHC-FoFr. We have received several good Abreviews on these applications, however, we are unable to guarantee positive results. If the antibody is used for IHC, please try fixing with methanol and block with gelatine instead with BSA or NGS. After each antibody incubation, please wash 5x with TBS instead of PBS. We would recommend ab4761 or ab12081 as alternatives.
IP		1/500 - 1/5000.

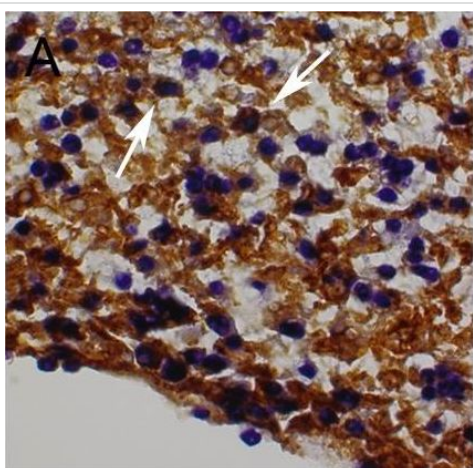
Application notes Is unsuitable for ICC/IF, IHC-FoFr, IHC-Fr or IHC-P.

Target

Relevance Beta galactosidase is coded by a gene (lac z) in the lac operon of Escherichia coli. It is a metalloenzyme that splits lactose into glucose and galactose. It hydrolyzes terminal, non-reducing beta-D-galactose residues in beta-D-galactosides. Activation by cations seems to be substrate dependent. K⁺, Na⁺, NH₄⁺, Rb⁺, Cs⁺ and Mn⁺⁺ all activate enzyme activity based upon the substrate used.

Cellular localization Cytoplasmic

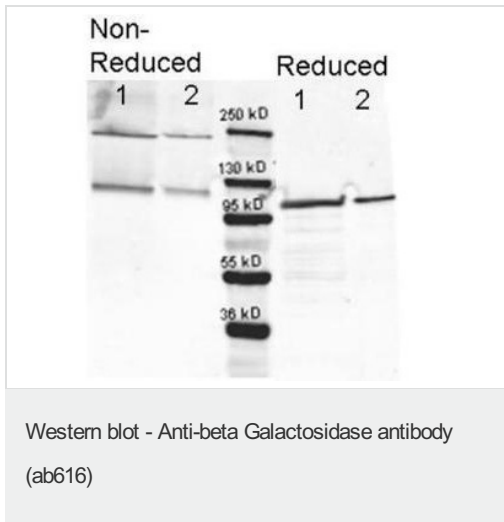
Images



Immunostaining of beta galactosidase (brown) in paraffin embedded, 4% PFA fixed, mouse brain (SVZ, A_L8 mice) using ab616. Olig2 is stained in blue. Heat mediated antigen retrieval in Tris buffer (pH 8.0) was carried out and then beta galactosidase was visualised using a HRP based DAB staining kit.

Immunohistochemistry (Formalin/PFA-fixed paraffin-embedded sections) - Anti-beta Galactosidase antibody (ab616)

Image from Nazarenko I et al., PLoS One. 2011;6(4):e18303. Fig 9.; doi: 10.1371/journal.pone.0018303



Western blotting using ab616. Lane 1 shows 80 ng and lane 2 shows 20 ng loaded onto gel. Results for non-reducing conditions of SDS-PAGE prior to transfer to nitrocellulose are shown on the left side of the figure; results obtained under reducing conditions are shown on the right. The membrane was probed with ab616 at 1/10,000 dilution.

Please note: All products are "FOR RESEARCH USE ONLY AND ARE NOT INTENDED FOR DIAGNOSTIC OR THERAPEUTIC USE"

Our Abpromise to you: Quality guaranteed and expert technical support

- Replacement or refund for products not performing as stated on the datasheet
- Valid for 12 months from date of delivery
- Response to your inquiry within 24 hours
- We provide support in Chinese, English, French, German, Japanese and Spanish
- Extensive multi-media technical resources to help you
- We investigate all quality concerns to ensure our products perform to the highest standards

If the product does not perform as described on this datasheet, we will offer a refund or replacement. For full details of the Abpromise, please visit <http://www.abcam.com/abpromise> or contact our technical team.

Terms and conditions

- Guarantee only valid for products bought direct from Abcam or one of our authorized distributors