


Product datasheet

Anti-gamma Tubulin antibody ab93867

1 Image

Overview

Product name	Anti-gamma Tubulin antibody
Description	Rabbit polyclonal to gamma Tubulin
Host species	Rabbit
Tested applications	Suitable for: IP Unsuitable for: WB
Species reactivity	Reacts with: Human Predicted to work with: Mouse, Rat, Rabbit, Horse, Guinea pig, Cow, Dog, Pig, Xenopus laevis, Chimpanzee, Zebrafish, Rhesus monkey, Gorilla, Orangutan, Xenopus tropicalis 
Immunogen	Synthetic peptide from within residues: GSYLLERLND RYPKKLQTY SVFPNQDEMS DVVVQPYNSL LTLKRLTQNA D, corresponding to amino acids 150-200 of Human gamma Tubulin using the numbering given in entry NP_001061.2. Run BLAST with ExPASy Run BLAST with NCBI
Positive control	HeLa whole cell lysate

Properties

Form	Liquid
Storage instructions	Shipped at 4°C. Upon delivery aliquot and store at -20°C. Avoid freeze / thaw cycles.
Storage buffer	Preservative: 0.09% Sodium Azide Constituents: Tris citrate/phosphate, pH 7-8
Purity	Immunogen affinity purified
Clonality	Polyclonal
Isotype	IgG

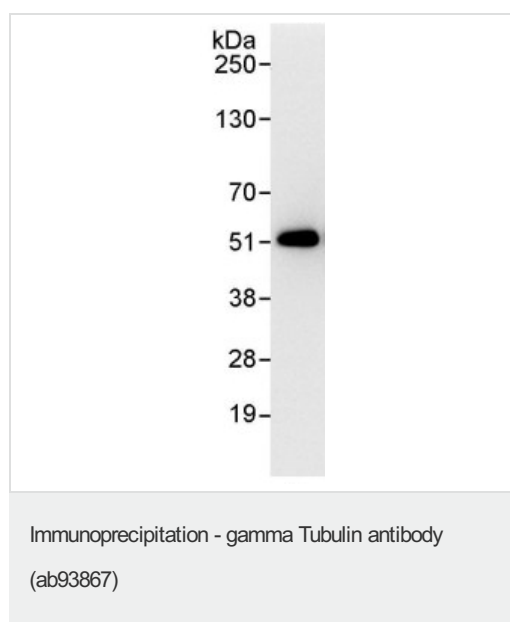
Applications

Our [Abpromise guarantee](#) covers the use of **ab93867** in the following tested applications.

The application notes include recommended starting dilutions; optimal dilutions/concentrations should be determined by the end user.

Application	Abreviews	Notes
IP		Use at 2-5 µg/mg of lysate.
Application notes	Is unsuitable for WB.	
Target		
Function	Tubulin is the major constituent of microtubules. Gamma tubulin is found at microtubule organizing centers (MTOC) such as the spindle poles or the centrosome. Pericentriolar matrix component that regulates alpha/beta tubulin minus-end nucleation, centrosome duplication and spindle formation.	
Sequence similarities	Belongs to the tubulin family.	
Post-translational modifications	Phosphorylation at Ser-131 by BRSK1 regulates centrosome duplication, possibly by mediating relocation of gamma-tubulin and its associated proteins from the cytoplasm to the centrosome.	
Cellular localization	Cytoplasm > cytoskeleton > centrosome.	

Images



3µg ab93867 were used to immunoprecipitate gamma Tubulin from 3µg HeLa whole cell lysate. 20% IP was loaded on the gel and probed with a different anti-gamma Tubulin antibody.

Detection: Chemiluminescence with an exposure time of 3 seconds.

Please note: All products are "FOR RESEARCH USE ONLY AND ARE NOT INTENDED FOR DIAGNOSTIC OR THERAPEUTIC USE"

Our Promise to you: Quality guaranteed and expert technical support

- Replacement or refund for products not performing as stated on the datasheet
- Valid for 12 months from date of delivery
- Response to your inquiry within 24 hours
- We provide support in Chinese, English, French, German, Japanese and Spanish
- Extensive multi-media technical resources to help you

- We investigate all quality concerns to ensure our products perform to the highest standards

If the product does not perform as described on this datasheet, we will offer a refund or replacement. For full details of the Abpromise, please visit <http://www.abcam.com/abpromise> or contact our technical team.

Terms and conditions

- Guarantee only valid for products bought direct from Abcam or one of our authorized distributors