

Product datasheet

Anti-groES antibody ab69823

2 References 1 Image

Overview

Product name	Anti-groES antibody
Description	Rabbit polyclonal to groES
Host species	Rabbit
Tested applications	Suitable for: WB, IP
Species reactivity	Reacts with: Escherichia coli
Immunogen	Full length GroES purified chromatographically from an E. coli strain overexpressing the protein.

Properties

Form	Liquid
Storage instructions	Shipped at 4°C. Upon delivery aliquot and store at -20°C or -80°C. Avoid repeated freeze / thaw cycles.
Storage buffer	Preservative: None Constituents: Whole serum
Purity	Whole antiserum
Clonality	Polyclonal
Isotype	IgG

Applications

Our [Abpromise guarantee](#) covers the use of **ab69823** in the following tested applications.

The application notes include recommended starting dilutions; optimal dilutions/concentrations should be determined by the end user.

Application	Abreviews	Notes
WB		1/5000. Detects a band of approximately 10 kDa (predicted molecular weight: 10 kDa). for colorimetric detection. 1/500 for ECL.
IP		1/200.

Target

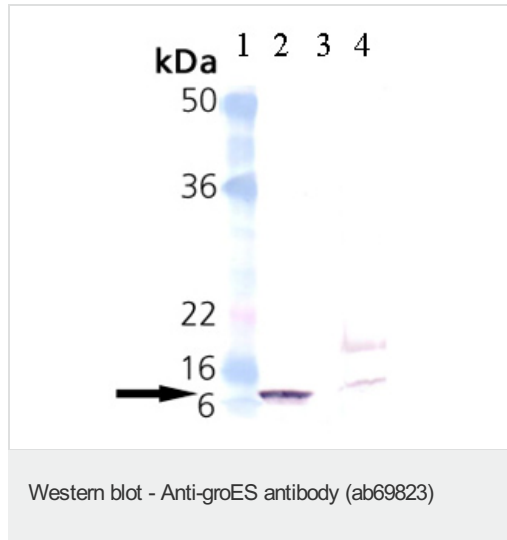
Relevance

GroEL and GroES are E.coli chaperones, which are homologs of the mitochondrial chaperones Hsp60 and Hsp10 respectively. GroEL is a double toroidal assembly of 14 identical subunits which form two heptameric rings stacked back-to-back, with a cavity at each end. GroEL and its co-chaperonin GroES facilitate protein folding in an ATP-dependent mechanism. Binding of substrate protein, in addition to binding of ATP, induces a conformational change that allows association of this binary complex with a separate lid structure, GroES.

Cellular localization

Cytoplasmic

Images



All lanes : Anti-groES antibody (ab69823) at 1/5000 dilution

Lane 1 : Molecular weight marker

Lane 2 : groES recombinant E. coli protein

Lane 3 : No lysates (empty)

Lane 4 : Lysates prepared from E.coli

Predicted band size: 10 kDa

Please note: All products are "FOR RESEARCH USE ONLY AND ARE NOT INTENDED FOR DIAGNOSTIC OR THERAPEUTIC USE"

Our Abpromise to you: Quality guaranteed and expert technical support

- Replacement or refund for products not performing as stated on the datasheet
- Valid for 12 months from date of delivery
- Response to your inquiry within 24 hours
- We provide support in Chinese, English, French, German, Japanese and Spanish
- Extensive multi-media technical resources to help you
- We investigate all quality concerns to ensure our products perform to the highest standards

If the product does not perform as described on this datasheet, we will offer a refund or replacement. For full details of the Abpromise, please visit <http://www.abcam.com/abpromise> or contact our technical team.

Terms and conditions

- Guarantee only valid for products bought direct from Abcam or one of our authorized distributors