

Product datasheet

Mouse Atherosclerosis Antibody Array - Membrane (22 targets) ab169807

1 Image

Overview

Product name	Mouse Atherosclerosis Antibody Array - Membrane (22 targets)
Sample type	Cell culture supernatant, Saliva, Milk, Urine, Serum, Plasma, Cell culture extracts, Other biological fluids, Whole Blood, Tissue Extracts, Cell Lysate, Cell culture media
Assay type	Semi-quantitative
Species reactivity	Reacts with: Mouse
Product overview	<p>ab169807 detects 22 Mouse Atherosclerotic Factors in 4 or 8 samples. Suitable for all liquid sample types.</p> <p>Targets: bFGF, CD40, Eotaxin-1, G-CSF, GM-CSF, IFN-gamma, IL-1 alpha, IL-1 beta, IL-2, IL-3, IL-4, IL-5, IL-6, IL-13, L-Selectin, MCP-1, M-CSF, MIP-3 alpha, P-Selectin, RANTES, TNF alpha, VEGF-A</p> <p><u>Learn more about membrane antibody arrays</u></p>
Notes	<p>Abcam has not and does not intend to apply for the REACH Authorisation of customers' uses of products that contain European Authorisation list (Annex XIV) substances.</p> <p>It is the responsibility of our customers to check the necessity of application of REACH Authorisation, and any other relevant authorisations, for their intended uses.</p>
Tested applications	Suitable for: Multiplex Protein Detection

Properties

Storage instructions Store at -20°C. Please refer to protocols.

Components	1 x 4 Membranes	1 x 8 Membranes
1,000X HRP-Conjugated Streptavidin	1 x 50µl	1 x 50µl
1X Blocking Buffer	1 x 25ml	2 x 25ml
2000X Biotin-Conjugated Anti Cytokines	2 vials	4 vials
20X Wash Buffer I	1 x 10ml	1 x 20ml

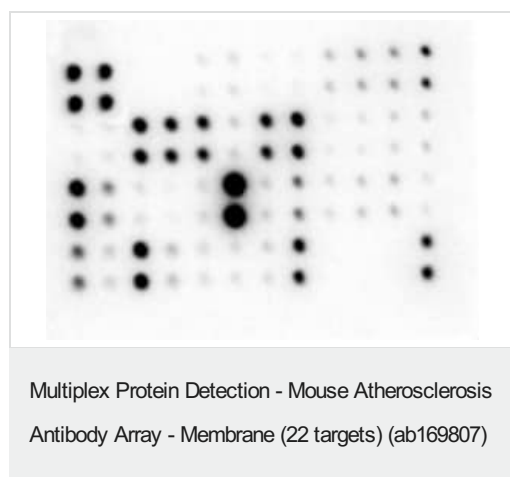
Components	1 x 4 Membranes	1 x 8 Membranes
20X Wash Buffer II	1 x 10ml	1 x 20ml
2X Cell Lysis Buffer	1 x 10ml	1 x 16ml
8-Well Incubation Tray (with Lid)	1 unit	1 unit
Atherosclerosis Antibody Array Membranes	1 unit	1 unit
Detection Buffer C	1 x 1.5ml	1 x 2.5ml
Detection Buffer D	1 x 1.5ml	1 x 2.5ml

Applications

The Abpromise guarantee Our **Abpromise guarantee** covers the use of ab169807 in the following tested applications. The application notes include recommended starting dilutions; optimal dilutions/concentrations should be determined by the end user.

Application	Abreviews	Notes
Multiplex Protein Detection		Use at an assay dependent concentration.

Images



Typical images obtained with Abcam Mouse Cytokine Antibody Array. These membranes were probed with conditioned media from two different cell lines. Membranes were exposed to film at room temperature for 1 minute.

Please note: All products are "FOR RESEARCH USE ONLY. NOT FOR USE IN DIAGNOSTIC PROCEDURES"

Our Abpromise to you: Quality guaranteed and expert technical support

- Replacement or refund for products not performing as stated on the datasheet
- Valid for 12 months from date of delivery
- Response to your inquiry within 24 hours

- We provide support in Chinese, English, French, German, Japanese and Spanish
- Extensive multi-media technical resources to help you
- We investigate all quality concerns to ensure our products perform to the highest standards

If the product does not perform as described on this datasheet, we will offer a refund or replacement. For full details of the Abpromise, please visit <https://www.abcam.com/abpromise> or contact our technical team.

Terms and conditions

- Guarantee only valid for products bought direct from Abcam or one of our authorized distributors