

# Aggresome Detection Kit ab139486

★★★★★ [1 Abreviews](#) [3 References](#) [3 Images](#)

### Overview

<b>Product name</b>	Aggresome Detection Kit
<b>Detection method</b>	Fluorescent
<b>Sample type</b>	Adherent cells, Suspension cells
<b>Assay type</b>	Cell-based
<b>Product overview</b>	<p>Abcam's Aggresome Detection kit (ab139486) provides a rapid, specific and quantitative approach to identify inhibitors relevant to neurodegenerative disease in an authentic cellular context. This fixed-cell assay doesn't require non-physiological protein mutations or genetically engineered cell lines. The Aggresome Detection Reagent has been validated under a wide range of conditions and with small molecule modulators, demonstrating suitability for screening compounds of potential therapeutic value, and optimized for antibody co-localization studies to identify interactions between aggregated protein cargo and the various proteins implicated in autophagy and aggresome formation. Suggested uses for this kit include:</p> <ol style="list-style-type: none"><li>1. The identification of small molecules that inhibit aggresome formation.</li><li>2. Immuno-localization studies between aggregated protein cargo and the various proteins implicated in aggresome formation, such as histone deacetylase 6, parkin, ataxin-3, dynein motor complex and ubiquilin-1.</li></ol>
<b>Platform</b>	Flow cytometer, Fluorescence microscope

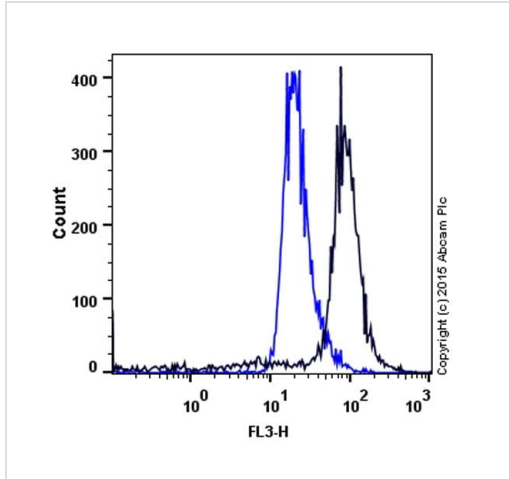
### Properties

**Storage instructions** Please refer to protocols.

Components	100 tests
10X Assay Buffer	1 x 25ml
Aggresome Detection Reagent	1 x 10µl
Hoechst 33342 Nuclear Stain	1 x 50µl

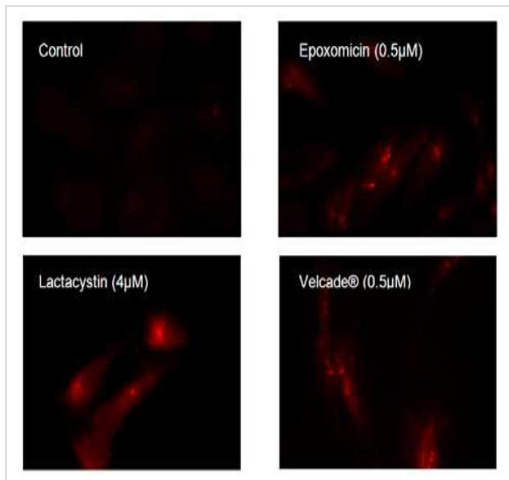
Components	100 tests
Proteasome Inhibitor	1 vial

**Images**



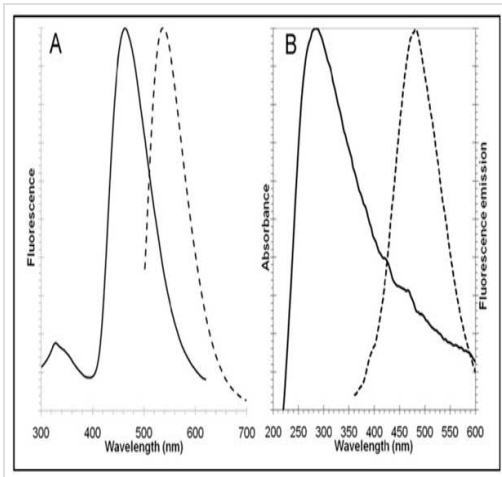
Aggresome Detection Kit (ab139486)

The increase in the fluorescence intensity of the Aggresome Detection Reagent with the addition of MG-132 in Jurkat cells. Jurkat cells were mock induced with 0.08% DMSO (blue line) or induced with 8 μM MG-132 (black line) in a 37°C, 5% CO<sub>2</sub> incubator for 24 hours.



Aggresomes detected by Aggresome Detection Reagent in HeLa cells.

Aggresomes were detected in HeLa cells after overnight incubation with a range of proteasome inhibitors, as observed by fluorescence microscopy.



Excitation and fluorescence emission spectra for Aggresome reagent dye, Ex/Em=500/600 nm (panel A, left) and Hoechst 33342, Ex/Em=350/461 nm (panel B, right). All spectra were determined in 1X Assay Buffer.

Excitation and fluorescence emission spectra for Aggresome Detection Reagent and Hoechst 33342

**Please note:** All products are "FOR RESEARCH USE ONLY. NOT FOR USE IN DIAGNOSTIC PROCEDURES"

### Our Abpromise to you: Quality guaranteed and expert technical support

- Replacement or refund for products not performing as stated on the datasheet
- Valid for 12 months from date of delivery
- Response to your inquiry within 24 hours
- We provide support in Chinese, English, French, German, Japanese and Spanish
- Extensive multi-media technical resources to help you
- We investigate all quality concerns to ensure our products perform to the highest standards

If the product does not perform as described on this datasheet, we will offer a refund or replacement. For full details of the Abpromise, please visit <https://www.abcam.com/abpromise> or contact our technical team.

### Terms and conditions

- Guarantee only valid for products bought direct from Abcam or one of our authorized distributors