

## Product datasheet

# BrdU Immunohistochemistry Kit ab125306

★★★★★ [2 Abreviews](#) [21 References](#) [2 Images](#)

### Overview

**Product name** BrdU Immunohistochemistry Kit

**Sample type** Tissue, Adherent cells, Suspension cells

**Product overview** ab125306 is a histochemical staining kit for the detection and localization of bromodeoxyuridine incorporated into newly synthesized DNA of actively proliferating cells.

The material in ab125306 is sufficient to run **50 slides**. The average test area is defined as a circle around the tissue with an approximate diameter of 2 centimeters.

**Control Slides:** BrdU labeled MCF7 (human breast carcinoma derived) cells grown on glass slides ([ab281335](#)).

**Notes** \*Trypsin is only required if using formalin fixed tissues. If the tissues are fixed in alcohol, trypsin digestion is not required. Please note that a quenching solution (hydrogen peroxide (30% solution) is not provided in this kit.

**Tested applications** **Suitable for:** IHC-Fr, IHC-P

### Properties

**Storage instructions** Store at -20°C. Please refer to protocols.

Components	1 kit
4X Trypsin Enzyme Concentrate	1 x 3ml
Blocking Buffer	1 x 6ml
Control Slides (stained)	1 slide
Control Slides (unstained)	4 slides

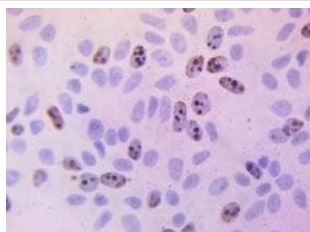
Components	1 kit
DAB Solution 1 (DAB Concentrate)	1 x 0.3ml
DAB Solution 2 (Substrate Reaction Buffer)	1 x 6ml
Denaturing Solution	1 x 6ml
Detector Antibody (Biotinylated and pre-diluted)	1 x 6ml
Hematoxylin Counterstain	1 x 6ml
Mounting Media	1 x 6ml
Streptavidin-HRP Conjugate (pre-diluted)	1 x 6ml
Trypsin Dilution Buffer	1 x 12ml

## Applications

**The Abpromise guarantee** Our **Abpromise guarantee** covers the use of ab125306 in the following tested applications. The application notes include recommended starting dilutions; optimal dilutions/concentrations should be determined by the end user.

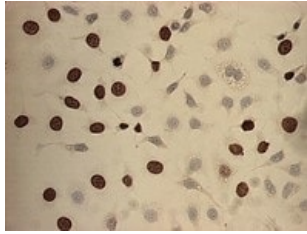
Application	Abreviews	Notes
IHC-Fr		Use at an assay dependent concentration.
IHC-P		Use at an assay dependent concentration.

## Images



BrdU Immunohistochemistry Kit (ab125306)

Formalin-fixed, paraffin embedded MCF7 cells sections stained using ab125306. More diffuse nuclear immunostaining can be seen [here](#).



BrdU Immunohistochemistry Kit (ab125306)

Formalin-fixed, paraffin embedded MCF7 cells sections stained using ab125306. A more localized nuclear staining reaction can be seen here.

**Please note:** All products are "FOR RESEARCH USE ONLY. NOT FOR USE IN DIAGNOSTIC PROCEDURES"

### Our Abpromise to you: Quality guaranteed and expert technical support

---

- Replacement or refund for products not performing as stated on the datasheet
- Valid for 12 months from date of delivery
- Response to your inquiry within 24 hours
- We provide support in Chinese, English, French, German, Japanese and Spanish
- Extensive multi-media technical resources to help you
- We investigate all quality concerns to ensure our products perform to the highest standards

If the product does not perform as described on this datasheet, we will offer a refund or replacement. For full details of the Abpromise, please visit <https://www.abcam.com/abpromise> or contact our technical team.

### Terms and conditions

---

- Guarantee only valid for products bought direct from Abcam or one of our authorized distributors