

Cellular Superoxide Detection Assay Kit ab139477

1 Image

Overview

| | |
|------------------|--|
| Product name | Cellular Superoxide Detection Assay Kit |
| Sample type | Adherent cells, Suspension cells |
| Assay type | Cell-based |
| Product overview | Cellular Superoxide Detection Assay Kit (ab139477) is designed to directly monitor real time superoxide production in live cells using fluorescence microscopy and/or flow cytometry. A major component of the kit, Superoxide Detection Reagent (Orange), is a cell-permeable probe that reacts specifically with superoxide, generating an orange fluorescent product. The kit is not designed to detect reactive peroxide, hydroxyl, peroxynitrite, chlorine or bromine species, as the fluorescent probe included is relatively insensitive to these analytes. Upon staining, the fluorescent product generated can be visualized using a wide-field fluorescence microscope equipped with standard orange (e.g. 550/620 nm) or red (e.g. 650/670 nm) fluorescent cubes, or cytometrically using any flow cytometer equipped with a blue (488 nm) laser. |

The Cellular Superoxide Detection Assay kit contains sufficient reagents for at least 200 microscopy assays or 50 flow cytometry assays using live cells (adherent or in suspension).

| | |
|-------|---|
| Notes | <p>Related products</p> <p>Review the oxidative stress marker and assay guide, or the full metabolism assay guide to learn about more assays for metabolites, metabolic enzymes, mitochondrial function, and oxidative stress, and also how to assay metabolic function in live cells using your plate reader.</p> |
|-------|---|

| | |
|----------|---|
| Platform | Flow cytometer, Fluorescence microscope |
|----------|---|

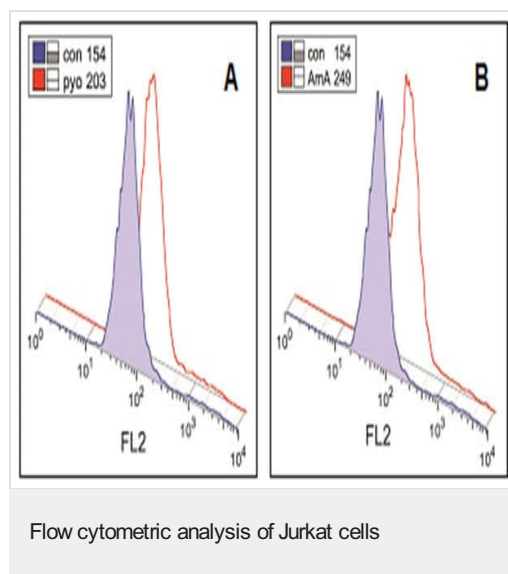
Properties

| | |
|----------------------|----------------------------|
| Storage instructions | Please refer to protocols. |
|----------------------|----------------------------|

| Components | 1 kit |
|---------------------------------------|--------------|
| ROS Inducer (Pyocyanin 1 μmole) | 1 vial |
| ROS Inhibitor (N-acetyl-L-cysteine) | 2 x 10mg |
| Superoxide Detection Reagent (Orange) | 1 x 300nmole |
| | |

| Components | 1 kit |
|-------------------|--------|
| Wash Buffer Salts | 1 pack |

Images



Cellular Superoxide Detection Assay Kit (ab139477) Jurkat cells were induced with 100 μ M pyocyanin (general ROS inducer, panel A), or 200 μ M antimycin A (superoxide inducer, panel B), stained with Superoxide Detection Reagent (Orange) and analyzed using flow cytometry. Untreated cells (tinted profile) were used as a control. Cell debris were ungated. The numbers within the inserts reflect the mean orange fluorescence of the cells treated and control samples.

Please note: All products are "FOR RESEARCH USE ONLY. NOT FOR USE IN DIAGNOSTIC PROCEDURES"

Our Abpromise to you: Quality guaranteed and expert technical support

- Replacement or refund for products not performing as stated on the datasheet
- Valid for 12 months from date of delivery
- Response to your inquiry within 24 hours
- We provide support in Chinese, English, French, German, Japanese and Spanish
- Extensive multi-media technical resources to help you
- We investigate all quality concerns to ensure our products perform to the highest standards

If the product does not perform as described on this datasheet, we will offer a refund or replacement. For full details of the Abpromise, please visit <https://www.abcam.com/abpromise> or contact our technical team.

Terms and conditions

- Guarantee only valid for products bought direct from Abcam or one of our authorized distributors