

Congo Red Stain Kit (Amyloid Stain) ab150663

2 References 2 Images

Overview

Product name	Congo Red Stain Kit (Amyloid Stain)
Sample type	Tissue sections
Product overview	The Congo Red Stain Kit / Amyloid Stain Kit is intended for use in the histological visualization of amyloid in tissue sections. Examination under a polarizing microscope results in green birefringence of amyloid.

Other products for staining tissue sections

Find more kits and reagents in the [special stains guide](#), or products for antigen retrieval, blocking, signal amplification, visualization, counterstaining, and mounting in the [IHC kits and reagents guide](#).

Notes

Staining Interpretation

Amyloid	Red to Pink
Erythorcytes	Light Orange
Eosdinophil Granules	Orange to Red
Nuclei	Blue

Control Tissue

Freshly cut sections containing amyloid.  
Cut sections 6-12 microns to show smaller amyloid deposits.

Properties

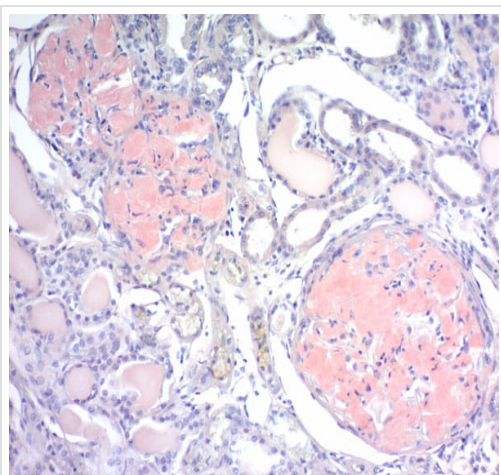
Storage instructions	Store at room temperature. Please refer to protocols.
----------------------	---

Components	100 tests
Bluing Reagent	1 x 500ml
Congo Red Solution	1 x 500ml

Components	100 tests
Hematoxylin (Modified Mayer's Solution)	1 x 500ml

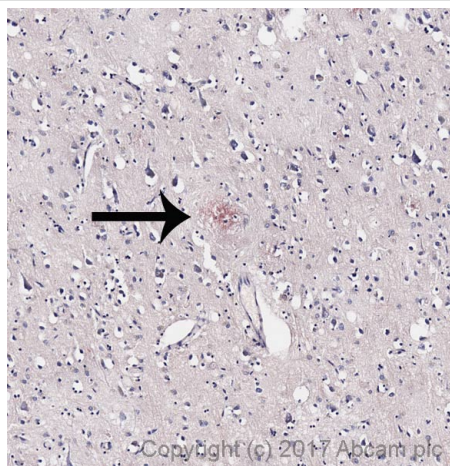
**Relevance** Amyloid beta peptide precipitates as amyloid plaques in the brain of patients with Alzheimer's disease. The plaque related peptides are 40-43 aminoacid residues in length.

## Images



ab150663 Congo Red Stain Kit (Amyloid Stain) staining formalin-fixed-paraffin embedded human amyloid.

ab150663 - Congo Red Stain Kit (Amyloid Stain)



ab150663 (Amyloid Stain) staining amyloid (red, black arrow)) in formalin fixed paraffin embedded human Alzheimer's brain.

\*Tissue obtained from the Human Research Tissue Bank, supported by the NIHR Cambridge Biomedical Research Centre.

ab150663 - Congo Red Stain Kit (Amyloid Stain)

**Please note:** All products are "FOR RESEARCH USE ONLY. NOT FOR USE IN DIAGNOSTIC PROCEDURES"

## Our Abpromise to you: Quality guaranteed and expert technical support

- Replacement or refund for products not performing as stated on the datasheet
- Valid for 12 months from date of delivery

- Response to your inquiry within 24 hours
- We provide support in Chinese, English, French, German, Japanese and Spanish
- Extensive multi-media technical resources to help you
- We investigate all quality concerns to ensure our products perform to the highest standards

If the product does not perform as described on this datasheet, we will offer a refund or replacement. For full details of the Abpromise, please visit <https://www.abcam.com/abpromise> or contact our technical team.

#### **Terms and conditions**

---

- Guarantee only valid for products bought direct from Abcam or one of our authorized distributors