

Giemsa Stain Kit ab150670

10 References 3 Images

Overview

Product name	Giemsa Stain Kit
Sample type	Tissue sections
Product overview	Giemsa Stain Kit (May-Grunwald) ab150670 is intended for use in the visualization of cells present in hematopoietic tissues and certain microorganisms. This kit may be used on formalin-fixed, paraffin-embedded or frozen sections.

- Giemsa staining protocol summary:
- deparaffinize sections if necessary and rehydrate
  - incubate with May-Grunwald solution for 5-7 min
  - wash with PBS
  - incubate with Giemsa solution for 10-15 min
  - wash with PBS, and incubate in PBS for 5 min
  - rinse with water and air dry
  - clear with Xylene or similar, and mount

Other products for staining tissue sections

Find more kits and reagents in the [special stains guide](#), or products for antigen retrieval, blocking, signal amplification, visualization, counterstaining, and mounting in the [IHC kits and reagents guide](#).

Notes

Staining Interpretation

Nuclei	Blue/Violet
Cytoplasm	Light Blue
Collagen	Pale Pink
Muscle Fibre	Pale Pink
Erythrocytes	Gray, Yellow or Pink
Rickettsia	Reddish-Purple

<i>Helicobacter Pylori</i>	Blue
Mast Cells	Dark Blue with Red Granules

**Control Tissue:** Blood Film. Any well fixed tissue.

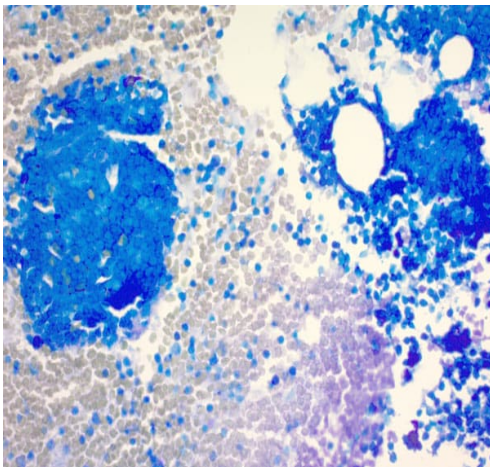
## Properties

### Storage instructions

Store at room temperature. Please refer to protocols.

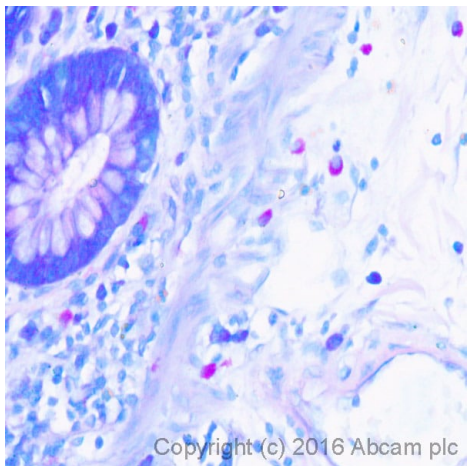
Components	100 tests
Giemsa Stock Solution	1 x 500ml
May Grunwald Stock Solution	1 x 500ml
Phosphate Buffer solution (pH6.8)	1 x 500ml

## Images



ab150670 Giemsa Stain Kit staining formalin-fixed-paraffin embedded human bone marrow.

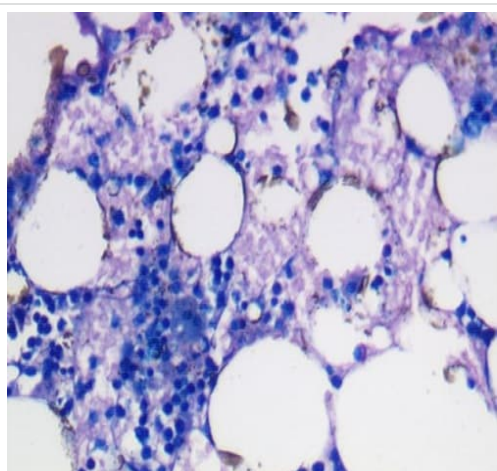
ab150670 - Giemsa Stain Kit



ab150670 - Giemsa Stain Kit

ab150670 (Giemsa stain) staining mast cells (deep pink) in formalin fixed paraffin embedded normal human colon.

\*Tissue obtained from the Human Research Tissue Bank, supported by the NIHR Cambridge Biomedical Research Centre.



ab150670 - Giemsa Stain Kit

Staining using ab150670 - Giemsa Stain Kit (May-Grunwald).

**Please note:** All products are "FOR RESEARCH USE ONLY. NOT FOR USE IN DIAGNOSTIC PROCEDURES"

### Our Abpromise to you: Quality guaranteed and expert technical support

- Replacement or refund for products not performing as stated on the datasheet
- Valid for 12 months from date of delivery
- Response to your inquiry within 24 hours
- We provide support in Chinese, English, French, German, Japanese and Spanish
- Extensive multi-media technical resources to help you
- We investigate all quality concerns to ensure our products perform to the highest standards

If the product does not perform as described on this datasheet, we will offer a refund or replacement. For full details of the Abpromise, please visit <https://www.abcam.com/abpromise> or contact our technical team.

### Terms and conditions

- Guarantee only valid for products bought direct from Abcam or one of our authorized distributors