

## Product datasheet

# Luxol Fast Blue Stain Kit (Myelin Stain) ab150675

★★★★★ [3 Abreviews](#) [21 References](#) [3 Images](#)

### Overview

**Product name** Luxol Fast Blue Stain Kit (Myelin Stain)

**Product overview** Luxol Fast Blue Stain Kit (Myelin Stain) ab150675 is designed for staining myelin/myelinated axons and Nissl bodies on formalin fixed, paraffin-embedded tissue as well as frozen tissue. This product is used for identifying the basic neuronal structure in brain or spinal cord sections.

Luxol Fast Blue staining protocol summary:

- deparaffinize sections if necessary and hydrate in water
- incubate in Luxol Fast Blue solution for 24 hr at room temp, or 2 hr at 60°C
- rinse in water
- differentiate by dipping in lithium carbonate solution
- differentiate further by dipping in alcohol reagent
- rinse in water
- incubate in Cresyl Echt Violet for 2-5 min
- rinse in water
- dehydrate in absolute alcohol
- clear and mount

### Other products for staining tissue sections

Find more kits and reagents in the [special stains guide](#), or products for antigen retrieval, blocking, signal amplification, visualization, counterstaining, and mounting in the [IHC kits and reagents guide](#).

### Notes

#### Staining Interpretation

Myelinated Fibers	Blue
Nissil Substance	Violet
Nerve Cells	Violet

**Control Tissue:** Cerebral Cortex, Spinal Cord.

## Properties

Components	100 tests
Alcohol reagent (70%)	1 x 500ml
Cresyl Echt Violet Solution	1 x 125ml
Lithium Carbonate Solution	1 x 500ml
Luxol Fast Blue Solution	1 x 125ml

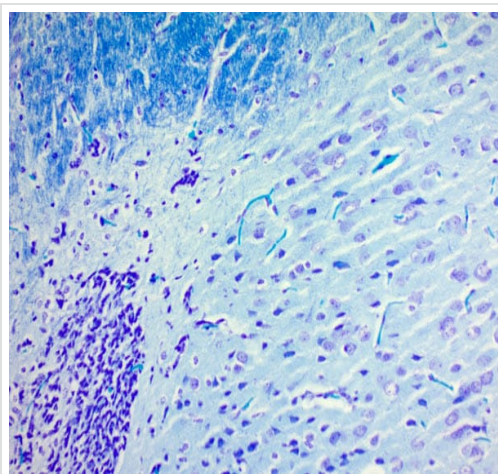
## Relevance

Myelin is produced by oligodendrocytes in the CNS and Schwann cells in the peripheral nervous system (PNS). Defining the differences between CNS and PNS myelin may provide insights into the process of myelination and the pathogenesis of certain idiopathic diseases involving myelin such as multiple sclerosis, certain leukodystrophies, and other myelinopathies. Myelin is composed of about 80% lipid fat and about 20% protein. Some of the proteins that make up myelin are Myelin basic protein (MBP), Myelin oligodendrocyte glycoprotein (MOG) and Proteolipid protein (PLP). Myelin is made up primarily of a glycolipid called galactocerebroside. The intertwining of the hydrocarbon chains of sphingomyelin serve to strengthen the myelin sheath.

## Cellular localization

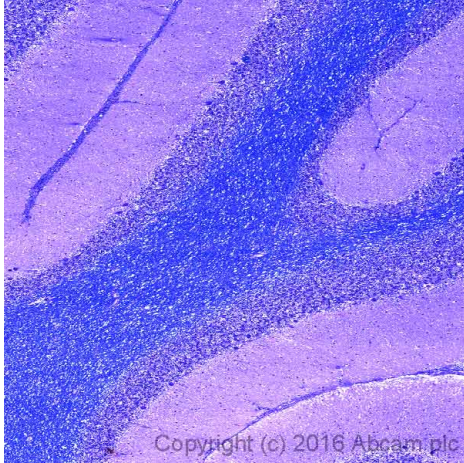
Integral membrane protein.

## Images



ab150675 Luxol Fast Blue Stain Kit (Myelin Stain) staining formalin-fixed-paraffin embedded mouse brain.

ab150675 - Luxol Fast Blue Stain Kit (Myelin Stain)

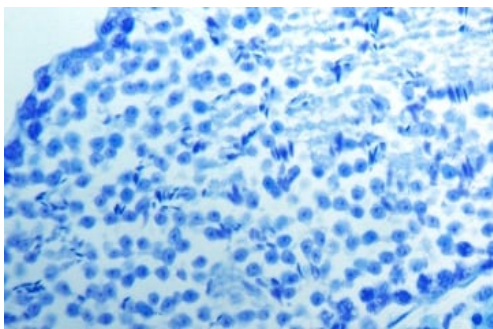


Copyright (c) 2016 Abcam plc

Histology - Luxol Fast Blue

ab150675 (Luxol Fast Blue stain) staining myelin (blue) in formalin fixed paraffin embedded normal human cerebellum, counterstained with cresyl echt violet (purple).

\*Tissue obtained from the Human Research Tissue Bank, supported by the NIHR Cambridge Biomedical Research Centre.



Staining using ab150675 - Luxol Fast Blue Stain Kit

Staining using ab150675 - Luxol Fast Blue Stain Kit.

**Please note:** All products are "FOR RESEARCH USE ONLY. NOT FOR USE IN DIAGNOSTIC PROCEDURES"

### Our Abpromise to you: Quality guaranteed and expert technical support

- Replacement or refund for products not performing as stated on the datasheet
- Valid for 12 months from date of delivery
- Response to your inquiry within 24 hours
- We provide support in Chinese, English, French, German, Japanese and Spanish
- Extensive multi-media technical resources to help you
- We investigate all quality concerns to ensure our products perform to the highest standards

If the product does not perform as described on this datasheet, we will offer a refund or replacement. For full details of the Abpromise, please visit <https://www.abcam.com/abpromise> or contact our technical team.

#### **Terms and conditions**

---

- Guarantee only valid for products bought direct from Abcam or one of our authorized distributors