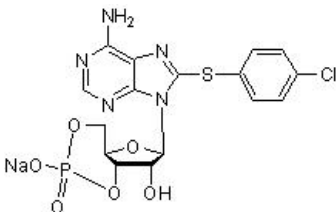


## Product datasheet

# 8-(4-Chlorophenylthio)adenosine 3',5'-cyclic monophosphate (8-CPT-cAMP), Cell permeable cAMP analog. ab120424

[5 References](#) [2 Images](#)

### Overview

<b>Product name</b>	8-(4-Chlorophenylthio)adenosine 3',5'-cyclic monophosphate (8-CPT-cAMP), Cell permeable cAMP analog.
<b>Description</b>	Cell permeable cAMP analog, protein kinase modulator
<b>CAS Number</b>	93882-12-3
<b>Chemical structure</b>	

### Properties

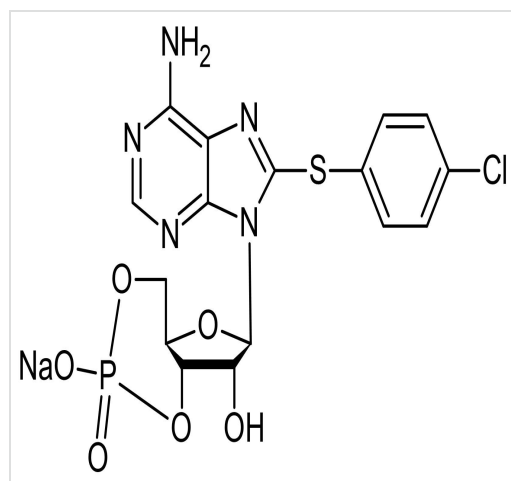
<b>Chemical name</b>	8-(4-Chlorophenylthio)-adenosine-3',5'-cyclic monophosphate sodium salt
<b>Molecular weight</b>	493.79
<b>Molecular formula</b>	C <sub>16</sub> H <sub>14</sub> ClN <sub>5</sub> NaO <sub>6</sub> PS
<b>PubChem identifier</b>	23672705
<b>Storage instructions</b>	Store at -20°C. Store under desiccating conditions. The product can be stored for up to 12 months.
<b>Solubility overview</b>	Soluble in water to 50 mM
<b>Handling</b>	Wherever possible, you should prepare and use solutions on the same day. However, if you need to make up stock solutions in advance, we recommend that you store the solution as aliquots in tightly sealed vials at -20°C. Generally, these will be useable for up to one month. Before use, and prior to opening the vial we recommend that you allow your product to equilibrate to room temperature for at least 1 hour.  Need more advice on solubility, usage and handling? Please visit our <a href="#">frequently asked questions (FAQ) page</a> for more details.
<b>SMILES</b>	C1[C@@H]2[C@H]([C@H]([C@@H]2O)COP(=O)([O-])[O-])N3=NC=NC(=N3)SC4=CC=C(C=C4)Cl

(O2)N3C4=NC=NC(=C4N=C3SC5=CC=C(C=C5)Cl)N)O)OP(=O)(O1)[O-].[Na+]

## Source

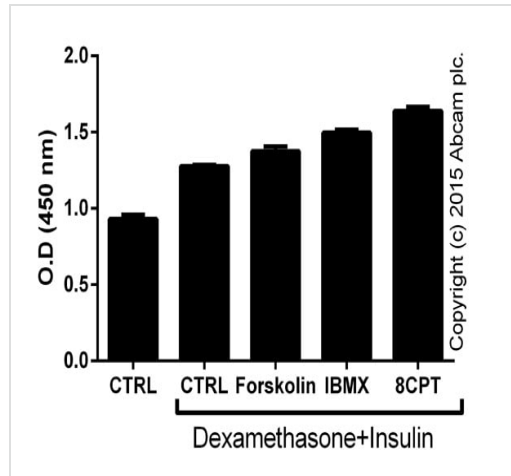
Synthetic

## Images



Chemical Structure - 8-(4-Chlorophenylthio)adenosine 3',5'-cyclic monophosphate (8-CPT-cAMP), Cell permeable cAMP analog. (ab120424)

2D chemical structure image of ab120424, 8-(4-Chlorophenylthio)adenosine 3',5'-cyclic monophosphate (8-CPT-cAMP), Cell permeable cAMP analog.



Functional Studies - 8-(4-Chlorophenylthio)adenosine 3',5'-cyclic monophosphate (8-CPT-cAMP), Cell permeable cAMP analog. (ab120424)

1e7 3T3-L1 cells were treated for 15 minutes with 1  $\mu$ M dexamethasone ([ab120743](#)) and 1  $\mu$ g x mL<sup>-1</sup> insulin ([ab123768](#)) with the addition of 50  $\mu$ M forskolin ([ab120058](#)), 0.5 mM IBMX ([ab120840](#)) or 0.1 mM 8-CPT-cAMP (ab120424), extracted according to the protocol. Lysates were diluted 50-fold, and tested in duplicates (+/-SD).

**Please note:** All products are "FOR RESEARCH USE ONLY. NOT FOR USE IN DIAGNOSTIC PROCEDURES, NOT FOR USE IN HUMANS"

**Our Abpromise to you: Quality guaranteed and expert technical support**

- Replacement or refund for products not performing as stated on the datasheet
- Valid for 12 months from date of delivery
- Response to your inquiry within 24 hours
- We provide support in Chinese, English, French, German, Japanese and Spanish
- Extensive multi-media technical resources to help you
- We investigate all quality concerns to ensure our products perform to the highest standards

If the product does not perform as described on this datasheet, we will offer a refund or replacement. For full details of the Abpromise, please visit <https://www.abcam.com/abpromise> or contact our technical team.

#### **Terms and conditions**

---

- Guarantee only valid for products bought direct from Abcam or one of our authorized distributors
- Abcam biochemicals are novel compounds and we have not tested their biological activity in house. Please use the literature to identify how to use these products effectively. If you require further assistance please contact the scientific support team