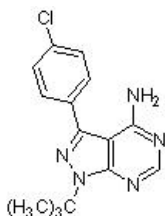


## Product datasheet

### PP2, Src and RIP2 kinase inhibitor ab120308

[14 References](#) [2 Images](#)

#### Overview

Product name	PP2, Src and RIP2 kinase inhibitor
Description	Src and RIP2 kinase inhibitor
CAS Number	172889-27-9
Chemical structure	

#### Properties

Chemical name	1- <i>tert</i> -Butyl-3-(4-chlorophenyl)-1 <i>H</i> -pyrazolo[3,4- <i>d</i> ]pyrimidin-4-amine
Molecular weight	301.78
Molecular formula	C <sub>15</sub> H <sub>16</sub> ClN <sub>5</sub>
PubChem identifier	4878
Storage instructions	Store at +4°C. Store under desiccating conditions. The product can be stored for up to 12 months.
Solubility overview	Soluble in DMSO to 50 mM and in ethanol to 10 mM
Handling	<p>This product is supplied in one (or more) pack size which is freeze dried. Therefore the contents may not be readily visible, as they can coat the bottom or walls of the vial. Please see our <a href="#">FAQs</a> and <a href="#">information page</a> for more details on handling.</p> <p>Wherever possible, you should prepare and use solutions on the same day. However, if you need to make up stock solutions in advance, we recommend that you store the solution as aliquots in tightly sealed vials at -20°C. Generally, these will be useable for up to one month. Before use, and prior to opening the vial we recommend that you allow your product to equilibrate to room temperature for at least 1 hour.</p> <p>Toxic, refer to SDS for further information.</p> <p>Need more advice on solubility, usage and handling? Please visit our <a href="#">frequently asked questions (FAQ) page</a> for more details.</p>
SMILES	<chem>Clc1ccc(cc1)c3nn(c2ncnc(N)c23)C(C)(C)C</chem>

Source

Synthetic

## Applications

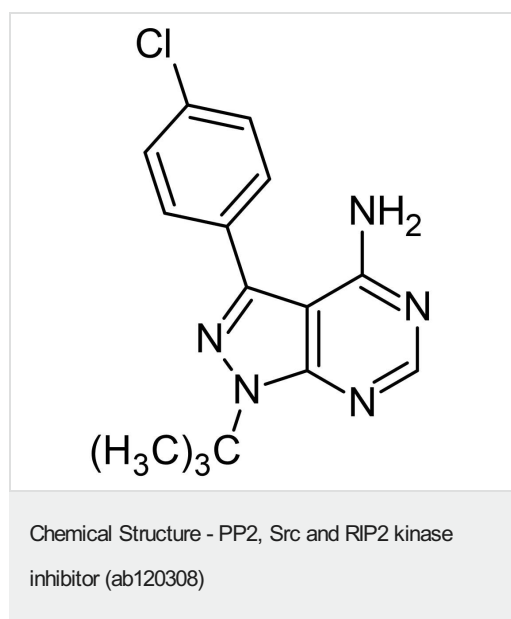
### The Abpromise guarantee

Our **Abpromise guarantee** covers the use of ab120308 in the following tested applications.

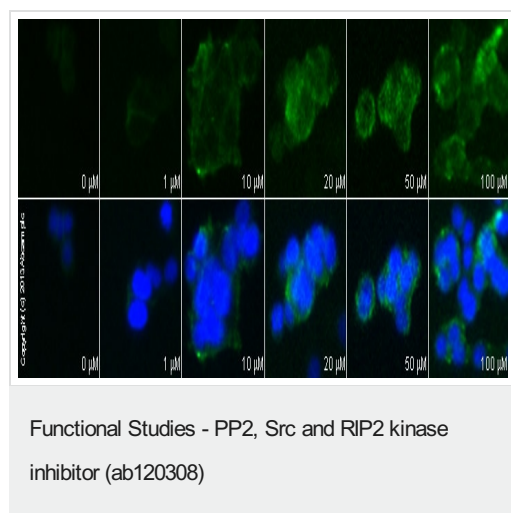
The application notes include recommended starting dilutions; optimal dilutions/concentrations should be determined by the end user.

Application	Abreviews	Notes
Functional Studies		Use at an assay dependent concentration.

## Images



2D chemical structure image of ab120308, PP2, Src and RIP2 kinase inhibitor



**ab11512** staining E-Cadherin in SW480 cells treated with PP2 (ab120308), by ICC/IF. Increase in E-cadherin expression correlates with increased concentration of PP2, as described in literature.

The cells were incubated at 37°C for 24h in media containing different concentrations of ab120308 (PP2) in DMSO, fixed with 4% formaldehyde for 10 minutes at room temperature and blocked with PBS containing 10% goat serum, 0.3 M glycine, 1% BSA and 0.1% tween for 2h at room temperature. Staining of the treated cells with **ab11512** (5 μg/ml) was performed overnight at 4°C in PBS containing 1% BSA and 0.1% tween. A DyLight 488 goat anti-rat polyclonal antibody (**ab96971**) at 1/250 dilution was used as the secondary antibody. Nuclei were counterstained with DAPI and are shown in blue.

### **Our Abpromise to you: Quality guaranteed and expert technical support**

---

- Replacement or refund for products not performing as stated on the datasheet
- Valid for 12 months from date of delivery
- Response to your inquiry within 24 hours
- We provide support in Chinese, English, French, German, Japanese and Spanish
- Extensive multi-media technical resources to help you
- We investigate all quality concerns to ensure our products perform to the highest standards

If the product does not perform as described on this datasheet, we will offer a refund or replacement. For full details of the Abpromise, please visit <https://www.abcam.com/abpromise> or contact our technical team.

### **Terms and conditions**

---

- Guarantee only valid for products bought direct from Abcam or one of our authorized distributors
- Abcam biochemicals are novel compounds and we have not tested their biological activity in house. Please use the literature to identify how to use these products effectively. If you require further assistance please contact the scientific support team