

Product datasheet

Pepsin Solution (Antigen Retrieval) ab64201

[1 Image](#)

Overview

Product name	Pepsin Solution (Antigen Retrieval)
Tested applications	Suitable for: IHC-P
General notes	<p>Pepsin for protease-induced antigen retrieval (PIER) during IHC procedures (ab64201). Ready-to-use formulation. Tris buffer pH 2.0</p> <p>Staining Protocol:</p> <p>Incubate tissue section for 10 minutes at 37°C.</p> <p>Rinse and proceed with immunostaining.</p> <p>Pepsin is a commonly used digestive enzyme for immunohistochemical procedures.</p> <p>Other products for IHC</p> <p>Other enzymes for antigen retrieval include: <u>Proteinase K Antigen Retrieval Solution ab64220</u> and <u>Trypsin Antigen Retrieval Kit ab259256</u>.</p> <p>Find more kits and reagents for antigen retrieval, blocking, signal amplification, visualization, counterstaining, and mounting in the <u>IHC kits and reagents guide</u>.</p>

Properties

Form	Liquid
Storage instructions	Store at +4°C.
Storage buffer	<p>pH: 1.90</p> <p>Preservative: 0.5% Sodium azide</p> <p>Constituents: 0.25% Pepsin, 0.22% Polyoxyethylene lauryl ether, 1.5% Hydrochloric acid</p>
Reagent notes	Pepsin is a commonly used digestive enzyme for immunohistochemical procedures.
Function	Shows particularly broad specificity; although bonds involving phenylalanine and leucine are preferred, many others are also cleaved to some extent.
Sequence similarities	Belongs to the peptidase A1 family.
Cellular localization	Secreted.
Cellular localization	Secreted.

Applications

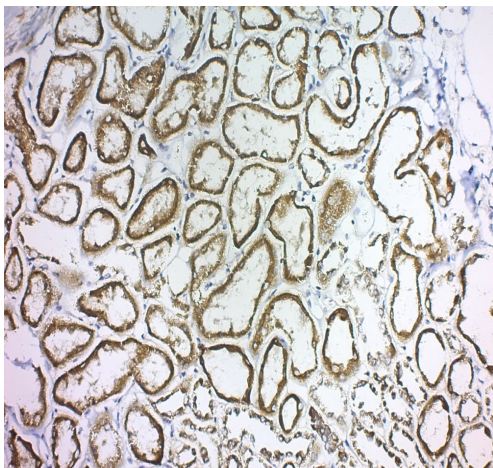
The Abpromise guarantee

Our **Abpromise guarantee** covers the use of ab64201 in the following tested applications.

The application notes include recommended starting dilutions; optimal dilutions/concentrations should be determined by the end user.

Application	Abreviews	Notes
IHC-P		Use at an assay dependent concentration.

Images



Immunohistochemistry (Formalin/PFA-fixed paraffin-embedded sections) - Pepsin Solution (ab64201)

ab64201 Pepsin Solution used with Laminin on Human Kidney

Please note: All products are "FOR RESEARCH USE ONLY. NOT FOR USE IN DIAGNOSTIC PROCEDURES"

Our Abpromise to you: Quality guaranteed and expert technical support

- Replacement or refund for products not performing as stated on the datasheet
- Valid for 12 months from date of delivery
- Response to your inquiry within 24 hours
- We provide support in Chinese, English, French, German, Japanese and Spanish
- Extensive multi-media technical resources to help you
- We investigate all quality concerns to ensure our products perform to the highest standards

If the product does not perform as described on this datasheet, we will offer a refund or replacement. For full details of the Abpromise, please visit <https://www.abcam.com/abpromise> or contact our technical team.

Terms and conditions

- Guarantee only valid for products bought direct from Abcam or one of our authorized distributors