

Product datasheet

ATG7 overexpression 293T lysate (whole cell) ab94329

[2 Images](#)

Overview

Product name	ATG7 overexpression 293T lysate (whole cell)
General notes	ab94329 is a 293T cell transfected lysate in which Human ATG7 has been transiently over-expressed using a pCMV- ATG7 plasmid. The lysate is provided in 1X Sample Buffer.
Tested applications	Suitable for: WB

Properties

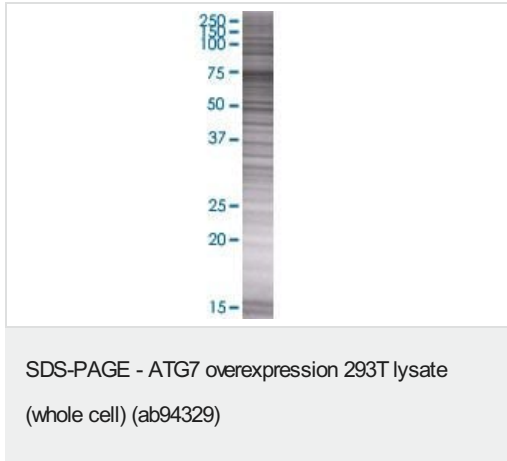
Mycoplasma free	Yes
Form	Liquid
Storage instructions	Shipped on dry ice. Upon delivery aliquot and store at -20°C. Avoid freeze / thaw cycles.
Storage buffer	Constituents: 0.01% Bromophenol blue, 2.3% Beta mercaptoethanol, 2% Sodium lauryl sulfate, 0.788% Tris HCl, 10% Glycerol (glycerin, glycerine)
Background	<p>Domain: The C-terminal part of the protein is essential for the dimerization and interaction with ATG3 and ATG12. The N-terminal FAP motif (residues 15 to 17) is essential for the formation of the ATG89-PE and ATG5-ATG12 conjugates. Function: E1-like activating enzyme involved in the 2 ubiquitin-like systems required for cytoplasm to vacuole transport (Cvt) and autophagy. Activates ATG12 for its conjugation with ATG5 as well as the ATG8 family proteins for their conjugation with phosphatidylethanolamine. Both systems are needed for the ATG8 association to Cvt vesicles and autophagosomes membranes. Required for autophagic death induced by caspase-8 inhibition. Required for mitophagy which contributes to regulate mitochondrial quantity and quality by eliminating the mitochondria to a basal level to fulfill cellular energy requirements and preventing excess ROS production. Modulates p53/TP53 activity to regulate cell cycle and survival during metabolic stress. Plays also a key role in the maintenance of axonal homeostasis, the prevention of axonal degeneration, the maintenance of hematopoietic stem cells, the formation of Paneth cell granules, as well as in adipose differentiation. PTM: Acetylated by EP300. Similarity: Belongs to the ATG7 family. Tissue specificity: Widely expressed, especially in kidney, liver, lymph nodes and bone marrow.</p>

Applications

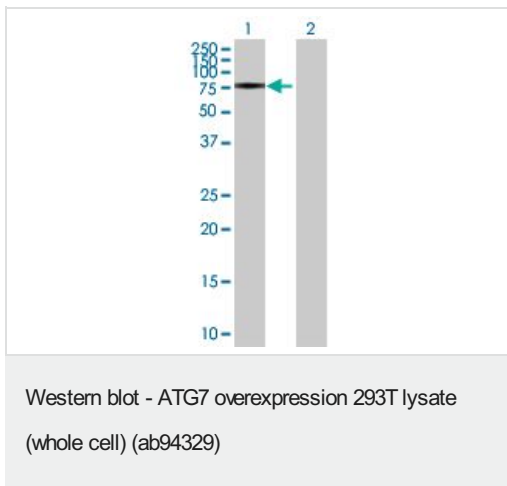
The Abpromise guarantee Our **Abpromise guarantee** covers the use of ab94329 in the following tested applications. The application notes include recommended starting dilutions; optimal dilutions/concentrations should be determined by the end user.

Application	Abreviews	Notes
WB		Use at an assay dependent dilution.

Images



ab94329 at 15µg/lane on an SDS-PAGE gel.



All lanes : Anti-ATG7 antibody ([ab89775](#)) at 1/500 dilution

Lane 1 : ATG7 overexpression 293T lysate (whole cell) (ab94329)

Lane 2 : 293T non-transfected lysate

Lysates/proteins at 25 µg per lane.

Secondary

All lanes : Goat Anti-mouse IgG (H and L) HRP conjugated at 1/2500 dilution

Please note: All products are "FOR RESEARCH USE ONLY. NOT FOR USE IN DIAGNOSTIC PROCEDURES"

Our Abpromise to you: Quality guaranteed and expert technical support

- Replacement or refund for products not performing as stated on the datasheet
- Valid for 12 months from date of delivery
- Response to your inquiry within 24 hours
- We provide support in Chinese, English, French, German, Japanese and Spanish
- Extensive multi-media technical resources to help you
- We investigate all quality concerns to ensure our products perform to the highest standards

If the product does not perform as described on this datasheet, we will offer a refund or replacement. For full details of the Abpromise, please visit <https://www.abcam.com/abpromise> or contact our technical team.

Terms and conditions

- Guarantee only valid for products bought direct from Abcam or one of our authorized distributors