

Product datasheet

Cytokeratin 19 overexpression 293T lysate (whole cell) ab94061

[2 Images](#)

Overview

| | |
|----------------------------|--|
| Product name | Cytokeratin 19 overexpression 293T lysate (whole cell) |
| General notes | ab94061 is a 293T cell transfected lysate in which Human Cytokeratin 19 has been transiently over-expressed using a pCMV-Cytokeratin 19 plasmid. The lysate is provided in 1X Sample Buffer. |
| Tested applications | Suitable for: WB |

Properties

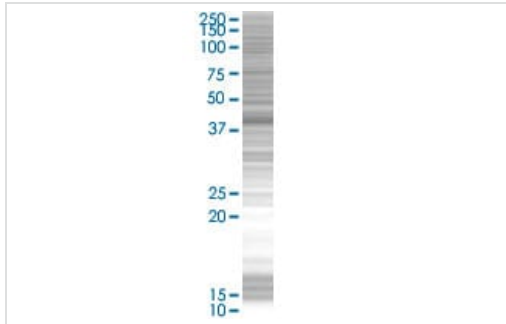
| | |
|-----------------------------|--|
| Mycoplasma free | Yes |
| Form | Liquid |
| Storage instructions | Shipped on dry ice. Upon delivery aliquot and store at -20°C. Avoid freeze / thaw cycles. |
| Storage buffer | Constituents: 0.01% Bromophenol blue, 2.3% Beta mercaptoethanol, 2% Sodium lauryl sulfate, 0.788% Tris HCl, 10% Glycerol (glycerin, glycerine) |
| Background | Developmental stage: Present in hair follicles at all stages of development. Domain: This keratin differs from all other IF proteins in lacking the C-terminal tail domain. Function: Involved in the organization of myofibers. Together with KRT8, helps to link the contractile apparatus to dystrophin at the costameres of striated muscle. Similarity: Belongs to the intermediate filament family. Tissue specificity: Expressed in a defined zone of basal keratinocytes in the deep outer root sheath of hair follicles. Also observed in sweat gland and mammary gland ductal and secretory cells, bile ducts, gastrointestinal tract, bladder urothelium, oral epithelia, esophagus, ectocervical epithelium (at protein level). Expressed in epidermal basal cells, in nipple epidermis and a defined region of the hair follicle. Also seen in a subset of vascular wall cells in both the veins and artery of human umbilical cord, and in umbilical cord vascular smooth muscle. Observed in muscle fibers accumulating in the costameres of myoplasm at the sarcolemma in structures that contain dystrophin and spectrin. |

Applications

The Abpromise guarantee Our **Abpromise guarantee** covers the use of ab94061 in the following tested applications. The application notes include recommended starting dilutions; optimal dilutions/concentrations should be determined by the end user.

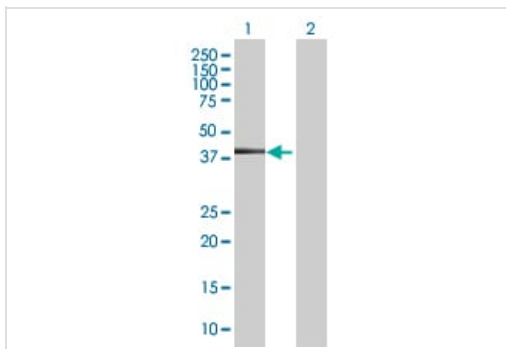
| Application | Abreviews | Notes |
|-------------|-----------|-------------------------------------|
| WB | | Use at an assay dependent dilution. |

Images



SDS-PAGE - Cytokeratin 19 overexpression 293T lysate (whole cell) (ab94061)

ab94061 at 15µg/lane on an SDS-PAGE gel.



Western blot - Cytokeratin 19 overexpression 293T lysate (whole cell) (ab94061)

All lanes : Anti-Cytokeratin 19 antibody (**ab90440**) at 1/500 dilution

Lane 1 : Cytokeratin 19 overexpression 293T lysate (whole cell) (ab94061)

Lane 2 : 293T non-transfected lysate

Lysates/proteins at 25 µg per lane.

Secondary

All lanes : Goat Anti-mouse IgG (H and L) HRP conjugated at 1/2500 dilution

Please note: All products are "FOR RESEARCH USE ONLY. NOT FOR USE IN DIAGNOSTIC PROCEDURES"

Our Abpromise to you: Quality guaranteed and expert technical support

- Replacement or refund for products not performing as stated on the datasheet
- Valid for 12 months from date of delivery
- Response to your inquiry within 24 hours
- We provide support in Chinese, English, French, German, Japanese and Spanish
- Extensive multi-media technical resources to help you
- We investigate all quality concerns to ensure our products perform to the highest standards

If the product does not perform as described on this datasheet, we will offer a refund or replacement. For full details of the Abpromise, please visit <https://www.abcam.com/abpromise> or contact our technical team.

Terms and conditions

- Guarantee only valid for products bought direct from Abcam or one of our authorized distributors