

Product datasheet

DOK3 overexpression 293T lysate (whole cell) ab94169

[2 Images](#)

Overview

Product name	DOK3 overexpression 293T lysate (whole cell)
General notes	ab94169 is a 293T cell transfected lysate in which Human DOK3 has been transiently over-expressed using a pCMV-DOK3 plasmid. The lysate is provided in 1X Sample Buffer.
Tested applications	Suitable for: WB

Properties

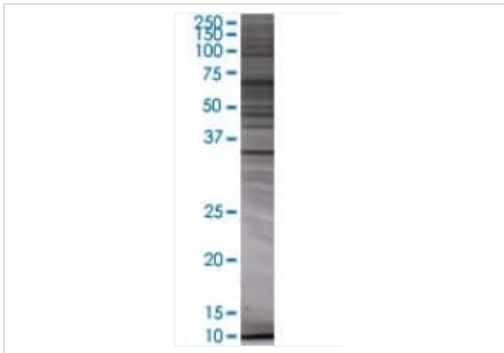
Mycoplasma free	Yes
Form	Liquid
Storage instructions	Shipped on dry ice. Upon delivery aliquot and store at -20°C. Avoid freeze / thaw cycles.
Storage buffer	Constituents: 0.01% Bromophenol blue, 2.3% Beta mercaptoethanol, 2% Sodium lauryl sulfate, 0.788% Tris HCl, 10% Glycerol (glycerin, glycerine)
Background	Function: DOK proteins are enzymatically inert adaptor or scaffolding proteins. They provide a docking platform for the assembly of multimolecular signaling complexes. DOK3 is a negative regulator of JNK signaling in B-cells through interaction with INPP5D/SHIP1. May modulate Abl function. Tissue specificity: Expressed in spleen. Similarity: Belongs to the DOK family. Type A subfamily. Contains 1 IRS-type PTB domain. Contains 1 PH domain. Domain: PTB domain mediates receptor interaction. PTM: Constitutively tyrosine-phosphorylated. On IL2 stimulation, phosphorylated on C-terminal tyrosine residues possibly by Src kinases. Can also be phosphorylated by ABL kinase.

Applications

The Abpromise guarantee Our **Abpromise guarantee** covers the use of ab94169 in the following tested applications. The application notes include recommended starting dilutions; optimal dilutions/concentrations should be determined by the end user.

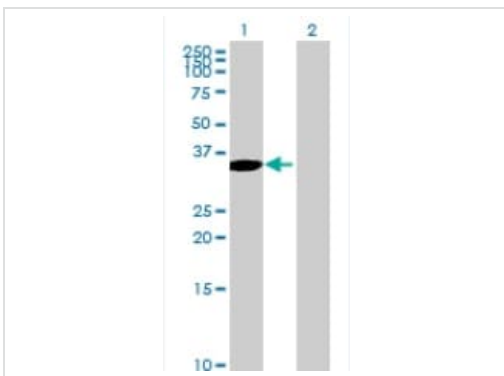
Application	Abreviews	Notes
WB		Use at an assay dependent dilution.

Images



SDS-PAGE - DOK3 overexpression 293T lysate
(whole cell) (ab94169)

ab94169 at 15µg/lane on an SDS-PAGE gel.



Western blot - DOK3 overexpression 293T lysate
(whole cell) (ab94169)

All lanes : Anti-DOK3 antibody (**ab89327**) at 1/500 dilution

Lane 1 : DOK3 overexpression 293T lysate (whole cell) (ab94169)

Lane 2 : 293T non-transfected lysate

Lysates/proteins at 25 µg per lane.

Secondary

All lanes : Goat Anti-mouse IgG (H and L) HRP conjugate at 1/2500 dilution

Please note: All products are "FOR RESEARCH USE ONLY. NOT FOR USE IN DIAGNOSTIC PROCEDURES"

Our Abpromise to you: Quality guaranteed and expert technical support

- Replacement or refund for products not performing as stated on the datasheet
- Valid for 12 months from date of delivery
- Response to your inquiry within 24 hours
- We provide support in Chinese, English, French, German, Japanese and Spanish
- Extensive multi-media technical resources to help you
- We investigate all quality concerns to ensure our products perform to the highest standards

If the product does not perform as described on this datasheet, we will offer a refund or replacement. For full details of the Abpromise, please visit <https://www.abcam.com/abpromise> or contact our technical team.

Terms and conditions

- Guarantee only valid for products bought direct from Abcam or one of our authorized distributors