

## Product datasheet

# Eph receptor A3 overexpression 293T lysate (whole cell) ab94111

[2 Images](#)

### Overview

<b>Product name</b>	Eph receptor A3 overexpression 293T lysate (whole cell)
<b>General notes</b>	ab94111 is a 293T cell transfected lysate in which Human Eph receptor A3 has been transiently over-expressed using a pCMV-Eph receptor A3 plasmid. The lysate is provided in 1X Sample Buffer. <b>Note:</b> For more details about how the transfected lysate was prepared <a href="#">view preparation notes</a>
<b>Tested applications</b>	<b>Suitable for:</b> WB

### Properties

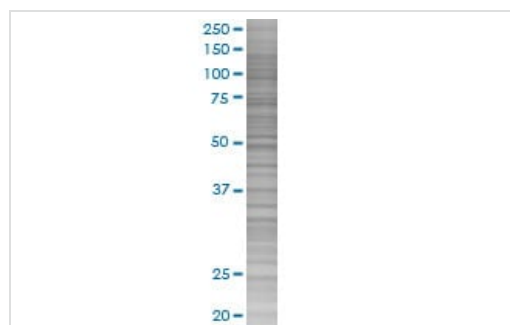
<b>Mycoplasma free</b>	Yes
<b>Form</b>	Liquid
<b>Storage instructions</b>	Shipped on dry ice. Upon delivery aliquot and store at -20°C. Avoid freeze / thaw cycles.
<b>Storage buffer</b>	Constituents: 0.01% Bromophenol blue, 2.3% Beta mercaptoethanol, 2% Sodium lauryl sulfate, 0.788% Tris HCl, 10% Glycerol (glycerin, glycerine)
<b>Background</b>	Function: Receptor for members of the ephrin-A family. Binds to ephrin-A2, -A3, -A4 and -A5. Could play a role in lymphoid function. Tissue specificity: Widely expressed. Highest level in placenta. Disease: Defects in EPHA3 may be a cause of colorectal cancer (CRC) [MIM:114500]. Similarity: Belongs to the protein kinase superfamily. Tyr protein kinase family. Ephrin receptor subfamily. Contains 2 fibronectin type-III domains. Contains 1 protein kinase domain. Contains 1 SAM (sterile alpha motif) domain.

### Applications

**The Abpromise guarantee** Our [Abpromise guarantee](#) covers the use of ab94111 in the following tested applications. The application notes include recommended starting dilutions; optimal dilutions/concentrations should be determined by the end user.

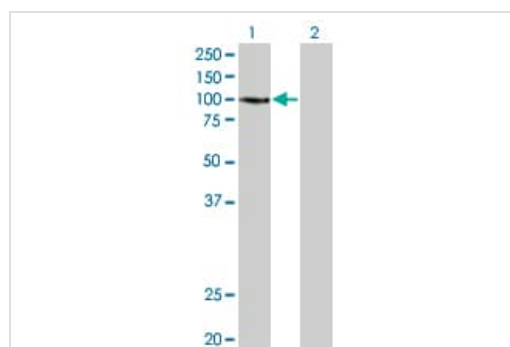
Application	Abreviews	Notes
WB		Use at an assay dependent dilution.

## Images



SDS-PAGE - Eph receptor A3 overexpression 293T lysate (whole cell) (ab94111)

ab94111 at 15µg/lane on an SDS-PAGE gel



Western blot - Eph receptor A3 overexpression 293T lysate (whole cell) (ab94111)

**All lanes :** Anti-Eph receptor A3 antibody (**ab54623**) at 1/500 dilution

**Lane 1 :** Eph receptor A3 overexpression 293T lysate (whole cell) (ab94111)

**Lane 2 :** 293T non Transfected Lysate

Lysates/proteins at 25 µg per lane.

### Secondary

**All lanes :** Goat Anti-mouse IgG (H and L) HRP conjugated at 1/2500 dilution

**Please note:** All products are "FOR RESEARCH USE ONLY. NOT FOR USE IN DIAGNOSTIC PROCEDURES"

## Our Abpromise to you: Quality guaranteed and expert technical support

- Replacement or refund for products not performing as stated on the datasheet
- Valid for 12 months from date of delivery
- Response to your inquiry within 24 hours
- We provide support in Chinese, English, French, German, Japanese and Spanish
- Extensive multi-media technical resources to help you
- We investigate all quality concerns to ensure our products perform to the highest standards

If the product does not perform as described on this datasheet, we will offer a refund or replacement. For full details of the Abpromise, please visit <https://www.abcam.com/abpromise> or contact our technical team.

## Terms and conditions

---

- Guarantee only valid for products bought direct from Abcam or one of our authorized distributors