

Product datasheet

Flotillin 2 / ESA overexpression 293T lysate (whole cell) ab94260

[2 Images](#)

Overview

Product name	Flotillin 2 / ESA overexpression 293T lysate (whole cell)
General notes	ab94260 is a 293T cell transfected lysate in which Human Flotillin 2 / ESA has been transiently over-expressed using a pCMV-Flotillin 2 / ESA plasmid. The lysate is provided in 1X Sample Buffer. Note: For more details about how the transfected lysate was prepared view preparation notes
Tested applications	Suitable for: WB

Properties

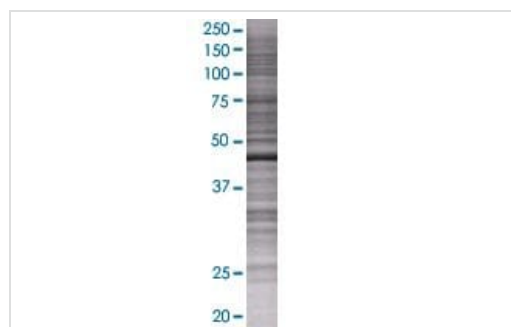
Mycoplasma free	Yes
Form	Liquid
Storage instructions	Shipped on dry ice. Upon delivery aliquot and store at -20°C. Avoid freeze / thaw cycles.
Storage buffer	Constituents: 0.01% Bromophenol blue, 2.3% Beta mercaptoethanol, 2% Sodium lauryl sulfate, 0.788% Tris HCl, 10% Glycerol (glycerin, glycerine)
Background	Function: May act as a scaffolding protein within caveolar membranes, functionally participating in formation of caveolae or caveolae-like vesicles. May be involved in epidermal cell adhesion and epidermal structure and function. Tissue specificity: In skin, expressed in epidermis and epidermal appendages but not in dermis. Expressed in all layers of the epidermis except the basal layer. In hair follicles, expressed in the suprabasal layer but not the basal layer. Also expressed in melanoma and carcinoma cell lines, fibroblasts and foreskin melanocytes. Similarity: Belongs to the band 7/mec-2 family. Flotillin subfamily.

Applications

The Abpromise guarantee Our [Abpromise guarantee](#) covers the use of ab94260 in the following tested applications. The application notes include recommended starting dilutions; optimal dilutions/concentrations should be determined by the end user.

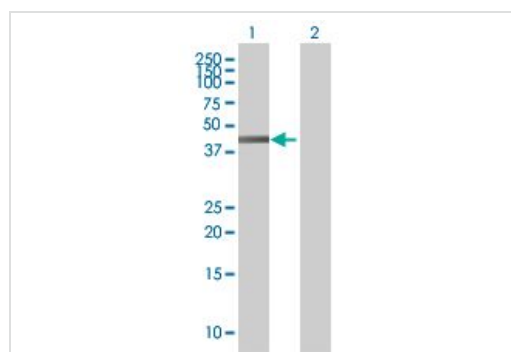
Application	Abreviews	Notes
WB		Use at an assay dependent dilution.

Images



SDS-PAGE - Flotillin 2 / ESA overexpression 293T lysate (whole cell) (ab94260)

ab94260 at 15µg/lane on an SDS-PAGE gel.



Western blot - Flotillin 2 / ESA overexpression 293T lysate (whole cell) (ab94260)

All lanes : Anti-Flotillin 2/ESA antibody (**ab88498**) at 1/500 dilution

Lane 1 : Flotillin 2 / ESA overexpression 293T lysate (whole cell) (ab94260)

Lane 2 : 293T Non Transfected Lysate

Lysates/proteins at 25 µg per lane.

Secondary

All lanes : Goat Anti-mouse IgG (H and L) HRP conjugated at 1/2500 dilution

Please note: All products are "FOR RESEARCH USE ONLY. NOT FOR USE IN DIAGNOSTIC PROCEDURES"

Our Abpromise to you: Quality guaranteed and expert technical support

- Replacement or refund for products not performing as stated on the datasheet
- Valid for 12 months from date of delivery
- Response to your inquiry within 24 hours
- We provide support in Chinese, English, French, German, Japanese and Spanish
- Extensive multi-media technical resources to help you
- We investigate all quality concerns to ensure our products perform to the highest standards

If the product does not perform as described on this datasheet, we will offer a refund or replacement. For full details of the Abpromise, please visit <https://www.abcam.com/abpromise> or contact our technical team.

Terms and conditions

- Guarantee only valid for products bought direct from Abcam or one of our authorized distributors