

## Product datasheet

# GAS 6 overexpression 293T lysate (whole cell) ab94148

2 Images

### Overview

<b>Product name</b>	GAS 6 overexpression 293T lysate (whole cell)
<b>General notes</b>	ab94148 is a 293T cell transfected lysate in which Human GAS 6 has been transiently over-expressed using a pCMV-GAS 6 plasmid. The lysate is provided in 1X Sample Buffer.
<b>Tested applications</b>	<b>Suitable for:</b> WB

### Properties

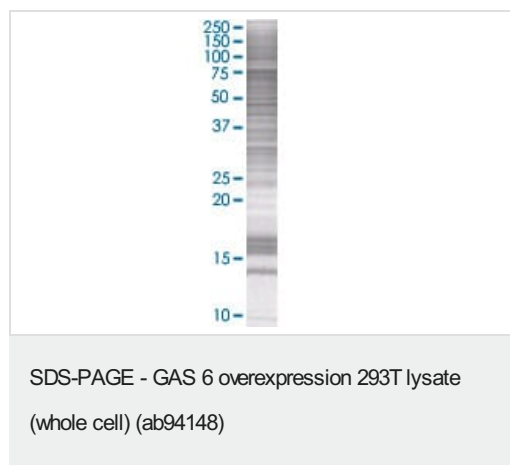
<b>Mycoplasma free</b>	Yes
<b>Form</b>	Liquid
<b>Storage instructions</b>	Shipped on dry ice. Upon delivery aliquot and store at -20°C. Avoid freeze / thaw cycles.
<b>Storage buffer</b>	Constituents: 0.01% Bromophenol blue, 2.3% Beta mercaptoethanol, 2% Sodium lauryl sulfate, 0.788% Tris HCl, 10% Glycerol (glycerin, glycerine)
<b>Background</b>	Function: Ligand for tyrosine-protein kinase receptors AXL, TYRO3 and MER whose signaling is implicated in cell growth and survival, cell adhesion and cell migration. GAS6/AXL signaling plays a role in various processes such as endothelial cell survival during acidification by preventing apoptosis, optimal cytokine signaling during human natural killer cell development, hepatic regeneration, gonadotropin-releasing hormone neuron survival and migration, platelet activation, or regulation of thrombotic responses. Tissue specificity: Plasma. Isoform 1 and isoform 2 are widely expressed. Isoform 1 is the predominant form in spleen. Similarity: Contains 4 EGF-like domains. Contains 1 Gla (gamma-carboxy-glutamate) domain. Contains 2 laminin G-like domains. PTM: Isoform 1 is proteolytically processed after secretion to yield a N-terminal 36 kDa protein and a C-terminal 50 kDa protein including the laminin G-like domains which activates AXL. Gamma-carboxyglutamate residues are formed by vitamin K dependent carboxylation. These residues are essential for the binding of calcium.

### Applications

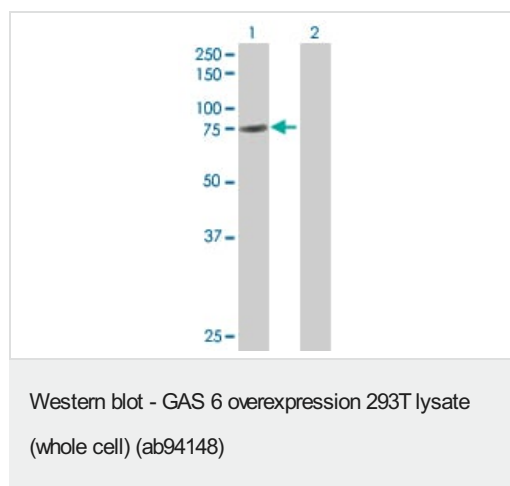
**The Abpromise guarantee** Our **Abpromise guarantee** covers the use of ab94148 in the following tested applications. The application notes include recommended starting dilutions; optimal dilutions/concentrations should be determined by the end user.

Application	Abreviews	Notes
WB		Use at an assay dependent dilution.

## Images



ab94148 at 15µg/lane on an SDS-PAGE gel.



**All lanes :** Anti-GAS 6 antibody (**ab67099**) at 1/500 dilution

**Lane 1 :** GAS 6 overexpression 293T lysate (whole cell) (ab94148)

**Lane 2 :** 293T non-transfected lysate

Lysates/proteins at 25 µg per lane.

### Secondary

**All lanes :** Goat Anti-mouse IgG (H and L) HRP conjugated at 1/2500 dilution

**Please note:** All products are "FOR RESEARCH USE ONLY. NOT FOR USE IN DIAGNOSTIC PROCEDURES"

## Our Abpromise to you: Quality guaranteed and expert technical support

- Replacement or refund for products not performing as stated on the datasheet
- Valid for 12 months from date of delivery
- Response to your inquiry within 24 hours
- We provide support in Chinese, English, French, German, Japanese and Spanish
- Extensive multi-media technical resources to help you
- We investigate all quality concerns to ensure our products perform to the highest standards

If the product does not perform as described on this datasheet, we will offer a refund or replacement. For full details of the Abpromise, please visit <https://www.abcam.com/abpromise> or contact our technical team.

## **Terms and conditions**

---

- Guarantee only valid for products bought direct from Abcam or one of our authorized distributors