

Product datasheet

ING1 overexpression 293T lysate (whole cell) ab94300

2 Images

Overview

Product name	ING1 overexpression 293T lysate (whole cell)
General notes	ab94300 is a 293T cell transfected lysate in which Human ING1 has been transiently over-expressed using a pCMV-ING1 plasmid. The lysate is provided in 1X Sample Buffer.
Tested applications	Suitable for: WB

Properties

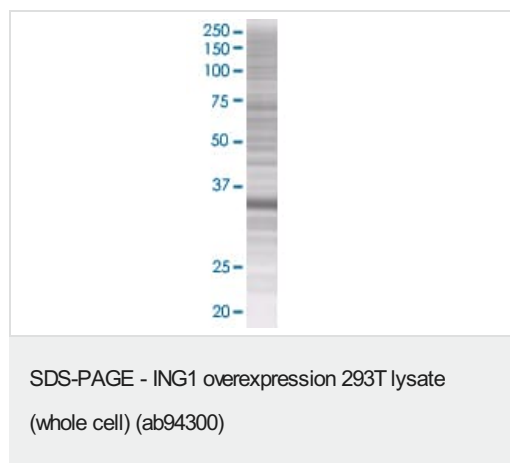
Mycoplasma free	Yes
Form	Liquid
Storage instructions	Shipped on dry ice. Upon delivery aliquot and store at -20°C. Avoid freeze / thaw cycles.
Storage buffer	Constituents: 0.01% Bromophenol blue, 2.3% Beta mercaptoethanol, 2% Sodium lauryl sulfate, 0.788% Tris HCl, 10% Glycerol (glycerin, glycerine)
Background	<p>Function: Cooperates with p53/TP53 in the negative regulatory pathway of cell growth by modulating p53-dependent transcriptional activation. Implicated as a tumor suppressor gene.</p> <p>Tissue specificity: Isoform 2 was expressed in all normal tissues and cells examined, as well as in all breast cancer and melanoma cell lines examined. Isoform 3 was expressed in testis, liver, and kidney, weakly expressed in colon and brain and not expressed in breast and cultured melanocytes. Isoform 4 was highly expressed in testis and weakly expressed in brain, but not expressed in breast, colon, kidney, melanocytes, breast cancer or melanoma cell lines. Disease: Defects in ING1 are a cause of head and neck squamous cell carcinomas (HNSCC) [MIM:275355]; also known as squamous cell carcinoma of the head and neck. Similarity: Belongs to the ING family. Contains 1 PHD-type zinc finger.</p>

Applications

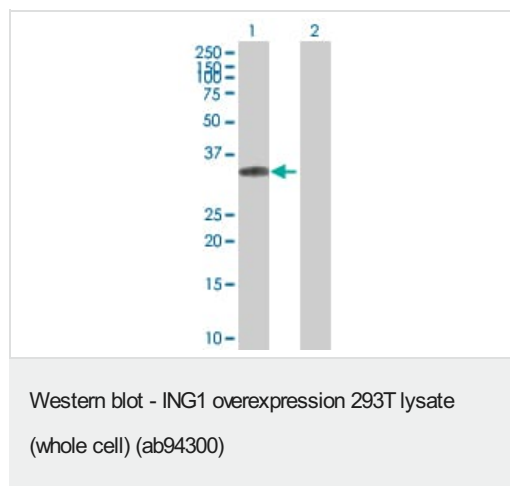
The Abpromise guarantee Our **Abpromise guarantee** covers the use of ab94300 in the following tested applications. The application notes include recommended starting dilutions; optimal dilutions/concentrations should be determined by the end user.

Application	Abreviews	Notes
WB		Use at an assay dependent dilution.

Images



ab94300 at 15µg/lane on an SDS-PAGE gel



All lanes : Anti-ING1 antibody (**ab55306**) at 1/500 dilution

Lane 1 : ING1 overexpression 293T lysate (whole cell) (ab94300)

Lane 2 : 293T non-transfected lysate

Lysates/proteins at 25 µg per lane.

Secondary

All lanes : Goat Anti-mouse IgG (H and L) HRP conjugated at 1/2500 dilution

Please note: All products are "FOR RESEARCH USE ONLY. NOT FOR USE IN DIAGNOSTIC PROCEDURES"

Our Abpromise to you: Quality guaranteed and expert technical support

- Replacement or refund for products not performing as stated on the datasheet
- Valid for 12 months from date of delivery
- Response to your inquiry within 24 hours
- We provide support in Chinese, English, French, German, Japanese and Spanish
- Extensive multi-media technical resources to help you
- We investigate all quality concerns to ensure our products perform to the highest standards

If the product does not perform as described on this datasheet, we will offer a refund or replacement. For full details of the Abpromise, please visit <https://www.abcam.com/abpromise> or contact our technical team.

Terms and conditions

- Guarantee only valid for products bought direct from Abcam or one of our authorized distributors