

## Product datasheet

# MCP4 overexpression 293T lysate (whole cell) ab94142

2 Images

### Overview

<b>Product name</b>	MCP4 overexpression 293T lysate (whole cell)
<b>General notes</b>	ab94142 is a 293T cell transfected lysate in which Human MCP4 has been transiently over-expressed using a pCMV-MCP4 plasmid. The lysate is provided in 1 x Sample Buffer.
<b>Tested applications</b>	<b>Suitable for:</b> WB

### Properties

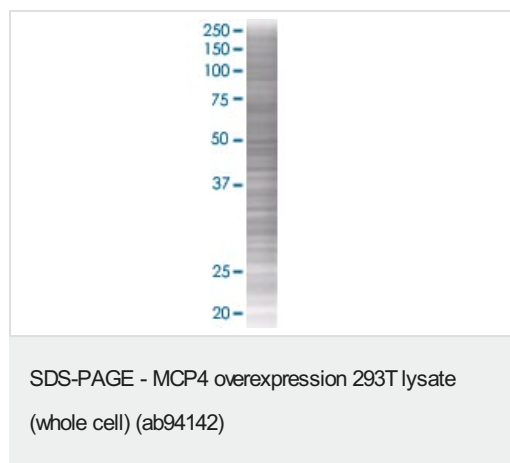
<b>Mycoplasma free</b>	Yes
<b>Form</b>	Liquid
<b>Storage instructions</b>	Shipped on dry ice. Upon delivery aliquot and store at -20°C. Avoid freeze / thaw cycles.
<b>Storage buffer</b>	Constituents: 0.01% Bromophenol blue, 2.3% Beta mercaptoethanol, 2% Sodium lauryl sulfate, 0.788% Tris HCl, 10% Glycerol (glycerin, glycerine)
<b>Background</b>	<p>Function: Chemotactic factor that attracts monocytes, lymphocytes, basophils and eosinophils, but not neutrophils. Signals through CCR2B and CCR3 receptors. Plays a role in the accumulation of leukocytes at both sides of allergic and non-allergic inflammation. May be involved in the recruitment of monocytes into the arterial wall during the disease process of atherosclerosis. May play a role in the monocyte attraction in tissues chronically exposed to exogenous pathogens.</p> <p>Tissue specificity: Widely expressed. Found in small intestine, thymus, colon, lung, trachea, stomach and lymph node. Low levels seen in the pulmonary artery smooth muscle cells. Similarity: Belongs to the intercrine beta (chemokine CC) family. PTM: One major form (form long), and two minor forms (short chain and medium chain) are produced by differential signal peptide cleavage. The medium chain is about 30-fold less active than the long chain.</p>

### Applications

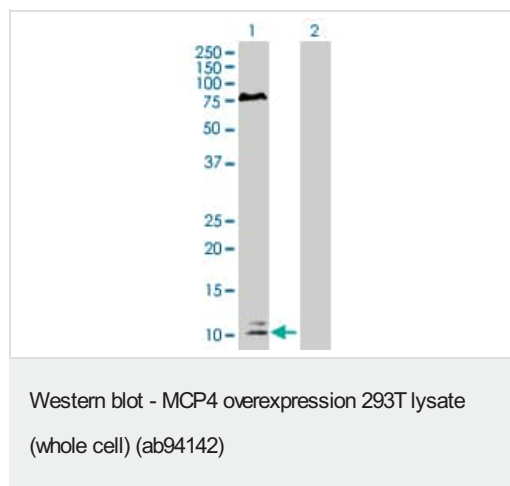
**The Abpromise guarantee** Our **Abpromise guarantee** covers the use of ab94142 in the following tested applications. The application notes include recommended starting dilutions; optimal dilutions/concentrations should be determined by the end user.

Application	Abreviews	Notes
WB		Use at an assay dependent dilution.

## Images



ab94142 at 15µg/lane on an SDS-PAGE gel.



**All lanes :** Anti-MCP4 antibody (**ab88080**) at 1/500 dilution

**Lane 1 :** MCP4 overexpression 293T lysate (whole cell) (ab94142)

**Lane 2 :** 293T non-transfected lysate

Lysates/proteins at 25 µg per lane.

### Secondary

**All lanes :** Goat Anti-mouse IgG (H and L) HRP conjugated at 1/2500 dilution

**Please note:** All products are "FOR RESEARCH USE ONLY. NOT FOR USE IN DIAGNOSTIC PROCEDURES"

## Our Abpromise to you: Quality guaranteed and expert technical support

- Replacement or refund for products not performing as stated on the datasheet
- Valid for 12 months from date of delivery
- Response to your inquiry within 24 hours
- We provide support in Chinese, English, French, German, Japanese and Spanish
- Extensive multi-media technical resources to help you
- We investigate all quality concerns to ensure our products perform to the highest standards

If the product does not perform as described on this datasheet, we will offer a refund or replacement. For full details of the Abpromise, please visit <https://www.abcam.com/abpromise> or contact our technical team.

## Terms and conditions

- Guarantee only valid for products bought direct from Abcam or one of our authorized distributors