

## Product datasheet

# Milk Fat Globule 1 overexpression 293T lysate (whole cell) ab94238

[2 Images](#)

### Overview

---

<b>Product name</b>	Milk Fat Globule 1 overexpression 293T lysate (whole cell)
<b>General notes</b>	ab94238 is a 293T cell transfected lysate in which Human Human Milk Fat Globule 1 has been transiently over-expressed using a pCMV-Human Milk Fat Globule 1 plasmid. The lysate is provided in 1 x Sample Buffer.
<b>Tested applications</b>	<b>Suitable for:</b> WB

### Properties

---

<b>Mycoplasma free</b>	Yes
<b>Form</b>	Liquid
<b>Storage instructions</b>	Shipped on dry ice. Upon delivery aliquot and store at -20°C. Avoid freeze / thaw cycles.
<b>Storage buffer</b>	Constituents: 0.01% Bromophenol blue, 2.3% Beta mercaptoethanol, 2% Sodium lauryl sulfate, 0.788% Tris HCl, 10% Glycerol (glycerin, glycerine)
<b>Background</b>	Function: Plays an important role in the maintenance of intestinal epithelial homeostasis and the promotion of mucosal healing. Promotes VEGF-dependent neovascularization (By similarity). Contributes to phagocytic removal of apoptotic cells in many tissues. Specific ligand for the alpha-v/beta-3 and alpha-v/beta-5 receptors. Also binds to phosphatidylserine-enriched cell surfaces in a receptor-independent manner. Zona pellucida-binding protein which may play a role in gamete interaction. Binds specifically to rotavirus and inhibits its replication. Medin is the main constituent of aortic medial amyloid. Tissue specificity: Mammary epithelial cell surfaces and aortic media. Overexpressed in several carcinomas. Similarity: Contains 1 EGF-like domain. Contains 2 F5/8 type C domains. PTM: Medin has a ragged N-terminus with minor species starting at Pro-264 and Gly-273.

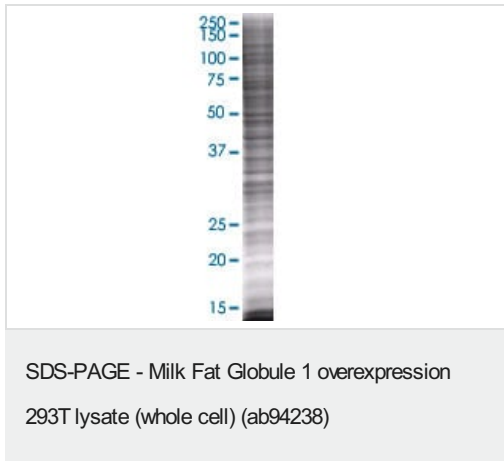
### Applications

---

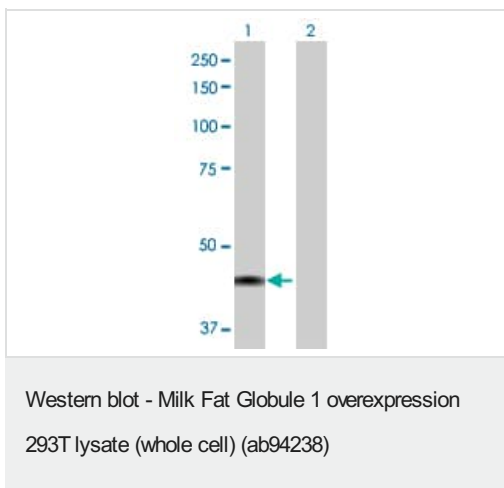
**The Abpromise guarantee** Our **Abpromise guarantee** covers the use of ab94238 in the following tested applications. The application notes include recommended starting dilutions; optimal dilutions/concentrations should be determined by the end user.

Application	Abreviews	Notes
WB		Use at an assay dependent dilution.

## Images



ab94238 at 15µg/lane on an SDS-PAGE gel.



**All lanes** : Anti-Milk Fat Globule 1 antibody ([ab89232](#)) at 1/500 dilution

**Lane 1** : Milk Fat Globule 1 overexpression 293T lysate (whole cell) (ab94238)

**Lane 2** : 293T non-transfected lysate

Lysates/proteins at 25 µg per lane.

### Secondary

**All lanes** : Goat Anti-mouse IgG (H and L) HRP conjugated at 1/2500 dilution

**Please note:** All products are "FOR RESEARCH USE ONLY. NOT FOR USE IN DIAGNOSTIC PROCEDURES"

## Our Abpromise to you: Quality guaranteed and expert technical support

- Replacement or refund for products not performing as stated on the datasheet
- Valid for 12 months from date of delivery
- Response to your inquiry within 24 hours
- We provide support in Chinese, English, French, German, Japanese and Spanish
- Extensive multi-media technical resources to help you
- We investigate all quality concerns to ensure our products perform to the highest standards

If the product does not perform as described on this datasheet, we will offer a refund or replacement. For full details of the Abpromise,

please visit <https://www.abcam.com/abpromise> or contact our technical team.

## **Terms and conditions**

---

- Guarantee only valid for products bought direct from Abcam or one of our authorized distributors