

Product datasheet

MTH1 overexpression 293T lysate (whole cell) ab94036

[2 Images](#)

Overview

Product name	MTH1 overexpression 293T lysate (whole cell)
General notes	ab94036 is a 293T cell transfected lysate in which Human MTH1 has been transiently over-expressed using a pCMV-MTH1 plasmid. The lysate is provided in 1X Sample Buffer.
Tested applications	Suitable for: WB

Properties

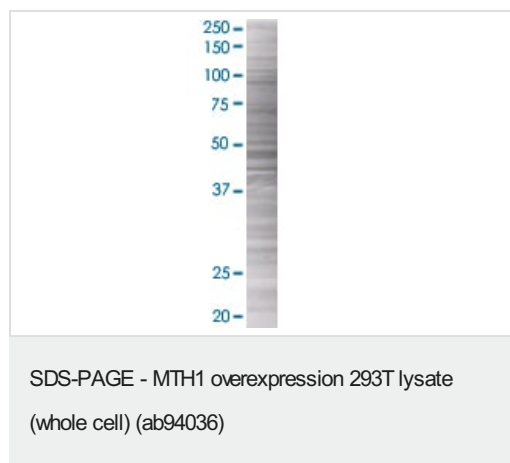
Mycoplasma free	Yes
Form	Liquid
Storage instructions	Shipped on dry ice. Upon delivery aliquot and store at -20°C. Avoid freeze / thaw cycles.
Storage buffer	Constituents: 0.01% Bromophenol blue, 2.3% Beta mercaptoethanol, 2% Sodium lauryl sulfate, 0.788% Tris HCl, 10% Glycerol (glycerin, glycerine)
Background	Function: Antimutagenic. Acts as a sanitizing enzyme for oxidized nucleotide pools, thus suppressing cell dysfunction and death induced by oxidative stress. Hydrolyzes 8-oxo-dGTP, 8-oxo-dATP and 2-OH-dATP, thus preventing misincorporation of oxidized purine nucleoside triphosphates into DNA and subsequently preventing A:T to C:G and G:C to T:A transversions. Able to hydrolyze also the corresponding ribonucleotides, 2-OH-ATP, 8-oxo-GTP and 8-oxo-ATP. Does not play a role in U8 snoRNA decapping activity. Binds U8 snoRNA. Tissue specificity: Widely expressed with highest expression in thymus, testis, embryo and proliferating blood lymphocytes. Similarity: Belongs to the Nudix hydrolase family. Contains 1 nudix hydrolase domain. Developmental stage: In peripheral blood lymphocytes, expressed at much higher levels in proliferating cells than in resting cells. PTM: The N-terminus is blocked.

Applications

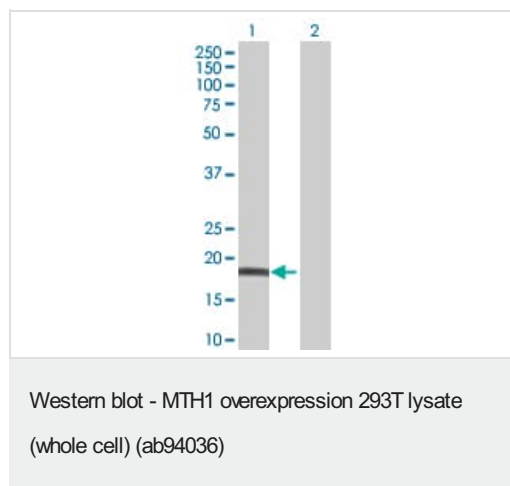
The Abpromise guarantee Our **Abpromise guarantee** covers the use of ab94036 in the following tested applications. The application notes include recommended starting dilutions; optimal dilutions/concentrations should be determined by the end user.

Application	Abreviews	Notes
WB		Use at an assay dependent dilution.

Images



ab94036 at 15µg/lane on an SDS-PAGE gel.



All lanes : Anti-MTH1 antibody (**ab55527**) at 1/500 dilution

Lane 1 : MTH1 overexpression 293T lysate (whole cell) (ab94036)

Lane 2 : 293T non-transfected Lysate

Lysates/proteins at 25 µg per lane.

Secondary

All lanes : Goat Anti-mouse IgG (H and L) HRP conjugated at 1/2500 dilution

Please note: All products are "FOR RESEARCH USE ONLY. NOT FOR USE IN DIAGNOSTIC PROCEDURES"

Our Abpromise to you: Quality guaranteed and expert technical support

- Replacement or refund for products not performing as stated on the datasheet
- Valid for 12 months from date of delivery
- Response to your inquiry within 24 hours
- We provide support in Chinese, English, French, German, Japanese and Spanish
- Extensive multi-media technical resources to help you
- We investigate all quality concerns to ensure our products perform to the highest standards

If the product does not perform as described on this datasheet, we will offer a refund or replacement. For full details of the Abpromise, please visit <https://www.abcam.com/abpromise> or contact our technical team.

Terms and conditions

- Guarantee only valid for products bought direct from Abcam or one of our authorized distributors