

Product datasheet

PAI1 overexpression 293T lysate (whole cell) ab94071

2 Images

Overview

Product name	PAI1 overexpression 293T lysate (whole cell)
General notes	ab94071 is a 293T cell transfected lysate in which Human PAI1 has been transiently over-expressed using a pCMV-PAI1 plasmid. The lysate is provided in 1X Sample Buffer.
Tested applications	Suitable for: WB

Properties

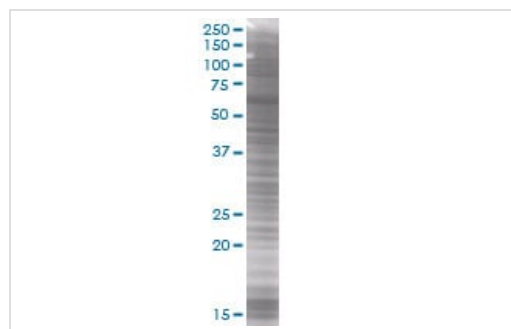
Mycoplasma free	Yes
Form	Liquid
Storage instructions	Shipped on dry ice. Upon delivery aliquot and store at -20°C. Avoid freeze / thaw cycles.
Storage buffer	Constituents: 0.01% Bromophenol blue, 2.3% Beta mercaptoethanol, 2% Sodium lauryl sulfate, 0.788% Tris HCl, 10% Glycerol (glycerin, glycerine)
Background	Disease: Defects in SERPINE1 are the cause of plasminogen activator inhibitor-1 deficiency (PAI-1D) [MIM:613329]. It is a hematologic disorder characterized by increased bleeding after trauma, injury, or surgery. Affected females have menorrhagia. The bleeding defect is due to increased fibrinolysis of fibrin blood clots due to deficiency of plasminogen activator inhibitor-1, which inhibits tissue and urinary activators of plasminogen. Note=High concentrations of SERPINE1 seem to contribute to the development of venous but not arterial occlusions. Function: This inhibitor acts as 'bait' for tissue plasminogen activator, urokinase, and protein C. Its rapid interaction with TPA may function as a major control point in the regulation of fibrinolysis. PTM: Inactivated by proteolytic attack of the urokinase-type (u-PA) and the tissue-type (TPA), cleaving the 369-Arg- -Met-370 bond. Similarity: Belongs to the serpin family. Tissue specificity: Found in plasma and platelets and in endothelial, hepatoma and fibrosarcoma cells.

Applications

The Abpromise guarantee Our **Abpromise guarantee** covers the use of ab94071 in the following tested applications. The application notes include recommended starting dilutions; optimal dilutions/concentrations should be determined by the end user.

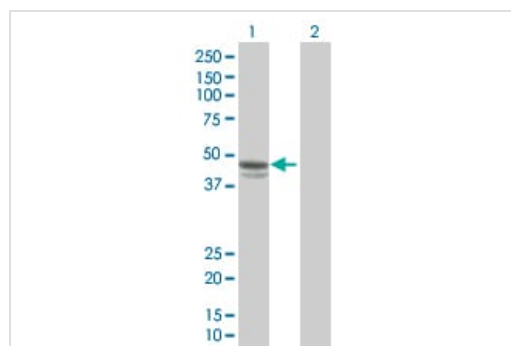
Application	Abreviews	Notes
WB		Use at an assay dependent dilution.

Images



SDS-PAGE - PAI1 overexpression 293T lysate
(whole cell) (ab94071)

ab94071 at 15µg/lane on an SDS-PAGE gel



Western blot - PAI1 overexpression 293T lysate
(whole cell) (ab94071)

All lanes : Anti-PAI1 antibody ([ab89581](#)) at 1/500 dilution

Lane 1 : PAI1 overexpression 293T lysate (whole cell) (ab94071)

Lane 2 : 293T non-transfected lysate

Lysates/proteins at 25 µg per lane.

Secondary

All lanes : Goat Anti-mouse IgG (H and L) HRP conjugated at 1/2500 dilution

Please note: All products are "FOR RESEARCH USE ONLY. NOT FOR USE IN DIAGNOSTIC PROCEDURES"

Our Abpromise to you: Quality guaranteed and expert technical support

- Replacement or refund for products not performing as stated on the datasheet
- Valid for 12 months from date of delivery
- Response to your inquiry within 24 hours
- We provide support in Chinese, English, French, German, Japanese and Spanish
- Extensive multi-media technical resources to help you
- We investigate all quality concerns to ensure our products perform to the highest standards

If the product does not perform as described on this datasheet, we will offer a refund or replacement. For full details of the Abpromise, please visit <https://www.abcam.com/abpromise> or contact our technical team.

Terms and conditions

- Guarantee only valid for products bought direct from Abcam or one of our authorized distributors