

Product datasheet

Rad1 overexpression 293T lysate (whole cell) ab94052

2 Images

Overview

Product name	Rad1 overexpression 293T lysate (whole cell)
General notes	ab94052 is a 293T cell transfected lysate in which Human Rad1 has been transiently over-expressed using a pCMV-Rad1 plasmid. The lysate is provided in 1X Sample Buffer.
Tested applications	Suitable for: WB

Properties

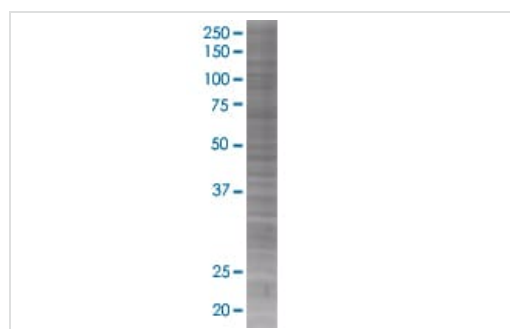
Mycoplasma free	Yes
Form	Liquid
Storage instructions	Shipped on dry ice. Upon delivery aliquot and store at -20°C. Avoid freeze / thaw cycles.
Storage buffer	Constituents: 0.01% Bromophenol blue, 2.3% Beta mercaptoethanol, 2% Sodium lauryl sulfate, 0.788% Tris HCl, 10% Glycerol (glycerin, glycerine)
Background	Function: Component of the 9-1-1 cell-cycle checkpoint response complex that plays a major role in DNA repair. The 9-1-1 complex is recruited to DNA lesion upon damage by the RAD17-replication factor C (RFC) clamp loader complex. Acts then as a sliding clamp platform on DNA for several proteins involved in long-patch base excision repair (LP-BER). The 9-1-1 complex stimulates DNA polymerase beta (POLB) activity by increasing its affinity for the 3'-OH end of the primer-template and stabilizes POLB to those sites where LP-BER proceeds; endonuclease FEN1 cleavage activity on substrates with double, nick, or gap flaps of distinct sequences and lengths; and DNA ligase I (LIG1) on long-patch base excision repair substrates. Isoform 1 possesses 3'->5' double stranded DNA exonuclease activity. Tissue specificity: Expressed in testis, uterus, bladder, spleen, ovaries, lung, brain and muscle (at protein level). Similarity: Belongs to the rad1 family.

Applications

The Abpromise guarantee Our **Abpromise guarantee** covers the use of ab94052 in the following tested applications. The application notes include recommended starting dilutions; optimal dilutions/concentrations should be determined by the end user.

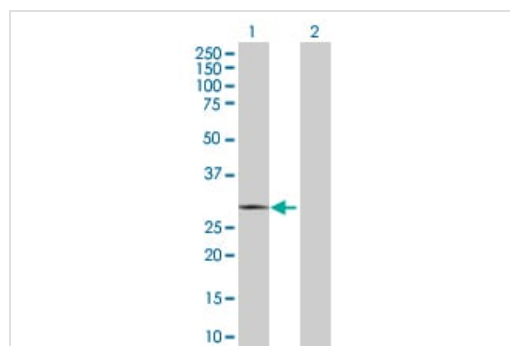
Application	Abreviews	Notes
WB		Use at an assay dependent dilution.

Images



SDS-PAGE - Rad1 overexpression 293T lysate
(whole cell) (ab94052)

ab94052 at 15µg/lane on an SDS-PAGE gel



Western blot - Rad1 overexpression 293T lysate
(whole cell) (ab94052)

All lanes : Anti-Rad1 antibody (**ab76830**) at 1/500 dilution

Lane 1 : Rad1 overexpression 293T lysate (whole cell) (ab94052)

Lane 2 : 293T non-transfected lysate

Lysates/proteins at 25 µg per lane.

Secondary

All lanes : Goat Anti-mouse IgG (H and L) HRP conjugated at
1/2500 dilution

Please note: All products are "FOR RESEARCH USE ONLY. NOT FOR USE IN DIAGNOSTIC PROCEDURES"

Our Abpromise to you: Quality guaranteed and expert technical support

- Replacement or refund for products not performing as stated on the datasheet
- Valid for 12 months from date of delivery
- Response to your inquiry within 24 hours
- We provide support in Chinese, English, French, German, Japanese and Spanish
- Extensive multi-media technical resources to help you
- We investigate all quality concerns to ensure our products perform to the highest standards

If the product does not perform as described on this datasheet, we will offer a refund or replacement. For full details of the Abpromise, please visit <https://www.abcam.com/abpromise> or contact our technical team.

Terms and conditions

- Guarantee only valid for products bought direct from Abcam or one of our authorized distributors