

# F-actin Staining Kit - Blue Fluorescence - Cytopainter ab112124

★★★★★ [4 Abreviews](#) [4 References](#) [2 Images](#)

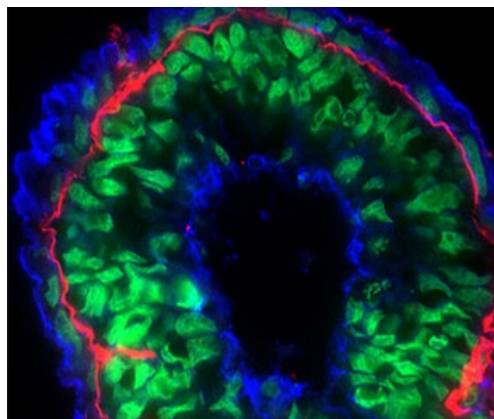
Overview

Product name	F-actin Staining Kit - Blue Fluorescence - Cytopainter
Sample type	Tissue, Adherent cells, Suspension cells
Assay type	Cell-based (qualitative)
Species reactivity	<b>Reacts with:</b> Mammals, Other species
Product overview	<p>F-actin Staining Kit - Blue Fluorescence   Cytopainter (ab112124) fluorescence imaging kits are a set of fluorescence imaging tools for labeling sub-cellular organelles such as lysosomes, mitochondria, and actin filaments. The selective staining of cell compartments provides a powerful method for studying cellular events in a spatial and temporal context.</p> <p>ab112124 is designed to stain F-actins in fixed cells with blue fluorescence. The kit uses a blue fluorescent phalloidin conjugate that is selectively bound to F-actins. The phalloidin conjugate has Ex/Em = 350/450 nm, compatible with DAPI filter set that comes with most of fluorescence microscopes. It is a high-affinity probe for labeling, identifying and quantitating F-actins in formaldehyde-fixed and permeabilized tissue sections, cell cultures or cell-free experiments. ab112124 provides all the essential components with an optimized labeling protocol.</p>
Notes	Store ab112124 desiccated.
Platform	Fluorescence microscope

Properties

Storage instructions      Store at -20°C. Please refer to protocols.

Components	500 tests
Blue Fluorescent Phalloidin Conjugate	1 vial
Labeling Buffer	1 x 50ml



CytoPainter F-actin Staining Kit - Blue Fluorescence (ab112124)

Image: Courtesy of Dr. Shaohua Li, UMDNJ-Robert Wood Johnson Medical School

Sample: mouse embryonic stem cell-differentiated embryoid bodies (EBs)

Preparation:

Fix in 3%PFA in PBS for 30 min at RT

Incubate in 7.5% sucrose-PBS for 3h at RT

Incubate in 15% sucrose-PBS at 4 degree Celsius overnight

Embed the EBs in tissue-Tek OCT compound

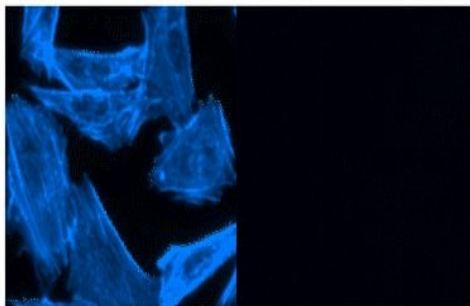
Cut frozen sections to 4-20  $\mu$ m thickness

Primary antibody: Rabbit anti laminin alpha 1, 1:400

Secondary antibody: **Goat polyclonal Secondary Antibody to Rabbit IgG - H&L (Cy5®) (ab97077)**, 1:100

F-actin was stained with CytoPainter blue (ab112124), 1:100

Nuclei were counterstained with SYTO 16



CytoPainter F-actin Labeling Kit - Blue Fluorescence (ab112124)

CytoPainter F-actin Labelling Kit - Blue Fluorescence (ab112124) - CPA cells were fixed with 4.0% formaldehyde in a Costar black 96-well plate.

Left panel: Cells were labelled with CytoPainter F-actin Labelling Kit - Blue for 30 minutes. Right panel: Cells were pre-treated for 10 minutes with phalloidin, prior staining with CytoPainter F-actin Labelling Kit - Blue for 30 minutes.

**Please note:** All products are "FOR RESEARCH USE ONLY. NOT FOR USE IN DIAGNOSTIC PROCEDURES"

### Our Abpromise to you: Quality guaranteed and expert technical support

- Replacement or refund for products not performing as stated on the datasheet
- Valid for 12 months from date of delivery
- Response to your inquiry within 24 hours

- We provide support in Chinese, English, French, German, Japanese and Spanish
- Extensive multi-media technical resources to help you
- We investigate all quality concerns to ensure our products perform to the highest standards

If the product does not perform as described on this datasheet, we will offer a refund or replacement. For full details of the Abpromise, please visit <https://www.abcam.com/abpromise> or contact our technical team.

#### **Terms and conditions**

---

- Guarantee only valid for products bought direct from Abcam or one of our authorized distributors