

Bovine IL-2 ELISA Kit ab193682

1 References 2 Images

Overview

Product name	Bovine IL-2 ELISA Kit				
Detection method	Colorimetric				
Precision	Intra-assay				
	Sample	n	Mean	SD	CV%
	Overall				< 10%
	Inter-assay				
	Sample	n	Mean	SD	CV%
	Overall				< 12%
Sample type	Cell culture supernatant, Serum, Plasma				
Assay type	Sandwich (quantitative)				
Sensitivity	0.2 ng/ml				
Range	0.2 ng/ml - 200 ng/ml				
Recovery	Sample specific recovery				
	Sample type		Average %	Range	
	Cell culture supernatant		133.7	126% - 142%	
	Serum		194.8	125% - 145%	
	Plasma		102.1	90% - 111%	
Assay duration	Multiple steps standard assay				
Species reactivity	Reacts with: Cow				
Product overview	Abcam's IL-2 Bovine ELISA Kit (ab193682) is an in vitro enzyme-linked immunosorbent assay for the quantitative measurement of bovine IL-2 in serum, plasma, and cell culture supernatants.				

This assay employs an antibody specific for bovine IL-2 coated on a 96-well plate. Standards and samples are pipetted into the wells and the immobilized antibody captures IL-2 present in the

samples. The wells are washed and biotinylated anti-bovine IL-2 antibody is added. After washing away any unbound biotinylated antibody, an HRP-conjugated streptavidin is pipetted to the wells. After incubation, the wells are again washed, followed by the addition of a TMB substrate solution to the wells. Color will develop in proportion to the amount of IL-2 bound in each well. Addition of the Stop Solution will change the color from blue to yellow, and the intensity of the color is measured at 450 nm.

Platform Pre-coated microplate (12 x 8 well strips)

Properties

Storage instructions Store at -20°C. Please refer to protocols.

Components	1 x 96 tests
20X Wash Buffer	1 x 25ml
5X Assay Diluent B	1 x 15ml
600X HRP-Streptavidin Concentrate	1 x 200µl
Assay Diluent C	1 x 30ml
Biotinylated Bovine IL-2 Detection Antibody	2 vials
Bovine IL-2 Standards (lyophilized)	2 vials
Pre-coated bovine IL-2 Microplate (12 strips x 8 wells)	1 unit
Stop Solution	1 x 8ml
TMB One-Step Substrate Reagent	1 x 12ml

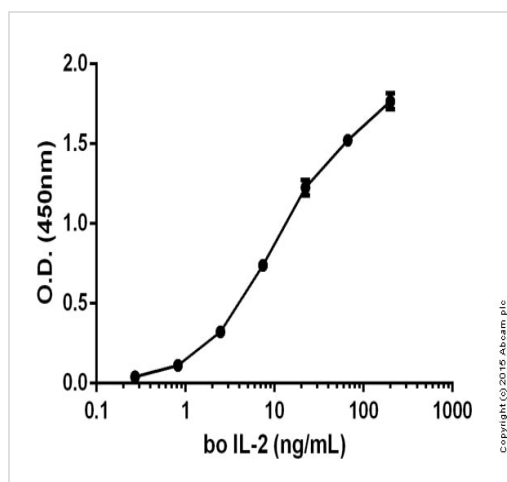
Function Produced by T-cells in response to antigenic or mitogenic stimulation, this protein is required for T-cell proliferation and other activities crucial to regulation of the immune response. Can stimulate B-cells, monocytes, lymphokine-activated killer cells, natural killer cells, and glioma cells.

Involvement in disease Note=A chromosomal aberration involving IL2 is found in a form of T-cell acute lymphoblastic leukemia (T-ALL). Translocation t(4;16)(q26;p13) with involves TNFRSF17.

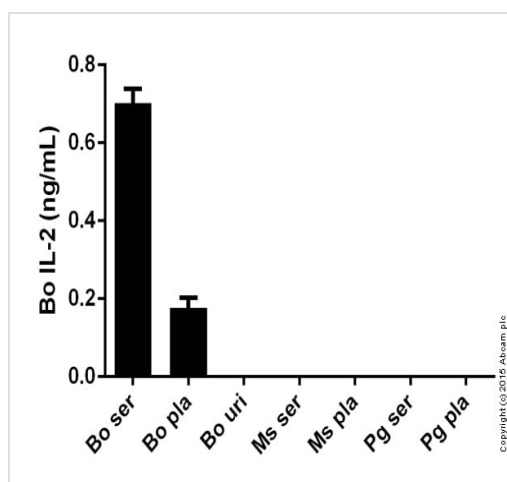
Sequence similarities Belongs to the IL-2 family.

Cellular localization Secreted.

Images



Sandwich ELISA -ab193682 Bo IL-2



Sandwich ELISA - ab193682 Bovine IL-2

Please note: All products are "FOR RESEARCH USE ONLY. NOT FOR USE IN DIAGNOSTIC PROCEDURES"

Our Abpromise to you: Quality guaranteed and expert technical support

- Replacement or refund for products not performing as stated on the datasheet
- Valid for 12 months from date of delivery
- Response to your inquiry within 24 hours
- We provide support in Chinese, English, French, German, Japanese and Spanish
- Extensive multi-media technical resources to help you
- We investigate all quality concerns to ensure our products perform to the highest standards

If the product does not perform as described on this datasheet, we will offer a refund or replacement. For full details of the Abpromise, please visit <https://www.abcam.com/abpromise> or contact our technical team.

Terms and conditions

- Guarantee only valid for products bought direct from Abcam or one of our authorized distributors