

Product datasheet

ERK1 (phospho T202 + Y204) + ERK2 (phospho T185 + Y187) + Total ERK1/2 ELISA Kit ab126445

[5 References](#) [3 Images](#)

Overview

Product name	ERK1 (phospho T202 + Y204) + ERK2 (phospho T185 + Y187) + Total ERK1/2 ELISA Kit
Detection method	Colorimetric
Sample type	Cell Lysate
Assay type	Semi-quantitative
Assay time	5h 00m
Assay duration	Multiple steps standard assay
Species reactivity	Reacts with: Mouse, Rat, Human
Product overview	<p>ab126445 is a very rapid, convenient and sensitive assay kit that can monitor the activation or function of important biological pathways in cell lysates. By determining phosphorylated Erk1/2 protein in your experimental model system, you can verify pathway activation in your cell lysates. You can simultaneously measure numerous different cell lysates without spending excess time and effort in performing a Western Blot analysis.</p> <p>This Sandwich ELISA kit is an in vitro enzyme-linked immunosorbent assay for the measurement of phospho-Erk1 (T202/Y204)/Erk2 (T185/Y187) and total Erk1/2 in Human, Mouse and Rat cell lysates (help normalize the results of phospho-Erk1/2 from different cell lysate being compared). A total Erk1/2 antibody has been coated onto a 96-well plate. Samples are pipetted into the wells and Erk1/2 present in a sample is bound to the wells by the immobilized antibody. The wells are washed and anti-phospho-Erk1 (T202/Y204)/Erk2 (T185/Y187) or anti-total-Erk1/2 is used to detect phosphorylated or total Erk1/2. After washing away unbound antibody, HRP-conjugated anti-rabbit IgG is pipetted to the wells. The wells are again washed, a TMB substrate solution is added to the wells and color develops in proportion to the amount of Erk1 (T202/Y204)/Erk2 (T185/Y187) or total Erk1/2 bound. The Stop Solution changes the color from blue to yellow, and the intensity of the color is measured at 450 nm.</p>
Notes	<p>Abcam has not and does not intend to apply for the REACH Authorisation of customers' uses of products that contain European Authorisation list (Annex XIV) substances.</p> <p>It is the responsibility of our customers to check the necessity of application of REACH Authorisation, and any other relevant authorisations, for their intended uses.</p>
Platform	Microplate

Properties

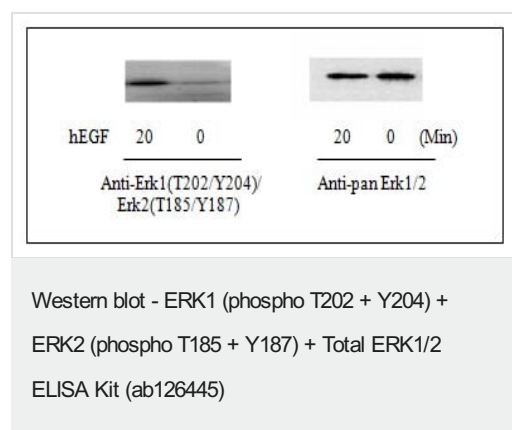
Properties

Storage instructions Store at -20°C. Please refer to protocols.

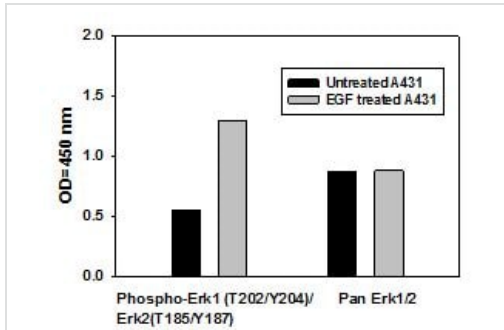
Components	1 x 96 tests
20X Wash Buffer	1 x 25ml
2X Cell Lysis Buffer	1 x 5ml
5X Assay Diluent	1 x 15ml
Detection Antibody Erk1(T202/Y204)/Erk2(T185/Y187)	1 vial
Detection Antibody Erk1/2	1 vial
Erk1/2 Microplate (12 strips x 8 wells) coated with anti-pan Erk1/2 antibody	1 unit
500X HRP-conjugated anti-rabbit IgG	1 x 25µl
HRP-Streptavidin Concentrate (Item G)	1 x 200µl
Positive Control: lyophilized powder from A431 cell lysate	1 vial
Stop Solution	1 x 8ml
TMB One-Step Substrate Reagent	1 x 12ml

Cellular localization ERK2: Nucleus.

Images

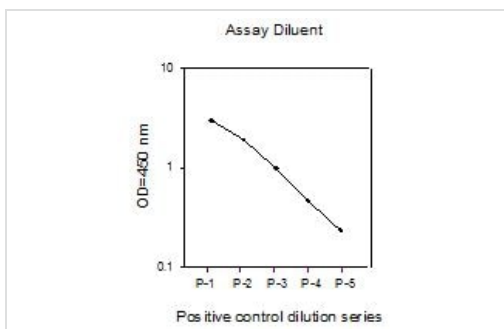


A431 cells were treated or untreated with 100 ng/ml recombinant Human EGF for 20 min. Cell lysates were analyzed using Western Blot.



Sandwich ELISA - ERK1 (phospho T202 + Y204) + ERK2 (phospho T185 + Y187) + Total ERK1/2 ELISA Kit (ab126445)

A431 cells were treated or untreated with 100 ng/ml recombinant Human EGF for 20 min. Cell lysates were analyzed using ab126445.



Sandwich ELISA - ERK1 (phospho T202 + Y204) + ERK2 (phospho T185 + Y187) + Total ERK1/2 ELISA Kit (ab126445)

A431 cells were treated with recombinant Human EGF at 37°C for 20 min. Solubilize cells at 4×10^7 cells/ml in Cell Lysate Buffer. Serial dilutions of lysates were analyzed using ab126445.

Please note: All products are "FOR RESEARCH USE ONLY. NOT FOR USE IN DIAGNOSTIC PROCEDURES"

Our Abpromise to you: Quality guaranteed and expert technical support

- Replacement or refund for products not performing as stated on the datasheet
- Valid for 12 months from date of delivery
- Response to your inquiry within 24 hours
- We provide support in Chinese, English, French, German, Japanese and Spanish
- Extensive multi-media technical resources to help you
- We investigate all quality concerns to ensure our products perform to the highest standards

If the product does not perform as described on this datasheet, we will offer a refund or replacement. For full details of the Abpromise,

please visit <https://www.abcam.com/abpromise> or contact our technical team.

Terms and conditions

- Guarantee only valid for products bought direct from Abcam or one of our authorized distributors