



Product datasheet

# Human alpha 2 Macroglobulin ELISA Kit ab108888

[7 References](#)   [2 Images](#)

Overview

Product name	Human alpha 2 Macroglobulin ELISA Kit				
Detection method	Colorimetric				
Precision	Intra-assay				
	Sample	n	Mean	SD	CV%
	Overall				5.9%
	Inter-assay				
	Sample	n	Mean	SD	CV%
	Overall				10%
Sample type	Serum, Plasma				
Assay type	Competitive				
Sensitivity	= 1.1 µg/ml				
Range	1.25 µg/ml - 40 µg/ml				
Recovery	97 %				
Assay time	3h 00m				
Assay duration	Multiple steps standard assay				
Species reactivity	<b>Reacts with:</b> Human				
Product overview	Abcam's alpha 2 Macroglobulin Human <i>in vitro</i> competitive ELISA (Enzyme-Linked Immunosorbent Assay) kit is designed for the quantitative measurement of alpha 2 Macroglobulin in plasma and serum.				

An alpha 2 Macroglobulin specific antibody has been precoated onto 96-well plates and blocked. Standards or test samples are added to the wells and subsequently biotinylated alpha 2 Macroglobulin is added and then followed by washing with wash buffer. Streptavidin-Peroxidase Conjugate is added and unbound conjugates are washed away with wash buffer. TMB is then used to visualize Streptavidin-Peroxidase enzymatic reaction. TMB is catalyzed by Streptavidin-Peroxidase to produce a blue color product that changes into yellow after adding acidic stop solution. The density of yellow coloration is inversely proportional to the amount of alpha 2 Macroglobulin captured in plate.

**The entire kit may be stored at -20°C for long term storage before reconstitution - Avoid repeated freeze-thaw cycles.**

**Platform** Microplate

## Properties

**Storage instructions** Store at -20°C. Please refer to protocols.

Components	1 x 96 tests
100X Streptavidin-Peroxidase Conjugate	1 x 80µl
10X Diluent M Concentrate	1 x 30ml
20X Wash Buffer Concentrate	1 x 30ml
1X Biotinylated alpha 2 Macroglobulin (Lyophilized)	1 vial
alpha 2 Macroglobulin Microplate (12 x 8 well strips)	1 unit
alpha 2 Macroglobulin Standard	1 vial
Chromogen Substrate	1 x 7ml
Sealing Tapes	3 units
Stop Solution	1 x 11ml

**Function** Is able to inhibit all four classes of proteinases by a unique 'trapping' mechanism. This protein has a peptide stretch, called the 'bait region' which contains specific cleavage sites for different proteinases. When a proteinase cleaves the bait region, a conformational change is induced in the protein which traps the proteinase. The entrapped enzyme remains active against low molecular weight substrates (activity against high molecular weight substrates is greatly reduced). Following cleavage in the bait region a thioester bond is hydrolyzed and mediates the covalent binding of the protein to the proteinase.

**Tissue specificity** Secreted in plasma.

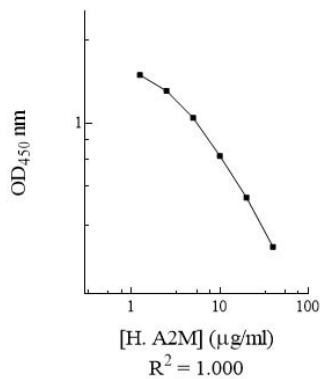
**Sequence similarities** Belongs to the protease inhibitor I39 (alpha-2-macroglobulin) family.

**Developmental stage** Contrary to the rat protein, which is an acute phase protein, this protein is always present at high levels in circulation.

**Cellular localization** Secreted.

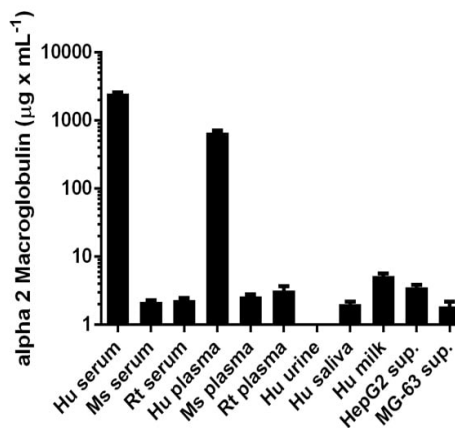
## Images

Human A2M Standard Curve



Standard curve: mean of duplicates (+/- SD) with background reads subtracted

Competitive ELISA - alpha 2 Macroglobulin Human  
ELISA Kit (ab108888)



Alpha 2 Macroglobulin measured in biological fluids and cell culture supernatant showing quantity (ug) per mL of tested sample. Human serum diluted 400-1600 fold. Human plasma diluted 80-320 fold. Other samples undiluted.

Competitive ELISA - alpha 2 Macroglobulin Human  
ELISA Kit (ab108888)

**Please note:** All products are "FOR RESEARCH USE ONLY. NOT FOR USE IN DIAGNOSTIC PROCEDURES"

### Our Abpromise to you: Quality guaranteed and expert technical support

- Replacement or refund for products not performing as stated on the datasheet
- Valid for 12 months from date of delivery
- Response to your inquiry within 24 hours
- We provide support in Chinese, English, French, German, Japanese and Spanish
- Extensive multi-media technical resources to help you
- We investigate all quality concerns to ensure our products perform to the highest standards

If the product does not perform as described on this datasheet, we will offer a refund or replacement. For full details of the Abpromise, please visit <https://www.abcam.com/abpromise> or contact our technical team.

#### **Terms and conditions**

---

- Guarantee only valid for products bought direct from Abcam or one of our authorized distributors