

# Human Cardiotrophin 1 ELISA Kit (CTF1) ab99996

[2 Images](#)

### Overview

<b>Product name</b>	Human Cardiotrophin 1 ELISA Kit (CTF1)
<b>Detection method</b>	Colorimetric
<b>Sample type</b>	Cell culture supernatant, Plasma
<b>Assay type</b>	Sandwich (quantitative)
<b>Sensitivity</b>	< 20 pg/ml
<b>Range</b>	16.46 pg/ml - 12000 pg/ml
<b>Recovery</b>	100 %

Sample specific recovery

Sample type	Average %	Range
Cell culture supernatant	98.2	76% - 112%
Plasma	101.2	70% - 134%

**Assay duration** Multiple steps standard assay

**Species reactivity** **Reacts with:** Human

### Product overview

Abcam's Cardiotrophin 1 (CTF1) Human ELISA (Enzyme-Linked Immunosorbent Assay) kit is an *in vitro* enzyme-linked immunosorbent assay for the quantitative measurement of Human Cardiotrophin 1 in plasma and cell culture supernatants. (Human Cardiotrophin 1 concentration is pretty low in normal plasma, it may not be detected in this assay).

This assay employs an antibody specific for Human Cardiotrophin 1 coated on a 96-well plate. Standards and samples are pipetted into the wells and Cardiotrophin 1 present in a sample is bound to the wells by the immobilized antibody. The wells are washed and biotinylated anti-Human Cardiotrophin 1 antibody is added. After washing away unbound biotinylated antibody, HRP-conjugated streptavidin is pipetted to the wells. The wells are again washed, a TMB substrate solution is added to the wells and color develops in proportion to the amount of Cardiotrophin 1 bound. The Stop Solution changes the color from blue to yellow, and the intensity of the color is measured at 450 nm.

We have not been able to detect the endogenous Human Cardiotrophin 1 in normal serum with ab99996, only in serum spiked with Human Cardiotrophin 1.

**Notes** Optimization may be required with urine samples.

**Platform** Microplate

## Properties

---

**Storage instructions** Store at -20°C. Please refer to protocols.

Components	1 x 96 tests
20X Wash Buffer	1 x 25ml
5X Assay Diluent	1 x 15ml
600X HRP-Streptavidin Concentrate	1 x 200µl
Biotinylated anti-Human Cardiotrophin 1	2 vials
Cardiotrophin 1 Microplate (12 x 8 wells)	1 unit
Recombinant Cardiotrophin 1 Human Standard (lyophilized)	2 vials
Stop Solution	1 x 8ml
TMB One-Step Substrate Reagent	1 x 12ml

**Function** Induces cardiac myocyte hypertrophy in vitro. Binds to and activates the ILST/gp130 receptor.

**Tissue specificity** Highly expressed in heart, skeletal muscle, prostate and ovary. Lower levels in lung, kidney, pancreas, thymus, testis and small intestine. Little or no expression in brain, placenta, liver, spleen, colon or peripheral blood leukocytes.

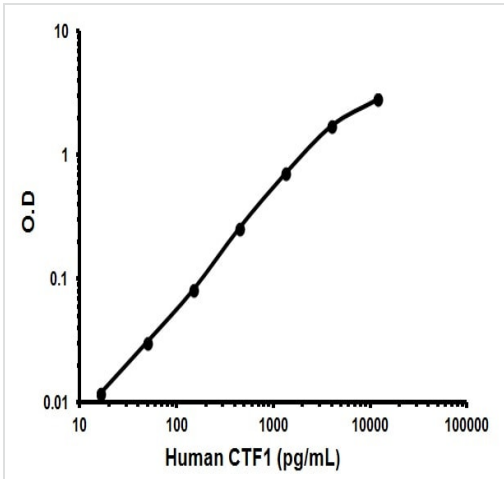
**Sequence similarities** Belongs to the IL-6 superfamily.

**Cellular localization** Secreted.

---

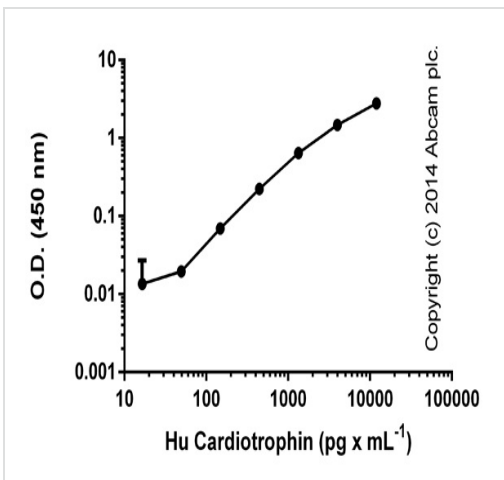
## Images

---



Representative Standard Curve using ab99996.

Typical Standard Curve



Standard curve with background signal subtracted (duplicates; +/- SD).

ELISA: Cardiostrophin 1 (CTF1) Human ELISA Kit (ab99996)

**Please note:** All products are "FOR RESEARCH USE ONLY. NOT FOR USE IN DIAGNOSTIC PROCEDURES"

### Our Abpromise to you: Quality guaranteed and expert technical support

- Replacement or refund for products not performing as stated on the datasheet
- Valid for 12 months from date of delivery
- Response to your inquiry within 24 hours
- We provide support in Chinese, English, French, German, Japanese and Spanish
- Extensive multi-media technical resources to help you
- We investigate all quality concerns to ensure our products perform to the highest standards

If the product does not perform as described on this datasheet, we will offer a refund or replacement. For full details of the Abpromise, please visit <https://www.abcam.com/abpromise> or contact our technical team.

## Terms and conditions

---

- Guarantee only valid for products bought direct from Abcam or one of our authorized distributors