

Human Cathepsin D ELISA Kit ab119586

[6 References](#) [2 Images](#)

Overview

Product name	Human Cathepsin D ELISA Kit
Detection method	Colorimetric
Sample type	Cell culture supernatant, Serum, Plasma, Other biological fluids, Tissue Extracts
Assay type	Sandwich (quantitative)
Sensitivity	< 10 pg/ml
Range	156 pg/ml - 10000 pg/ml
Assay duration	Multiple steps standard assay
Species reactivity	Reacts with: Human
Product overview	<p>Abcam's Human Cathepsin D <i>in vitro</i> ELISA (Enzyme-Linked Immunosorbent Assay) kit is designed for the accurate quantitative measurement of Human Cathepsin D in cell culture supernatants, serum and plasma (heparin, EDTA).</p> <p>A Cathepsin D specific mouse monoclonal antibody has been precoated onto 96-well plates. Standards and test samples are added to the wells and incubated. A biotinylated detection polyclonal antibody from goat, specific for Cathepsin D is then added followed by washing with PBS or TBS buffer. Avidin-Biotin-Peroxidase Complex is added and unbound conjugates are washed away with PBS or TBS buffer. TMB is then used to visualize the HRP enzymatic reaction. TMB is catalyzed by HRP to produce a blue color product that changes into yellow after adding acidic stop solution. The density of yellow coloration is directly proportional to the Human Cathepsin D amount of sample captured in plate.</p>
Platform	Microplate

Properties

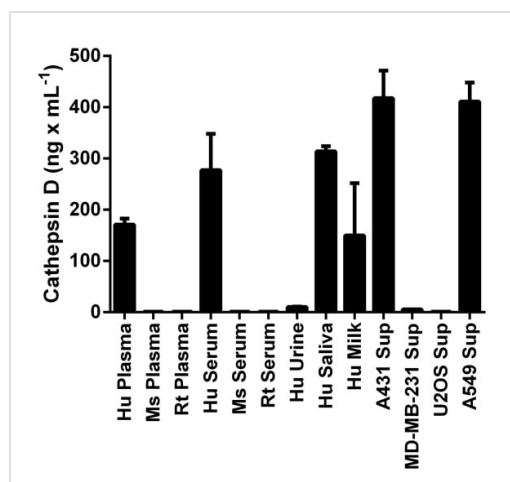
Storage instructions Store at -20°C. Please refer to protocols.

Components	Identifier	1 x 96 tests	1 x 96 tests
ABC Diluent Buffer	Blue Cap	1 x 12ml	1 x 12ml
Antibody Diluent Buffer	Green Cap	1 x 12ml	1 x 12ml
Anti-Human Cathepsin D antibody Microplate (12 x 8 wells)		1 unit	1 unit

Components	Identifier	1 x 96 tests	1 x 96 tests
Avidin-Biotin-Peroxidase Complex (ABC)		1 x 100µl	1 x 100µl
Biotinylated anti-Human Cathepsin D antibody		1 x 100µl	1 x 100µl
Lyophilized recombinant Human Cathepsin D standard		2 x 10ng	2 x 10ng
Plate Seal		1 x 4 units	1 x 4 units
Sample Diluent Buffer	Green Cap	1 x 30ml	1 x 30ml
TMB Color Developing Agent	Amber Bottle	1 x 10ml	1 x 10ml
TMB Stop Solution	Yellow Cap	1 x 10ml	1 x 10ml
Wash Buffer (25X)		1 x 20ml	1 x 20ml

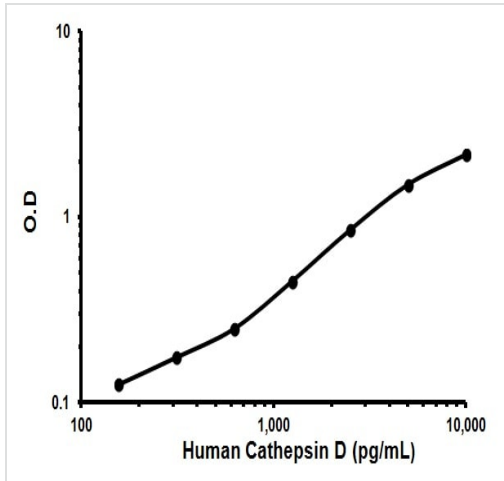
Function	Acid protease active in intracellular protein breakdown. Involved in the pathogenesis of several diseases such as breast cancer and possibly Alzheimer disease.
Tissue specificity	Expressed in the aorta extracellular space (at protein level).
Involvement in disease	Ceroid lipofuscinosis, neuronal, 10
Sequence similarities	Belongs to the peptidase A1 family. Contains 1 peptidase A1 domain.
Post-translational modifications	N- and O-glycosylated.
Cellular localization	Lysosome. Melanosome. Secreted, extracellular space. Identified by mass spectrometry in melanosome fractions from stage I to stage IV. In aortic samples, detected as an extracellular protein loosely bound to the matrix (PubMed:20551380).

Images



Cathepsin D measured in biological fluids and cell culture medium with background signal subtracted (duplicates +/- SD). We recommend to test the human plasma, serum and urine samples in the range of 1:20-1:500, the saliva in the range of 1:100-1:1000 and the cell culture supernatants 1:1-1:1000.

Sandwich ELISA - Cathepsin D Human ELISA Kit
(ab119586)



Representative Standard Curve using ab119586.

Typical Standard Curve

Please note: All products are "FOR RESEARCH USE ONLY. NOT FOR USE IN DIAGNOSTIC PROCEDURES"

Our Abpromise to you: Quality guaranteed and expert technical support

- Replacement or refund for products not performing as stated on the datasheet
- Valid for 12 months from date of delivery
- Response to your inquiry within 24 hours
- We provide support in Chinese, English, French, German, Japanese and Spanish
- Extensive multi-media technical resources to help you
- We investigate all quality concerns to ensure our products perform to the highest standards

If the product does not perform as described on this datasheet, we will offer a refund or replacement. For full details of the Abpromise, please visit <https://www.abcam.com/abpromise> or contact our technical team.

Terms and conditions

- Guarantee only valid for products bought direct from Abcam or one of our authorized distributors