

Human DKK1 ELISA Kit (Dickkopf-1) ab100501

[4 References](#) [2 Images](#)

Overview

Product name	Human DKK1 ELISA Kit (Dickkopf-1)
Detection method	Colorimetric
Sample type	Cell culture supernatant, Serum, Plasma
Assay type	Sandwich (quantitative)
Sensitivity	< 100 pg/ml
Range	122.9 pg/ml - 30000 pg/ml
Recovery	90 %

Sample specific recovery

Sample type	Average %	Range
Cell culture supernatant	108.3	93% - 123%
Serum	92.3	62% - 130%
Plasma	72.8	59% - 110%

Assay duration Multiple steps standard assay

Species reactivity **Reacts with:** Human

Product overview Abcam's DKK1 (Dickkopf-1) Human ELISA (Enzyme-Linked Immunosorbent Assay) kit is an *in vitro* enzyme-linked immunosorbent assay for the quantitative measurement of Human DKK1 in serum, plasma, and cell culture supernatants.

This assay employs an antibody specific for Human DKK1 coated on a 96-well plate. Standards and samples are pipetted into the wells and DKK1 present in a sample is bound to the wells by the immobilized antibody. The wells are washed and biotinylated anti-Human DKK1 antibody is added. After washing away unbound biotinylated antibody, HRP-conjugated streptavidin is pipetted to the wells. The wells are again washed, a TMB substrate solution is added to the wells and color develops in proportion to the amount of DKK1 bound. The Stop Solution changes the color from blue to yellow, and the intensity of the color is measured at 450 nm.

Notes Optimization may be required with urine samples.

Platform Microplate

Properties

Storage instructions

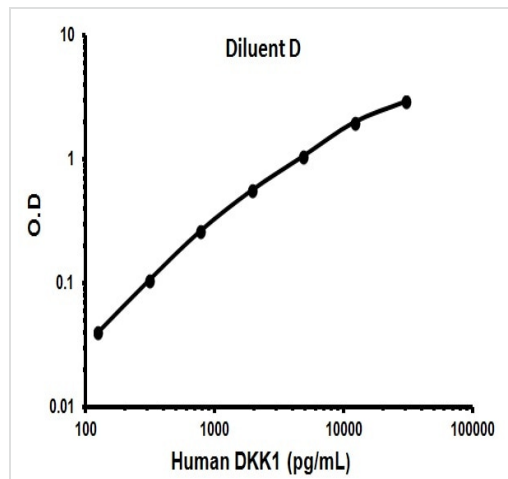
Store at -20°C. Please refer to protocols.

Components	1 x 96 tests
20X Wash Buffer	1 x 25ml
5X Assay Diluent B	1 x 15ml
5X Assay Diluent D	1 x 15ml
700X HRP-Streptavidin Concentrate	1 x 200µl
Biotinylated anti-Human DKK1	2 vials
DKK1 Microplate (12 x 8 wells)	1 unit
Recombinant Human DKK1 Standard (lyophilized)	2 vials
Stop Solution	1 x 8ml
TMB One-Step Substrate Reagent	1 x 12ml

Relevance

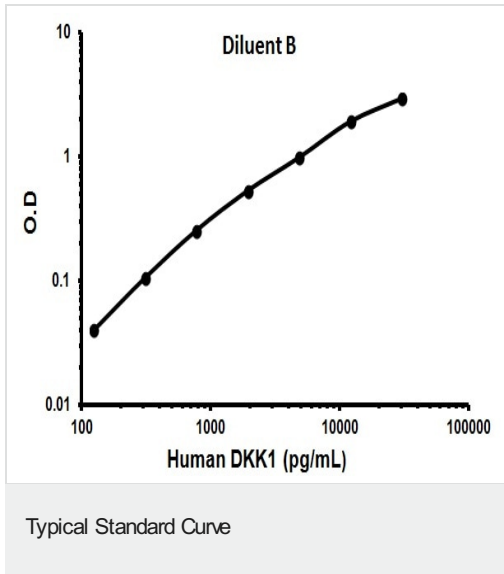
DKK1 is an inhibitor of the Wnt signaling pathway. Elevated levels of DKK1 in bone marrow plasma and peripheral blood is associated with the presence of osteolytic bone lesions in patients with multiple myeloma.

Images



Representative Standard Curve using ab100501.

Typical Standard Curve



Representative Standard Curve using ab100501.

Please note: All products are "FOR RESEARCH USE ONLY. NOT FOR USE IN DIAGNOSTIC PROCEDURES"

Our Abpromise to you: Quality guaranteed and expert technical support

- Replacement or refund for products not performing as stated on the datasheet
- Valid for 12 months from date of delivery
- Response to your inquiry within 24 hours
- We provide support in Chinese, English, French, German, Japanese and Spanish
- Extensive multi-media technical resources to help you
- We investigate all quality concerns to ensure our products perform to the highest standards

If the product does not perform as described on this datasheet, we will offer a refund or replacement. For full details of the Abpromise, please visit <https://www.abcam.com/abpromise> or contact our technical team.

Terms and conditions

- Guarantee only valid for products bought direct from Abcam or one of our authorized distributors