

# Human DKK3 ELISA Kit (Dickkopf-3) ab100502

[2 References](#) [2 Images](#)

### Overview

Product name	Human DKK3 ELISA Kit (Dickkopf-3)
Detection method	Colorimetric
Sample type	Cell culture supernatant, Serum, Plasma
Assay type	Sandwich (quantitative)
Sensitivity	< 3 pg/ml
Range	2.74 pg/ml - 2000 pg/ml
Recovery	> 85 %

Sample specific recovery

Sample type	Average %	Range
Cell culture supernatant	96.23	85% - 105%
Serum	86.69	77% - 96%
Plasma	89.24	80% - 98%

**Assay duration** Multiple steps standard assay

**Species reactivity** **Reacts with:** Human

**Product overview** Abcam's DKK3 (Dickkopf-3) Human ELISA (Enzyme-Linked Immunosorbent Assay) kit is an *in vitro* enzyme-linked immunosorbent assay for the quantitative measurement of Human DKK3 in serum, plasma, and cell culture supernatants.

This assay employs an antibody specific for Human DKK3 coated on a 96-well plate. Standards and samples are pipetted into the wells and DKK3 present in a sample is bound to the wells by the immobilized antibody. The wells are washed and biotinylated anti-Human DKK3 antibody is added. After washing away unbound biotinylated antibody, HRP-conjugated streptavidin is pipetted to the wells. The wells are again washed, a TMB substrate solution is added to the wells and color develops in proportion to the amount of DKK3 bound. The Stop Solution changes the color from blue to yellow, and the intensity of the color is measured at 450 nm.

**Notes** Optimisation may be required with urine samples.

**Platform** Microplate

## Properties

### Storage instructions

Store at -20°C. Please refer to protocols.

Components	1 x 96 tests
20X Wash Buffer	1 x 25ml
300X HRP-Streptavidin Concentrate	1 x 200µl
5X Assay Diluent B	1 x 15ml
Assay Diluent A	1 x 30ml
Biotinylated anti-Human DKK3	2 vials
DKK3 Microplate (12 x 8 well strips)	1 unit
Recombinant Human DKK3 Standard (lyophilized)	2 vials
Stop Solution	1 x 8ml
TMB One-Step Substrate Reagent	1 x 12ml

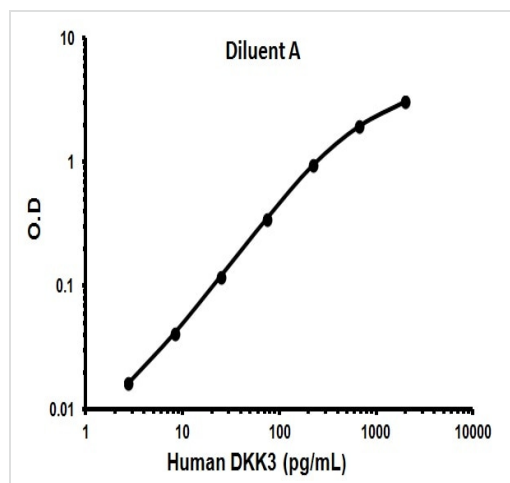
### Relevance

DKK3, like DKK1, DKK2, and DKK4, possesses an N terminal signal peptide and 2 conserved cysteine rich domains, which are separated by a linker region and contain 10 cysteine residues each. The second cysteine region has a putative lipid binding function that may facilitate WNT/DKK interactions at the plasma membrane. The linker region contains 50 to 55 amino acids in DKK1, DKK2, and DKK4, whereas in DKK3 it contains only 12 amino acids. All DKKs have several potential sites for cleavage by furin type proteases.

### Cellular localization

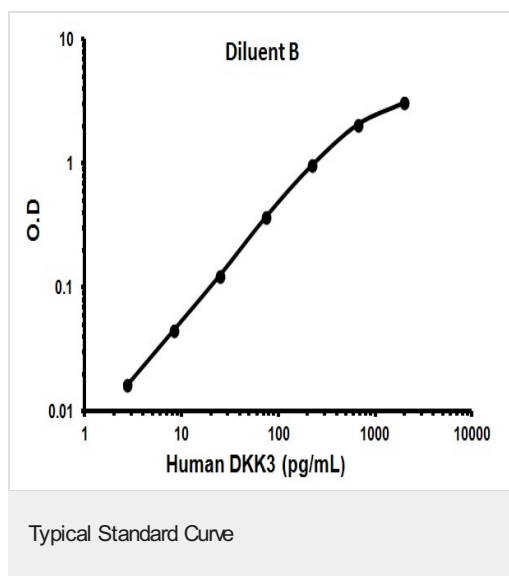
Secreted

## Images



Typical Standard Curve

Representative Standard Curve using ab100502.



Representative Standard Curve using ab100502.

**Please note:** All products are "FOR RESEARCH USE ONLY. NOT FOR USE IN DIAGNOSTIC PROCEDURES"

#### Our Abpromise to you: Quality guaranteed and expert technical support

---

- Replacement or refund for products not performing as stated on the datasheet
- Valid for 12 months from date of delivery
- Response to your inquiry within 24 hours
- We provide support in Chinese, English, French, German, Japanese and Spanish
- Extensive multi-media technical resources to help you
- We investigate all quality concerns to ensure our products perform to the highest standards

If the product does not perform as described on this datasheet, we will offer a refund or replacement. For full details of the Abpromise, please visit <https://www.abcam.com/abpromise> or contact our technical team.

#### Terms and conditions

---

- Guarantee only valid for products bought direct from Abcam or one of our authorized distributors