

Human Exodus 2 ELISA Kit (CCL21) ab193759

SimpleStep ELISA

3 References 5 Images

Overview

Product name Human Exodus 2 ELISA Kit (CCL21)

Detection method Colorimetric

Precision Intra-assay

Sample	n	Mean	SD	CV%
Overall	3			3.4%

Inter-assay

Sample	n	Mean	SD	CV%
Overall	3			5.5%

Sample type Cell culture supernatant, Serum, Hep Plasma, Cit plasma

Assay type Sandwich (quantitative)

Sensitivity 3.8 pg/ml

Range 9.4 pg/ml - 600 pg/ml

Recovery Sample specific recovery

Sample type	Average %	Range
Serum	104	102% - 106%
Cell culture media	99	94% - 105%
Hep Plasma	102	99% - 106%
Cit plasma	99	93% - 106%

Assay time 1h 30m

Assay duration One step assay

Species reactivity Reacts with: Human

Product overview

Human Exodus 2 ELISA Kit (CCL21) (ab193759) is a single-wash 90 min sandwich ELISA designed for the quantitative measurement of Exodus 2 (CCL21) protein in cell culture supernatant, cit plasma, hep plasma, and serum. It uses our proprietary SimpleStep ELISA® technology. Quantitate Human Exodus 2 (CCL21) with 3.8 pg/ml sensitivity.

SimpleStep ELISA® technology employs capture antibodies conjugated to an affinity tag that is recognized by the monoclonal antibody used to coat our SimpleStep ELISA® plates. This approach to sandwich ELISA allows the formation of the antibody-analyte sandwich complex in a single step, significantly reducing assay time. See the SimpleStep ELISA® protocol summary in the image section for further details. Our SimpleStep ELISA® technology provides several benefits:

- Single-wash protocol reduces assay time to 90 minutes or less
- High sensitivity, specificity and reproducibility from superior antibodies
- Fully validated in biological samples
- 96-wells plate breakable into 12 x 8 wells strips

A 384-well SimpleStep ELISA® microplate ([ab203359](#)) is available to use as an alternative to the 96-well microplate provided with SimpleStep ELISA® kits.

Notes

Exodus 2 (CCL 21) is a small cytokine in the CC chemokine family, and is involved in inhibition of hemopoiesis and stimulation of chemotaxis. It interacts with atypical chemokine receptor ACKR4 and recruits beta-arrestin to ACKR4.

Platform

Microplate

Properties

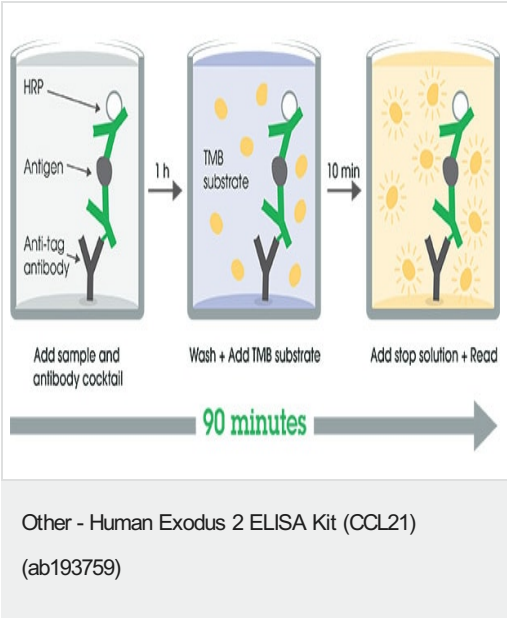
Storage instructions

Store at +4°C. Please refer to protocols.

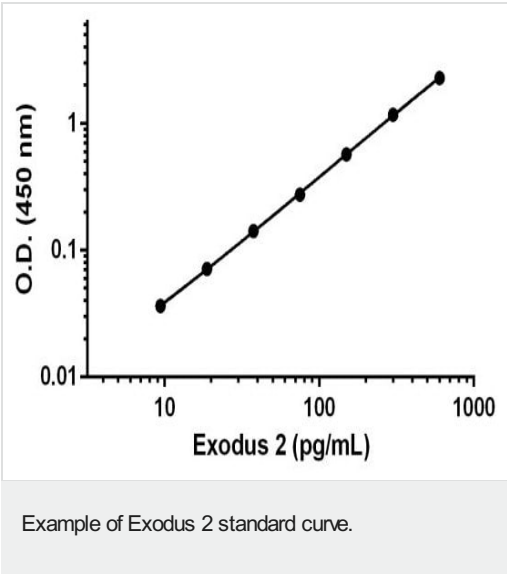
Components	1 x 96 tests	1 x 96 tests
10X Human Exodus 2 Capture Antibody	1 x 600µl	1 x 600µl
10X Human Exodus 2 Detector Antibody	1 x 600µl	1 x 600µl
10X Wash Buffer PT (ab206977)	1 x 20ml	1 x 20ml
Antibody Diluent CPI2	1 x 6ml	1 x 6ml
Human Exodus 2 Lyophilized Recombinant Protein	2 vials	2 vials
Plate Seals	1 unit	1 unit
Sample Diluent NS (ab193972)	1 x 50ml	1 x 50ml
SimpleStep Pre-Coated 96-Well Microplate (ab206978)	1 unit	1 unit
Stop Solution	1 x 12ml	1 x 12ml
TMB Development Solution	1 x 12ml	1 x 12ml

Function	Inhibits hemopoiesis and stimulates chemotaxis. Chemotactic in vitro for thymocytes and activated T-cells, but not for B-cells, macrophages, or neutrophils. Shows preferential activity towards naive T-cells. May play a role in mediating homing of lymphocytes to secondary lymphoid organs.
Tissue specificity	Highly expressed in high endothelial venules of lymph nodes, spleen and appendix. Intermediate levels found in small intestine, thyroid gland and trachea. Low level expression in thymus, bone marrow, liver, and pancreas. Also found in tonsil, fetal heart and fetal spleen.
Sequence similarities	Belongs to the intercrine beta (chemokine CC) family.
Cellular localization	Secreted.

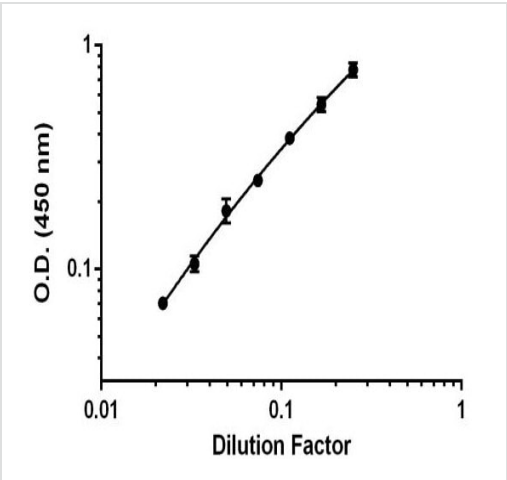
Images



SimpleStep ELISA technology allows the formation of the antibody-antigen complex in one single step, reducing assay time to 90 minutes. Add samples or standards and antibody mix to wells all at once, incubate, wash, and add your final substrate. See protocol for a detailed step-by-step guide.

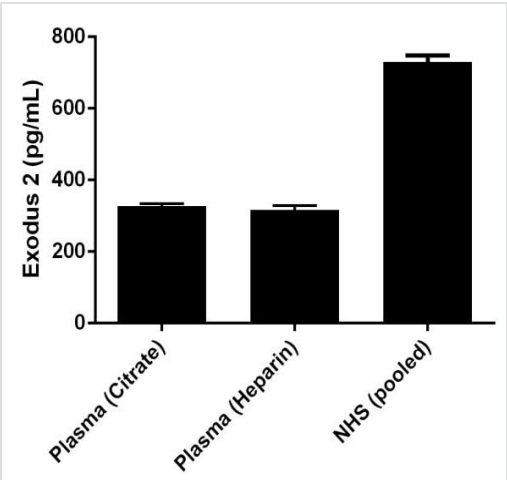


Background-subtracted data values (mean +/- SD) are graphed.



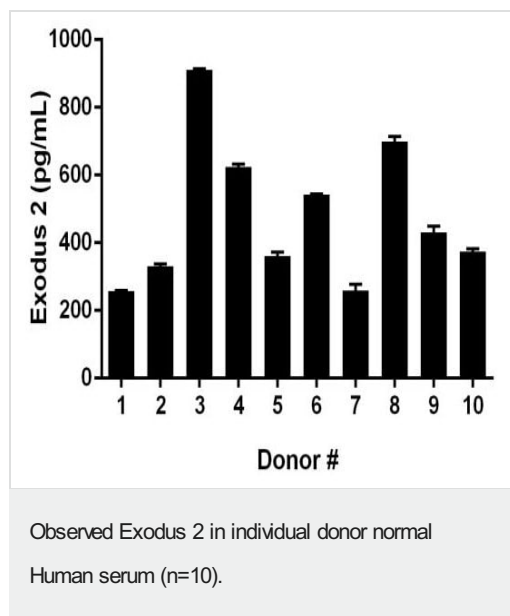
Background-subtracted data values (mean +/- SD, n = 3) are graphed

Titration of Human serum within the working range of the assay.



Mean Human Exodus 2 values fall within expected normal reference ranges (WHO).

Observed Exodus 2 levels in pooled donor (n=50), mixed gender normal Human plasma and serum.



Mean Human Exodus 2 is 479 pg/mL and values fall within expected normal reference ranges (WHO).

Please note: All products are "FOR RESEARCH USE ONLY. NOT FOR USE IN DIAGNOSTIC PROCEDURES"

Our Abpromise to you: Quality guaranteed and expert technical support

- Replacement or refund for products not performing as stated on the datasheet
- Valid for 12 months from date of delivery
- Response to your inquiry within 24 hours
- We provide support in Chinese, English, French, German, Japanese and Spanish
- Extensive multi-media technical resources to help you
- We investigate all quality concerns to ensure our products perform to the highest standards

If the product does not perform as described on this datasheet, we will offer a refund or replacement. For full details of the Abpromise, please visit <https://www.abcam.com/abpromise> or contact our technical team.

Terms and conditions

- Guarantee only valid for products bought direct from Abcam or one of our authorized distributors