

# Human FGF-21 ELISA Kit ab125966

[6 References](#) [2 Images](#)

## Overview

**Product name** Human FGF-21 ELISA Kit

**Detection method** Colorimetric

**Precision**

Intra-assay

Sample	n	Mean	SD	CV%
Overall				4.7%

Inter-assay

Sample	n	Mean	SD	CV%
Overall				7.2%

**Sample type** Cell culture supernatant, Serum, Plasma

**Assay type** Sandwich (quantitative)

**Sensitivity** 0.03 ng/ml

**Range** 0.031 ng/ml - 2 ng/ml

**Recovery** 97 %

**Assay time** 5h 00m

**Assay duration** Multiple steps standard assay

**Species reactivity** **Reacts with:** Human

**Product overview**

Abcam's FGF-21 Human *in vitro* ELISA (Enzyme-Linked Immunosorbent Assay) kit is designed for the quantitative measurement of Human FGF-21 in plasma, serum, and cell culture supernatants.

A FGF-21 specific antibody has been precoated onto 96-well plates and blocked. Standards or test samples are added to the wells and subsequently a FGF-21 specific biotinylated detection antibody is added and then followed by washing with wash buffer. Streptavidin-Peroxidase Conjugate is added and unbound conjugates are washed away with wash buffer. TMB is then used to visualize Streptavidin-Peroxidase enzymatic reaction. TMB is catalyzed by Streptavidin-Peroxidase to produce a blue color product that changes into yellow after adding acidic stop solution. The density of yellow coloration is directly proportional to the amount of FGF-21 captured in plate.

The entire kit may be stored at -20°C for long term storage before reconstitution - Avoid repeated freeze-thaw cycles.

**Platform** Microplate

## Properties

---

**Storage instructions** Store at -20°C. Please refer to protocols.

Components	1 x 96 tests
100X Streptavidin-Peroxidase Conjugate	1 x 80µl
10X Diluent N Concentrate	1 x 30ml
1X Standard Diluent	1 x 2ml
20X Wash Buffer Concentrate	2 x 30ml
50X Biotinylated Human FGF-21 Antibody	1 x 120µl
Chromogen Substrate	1 x 7ml
FGF-21 Microplate (12 x 8 well strips)	1 unit
FGF-21 Standard	1 vial
Sealing Tapes	3 units
Stop Solution	1 x 11ml

**Function** Stimulates glucose uptake in differentiated adipocytes via the induction of glucose transporter SLC2A1/GLUT1 expression (but not SLC2A4/GLUT4 expression). Activity requires the presence of KLB.

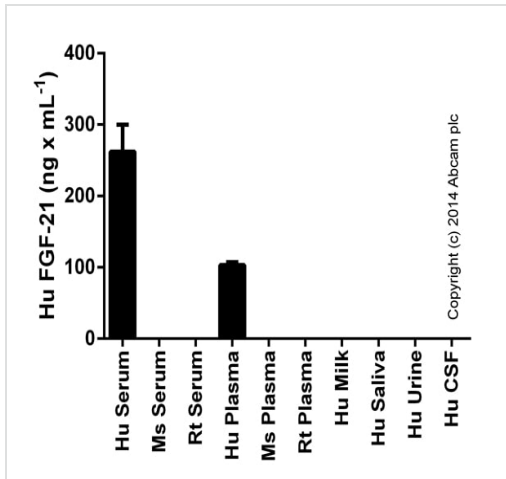
**Sequence similarities** Belongs to the heparin-binding growth factors family.

**Cellular localization** Secreted.

---

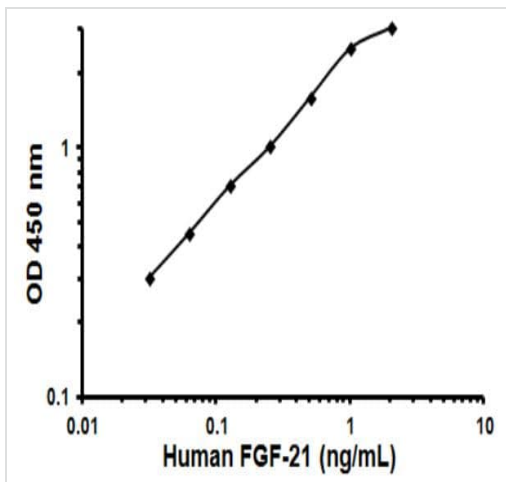
## Images

---



FGF-21 measured in biological fluids, background signal subtracted (duplicates +/- SD).

Sandwich ELISA - FGF-21 Human ELISA Kit  
(ab125966)



Representative Standard Curve using ab125966

Typical Standard Curve

**Please note:** All products are "FOR RESEARCH USE ONLY. NOT FOR USE IN DIAGNOSTIC PROCEDURES"

**Our Abpromise to you: Quality guaranteed and expert technical support**

- Replacement or refund for products not performing as stated on the datasheet
- Valid for 12 months from date of delivery

- Response to your inquiry within 24 hours
- We provide support in Chinese, English, French, German, Japanese and Spanish
- Extensive multi-media technical resources to help you
- We investigate all quality concerns to ensure our products perform to the highest standards

If the product does not perform as described on this datasheet, we will offer a refund or replacement. For full details of the Abpromise, please visit <https://www.abcam.com/abpromise> or contact our technical team.

### **Terms and conditions**

---

- Guarantee only valid for products bought direct from Abcam or one of our authorized distributors