

Product datasheet

Human GDNF ELISA Kit (Glial Derived Neurotrophic Factor) ab100525

★★★★★ [1 Abreviews](#) [6 References](#) [3 Images](#)

Overview

Product name	Human GDNF ELISA Kit (Glial Derived Neurotrophic Factor)
Detection method	Colorimetric
Sample type	Cell culture supernatant, Plasma
Assay type	Sandwich (quantitative)
Sensitivity	< 4 pg/ml
Range	2.74 pg/ml - 2000 pg/ml
Recovery	100 %

Sample specific recovery

Sample type	Average %	Range
Cell culture supernatant	119.8	85% - 140%
Plasma	99.25	86% - 113%

Assay duration Multiple steps standard assay

Species reactivity **Reacts with:** Human

Product overview Abcam's GDNF (Glial Derived Neurotrophic Factor) Human ELISA (Enzyme-Linked Immunosorbent Assay) kit is an *in vitro* enzyme linked immunosorbent assay for the quantitative measurement of Human GDNF in plasma and cell culture supernatants. (Human GDNF concentration is pretty low in normal plasma, it may not be detected in this assay).

This assay employs an antibody specific for Human GDNF coated on a 96-well plate. Standards and samples are pipetted into the wells and GDNF present in a sample is bound to the wells by the immobilized antibody. The wells are washed and biotinylated anti-Human GDNF antibody is added. After washing away unbound biotinylated antibody, HRP-conjugated streptavidin is pipetted to the wells. The wells are again washed, a TMB substrate solution is added to the wells and color develops in proportion to the amount of GDNF bound. The Stop Solution changes the color from blue to yellow, and the intensity of the color is measured at 450 nm.

We have not been able to detect the endogenous Human GDNF in normal serum with ab100525, only in serum spiked with Human GDNF.

Notes Optimization may be required with urine samples

Platform Microplate

Properties

Storage instructions Store at -20°C. Please refer to protocols.

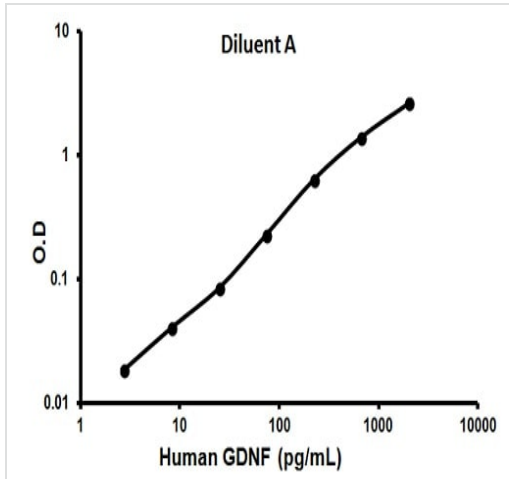
Components	1 x 96 tests
20X Wash Buffer	1 x 25ml
400X HRP-Streptavidin Concentrate	1 x 200µl
5X Assay Diluent B	1 x 15ml
Assay Diluent A	1 x 30ml
Biotinylated anti-Human GDNF	2 vials
GDNF Microplate (12 x 8 wells)	1 unit
Recombinant Human GDNF Standard (lyophilized)	2 vials
Stop Solution	1 x 8ml
TMB One-Step Substrate Reagent	1 x 12ml

Relevance

Glial cell line derived neurotrophic factor (GDNF) is a highly conserved neurotrophic factor that is a distant member of the TGF beta superfamily. The GDNF gene product is processed to a disulphide-linked homodimer, which is a ligand for the RET protooncogene. GDNF protects and repairs dopamine-containing neurons, which degenerate in Parkinson's disease, and motor neurons, which die in amyotrophic lateral sclerosis. The use of GDNF in the treatment of Parkinson's disease has shown promise in the clinic. Treatment of spinal cord injuries with GDNF has also produced neurological improvement.

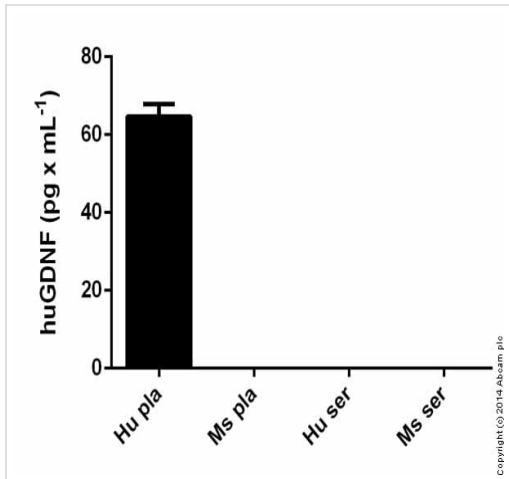
Cellular localization Secreted

Images



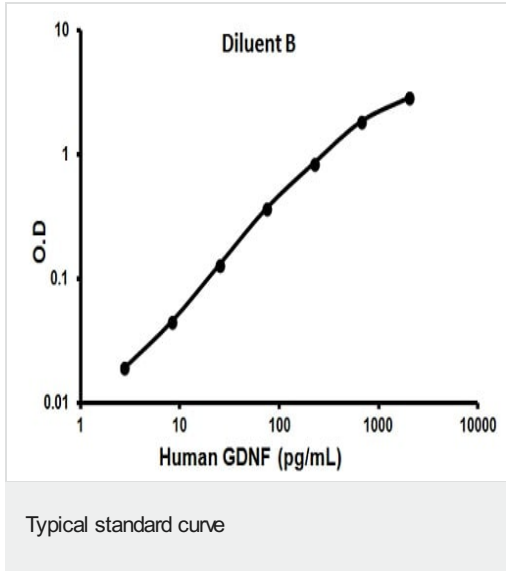
Representative standard curve using ab100525

Typical standard curve



HuGDNF measured in biological fluids showing quantity (pg) per mL of tested sample

ab100525 GDNF (Glial Derived Neurotrophic Factor)
Human ELISA Kit



Representative standard curve using ab100525

Please note: All products are "FOR RESEARCH USE ONLY. NOT FOR USE IN DIAGNOSTIC PROCEDURES"

Our Abpromise to you: Quality guaranteed and expert technical support

- Replacement or refund for products not performing as stated on the datasheet
- Valid for 12 months from date of delivery
- Response to your inquiry within 24 hours
- We provide support in Chinese, English, French, German, Japanese and Spanish
- Extensive multi-media technical resources to help you
- We investigate all quality concerns to ensure our products perform to the highest standards

If the product does not perform as described on this datasheet, we will offer a refund or replacement. For full details of the Abpromise, please visit <https://www.abcam.com/abpromise> or contact our technical team.

Terms and conditions

- Guarantee only valid for products bought direct from Abcam or one of our authorized distributors