

Human HSP60 ELISA Kit ab124534

8 Images

Overview

Product name Human HSP60 ELISA Kit

Detection method Colorimetric

Precision

Intra-assay

Sample	n	Mean	SD	CV%
Overall	4			2.1%

Inter-assay

Sample	n	Mean	SD	CV%
Overall	3			6.7%

Sample type Tissue Extracts, Cell Lysate

Assay type Sandwich (quantitative)

Assay duration Multiple steps standard assay

Species reactivity **Reacts with:** Human

Does not react with: Mouse, Rat

Product overview

ab124534 HSP60 Human ELISA (Enzyme-Linked Immunosorbent Assay) kit is an in vitro enzyme-linked immunosorbent assay for the quantitative measurement of HSP60 protein a 60 kDa protein encoded by the Human HSPD1 gene, in cell and tissue lysates. The assay employs an HSP60 specific antibody coated onto well plate strips.

Standards and samples are pipetted into the wells and analyte present in the sample is bound to the wells by the immobilized antibody. The wells are washed and an anti-HSP60 primary detector antibody is added. After washing away unbound primary detector antibody, HRP-conjugated secondary detector antibody specific for the primary detector antibody is pipetted to the wells. The wells are again washed, a TMB substrate solution is added to the wells and color develops in proportion to the amount of analyte bound. The developing blue color is measured at 600 nm.

Optionally the reaction can be stopped by adding hydrochloric acid which changes the color from blue to yellow and the intensity can be measured at 450 nm.

Species– Human reactive. Non-reactive with mouse and rat. Others untested.

Notes

Typical working ranges:

HepG2 cell extract: 0.39 - 200 µg/mL

Hela cell extract: 3.125 - 200 µg/mL

Store all components at 4°C. This kit is stable for at least 6 months from receipt. Unused microplate strips should be returned to the pouch containing the desiccant and resealed.

Platform

Microplate

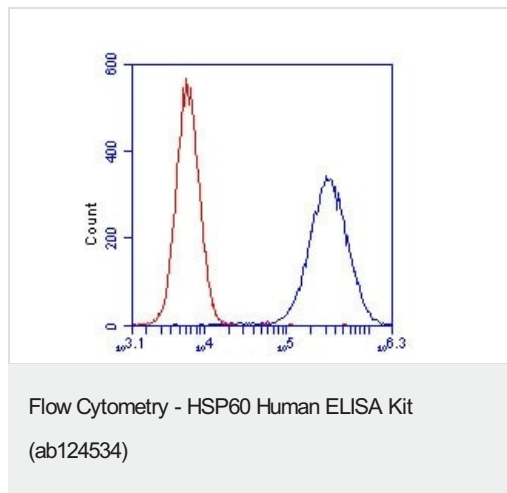
Properties

Storage instructions

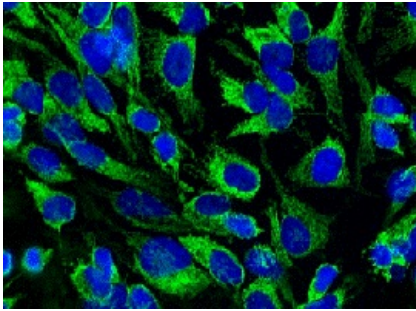
Store at +4°C. Please refer to protocols.

Components	1 x 96 tests
10X Blocking Buffer	1 x 6ml
10X HRP Label	1 x 1ml
10X HSP60 Detector Antibody	1 x 1ml
20X Buffer	1 x 20ml
Extraction Buffer (ab260490)	1 x 15ml
HSP60 Microplate	1 unit
HRP Development Solution	1 x 12ml

Images

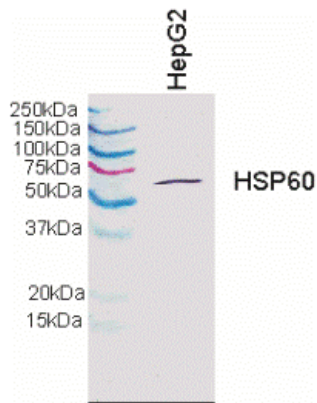


Analysis of HSP60 staining in HeLa cells by Flow: blue: 1µg/mL HSP60 antibody; red: an equal amount of an isotype control antibody.



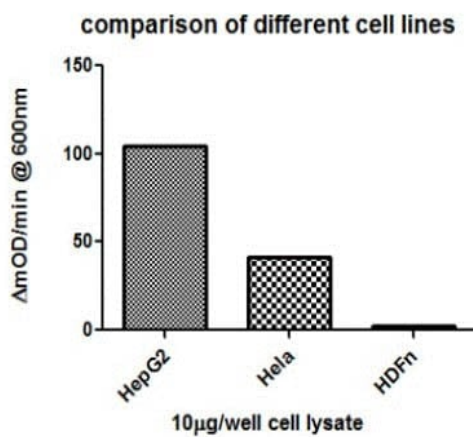
Immunocytochemistry/ Immunofluorescence -
HSP60 Human ELISA Kit (ab124534)

Analysis of HSP60 staining in HDFn cells by ICC: HSP60 primary antibody at 1 $\mu\text{g}/\text{mL}$ (green).



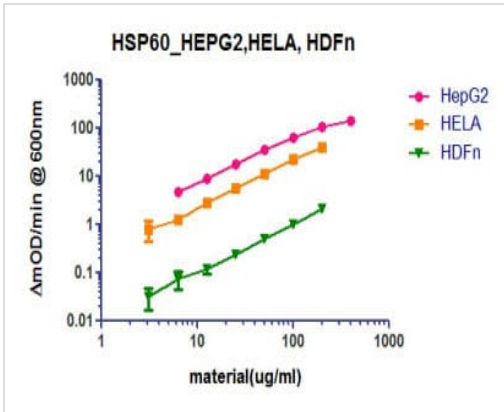
Western blot - HSP60 Human ELISA Kit (ab124534)

Western blot using the HSP60 detector antibody at 1 $\mu\text{g}/\text{mL}$ demonstrates assay specificity. HepG2 cell lysate loaded at 15 $\mu\text{g}/\text{lane}$.



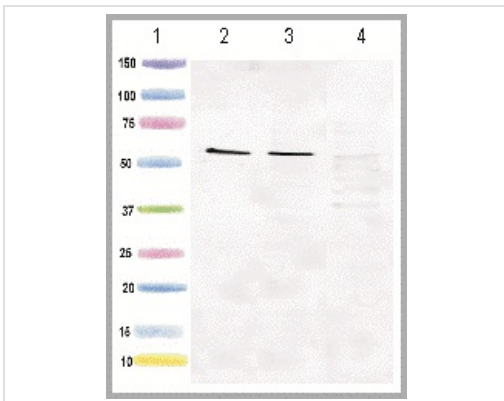
Sandwich ELISA - HSP60 Human ELISA Kit
(ab124534)

Sensitivity of HSP60 ELISA kit is used to demonstrate the quantitative differentiation among different human cell lines.

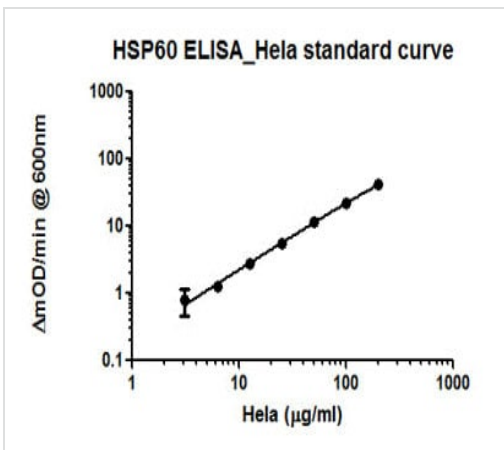


Sandwich ELISA - HSP60 Human ELISA Kit (ab124534)

Detection of endogenous HSP60 levels in different cell lysates using HSP60 ELISA kit.

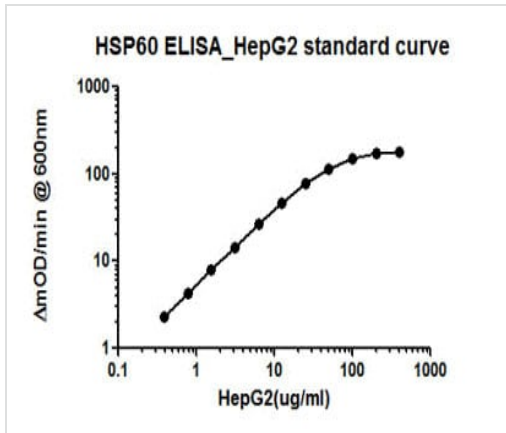


Detection of endogenous HSP60 levels in different cell lysates using Western blot. HSP60 antibody at 1 μg/mL: HepG2 cell lysate (lane 2), HeLa cell lysate (lane 3), and HDFn lysate (lane 4), each were loaded at 15 μg/lane.



Sandwich ELISA - HSP60 Human ELISA Kit (ab124534)

Example standard curve of serially titrated HeLa cell lysate in the working range of the assay.



Example standard curve of serially titrated HepG2 cell lysate in the working range of the assay.

Sandwich ELISA - HSP60 Human ELISA Kit
(ab124534)

Please note: All products are "FOR RESEARCH USE ONLY. NOT FOR USE IN DIAGNOSTIC PROCEDURES"

Our Abpromise to you: Quality guaranteed and expert technical support

- Replacement or refund for products not performing as stated on the datasheet
- Valid for 12 months from date of delivery
- Response to your inquiry within 24 hours
- We provide support in Chinese, English, French, German, Japanese and Spanish
- Extensive multi-media technical resources to help you
- We investigate all quality concerns to ensure our products perform to the highest standards

If the product does not perform as described on this datasheet, we will offer a refund or replacement. For full details of the Abpromise, please visit <https://www.abcam.com/abpromise> or contact our technical team.

Terms and conditions

- Guarantee only valid for products bought direct from Abcam or one of our authorized distributors