

Human IgG1 ELISA Kit ab100548

★★★★★ 1 Abreviews 1 References 2 Images

Overview

Product name	Human IgG1 ELISA Kit
Detection method	Colorimetric
Sample type	Cell culture supernatant, Saliva, Urine, Serum, Plasma
Assay type	Sandwich (quantitative)
Sensitivity	< 0.05 ng/ml
Range	0.05 ng/ml - 40 ng/ml
Recovery	84 %

Sample specific recovery

Sample type	Average %	Range
Serum	87	75% - 97%
Plasma	81.5	71% - 94%

Assay duration Multiple steps standard assay

Species reactivity Reacts with: Human

Product overview Abcam's IgG1 Human ELISA (Enzyme-Linked Immunosorbent Assay) kit is an *in vitro* enzyme-linked immunosorbent assay for the quantitative measurement of Human IgG1 in serum and plasma.

This assay employs an antibody specific for Human IgG1 coated on a 96-well plate. Standards and samples are pipetted into the wells and IgG1 present in a sample is bound to the wells by the immobilized antibody. The wells are washed and biotinylated anti-Human IgG1 antibody is added. After washing away unbound biotinylated antibody, HRP-conjugated streptavidin is pipetted to the wells. The wells are again washed, a TMB substrate solution is added to the wells and color develops in proportion to the amount of IgG1 bound. The Stop Solution changes the color from blue to yellow, and the intensity of the color is measured at 450 nm.

Notes Optimization may be required with urine samples

Platform Microplate

Properties



Storage instructions

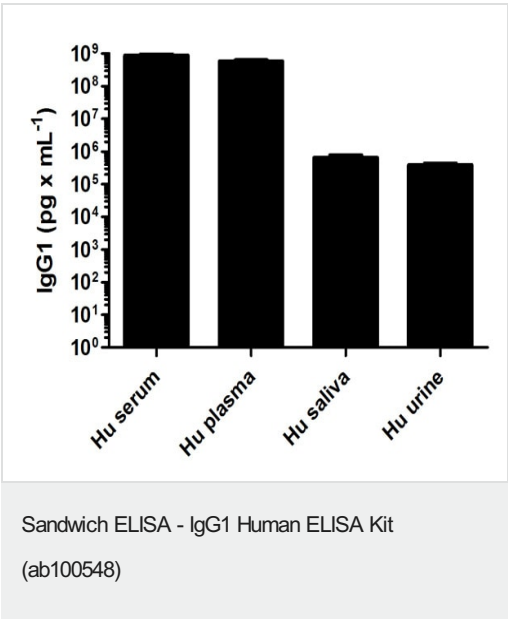
Store at -20°C. Please refer to protocols.

Components	1 x 96 tests
2,000X HRP-Streptavidin Concentrate	1 x 200µl
20X Wash Buffer	1 x 25ml
5X Assay Diluent	2 x 15ml
Biotinylated anti-Human IgG1	2 vials
IgG1 Microplate (12 x 8 wells)	1 unit
Recombinant Human IgG1 Standard (lyophilized)	2 vials
Stop Solution	1 x 8ml
TMB One-Step Substrate Reagent	1 x 12ml

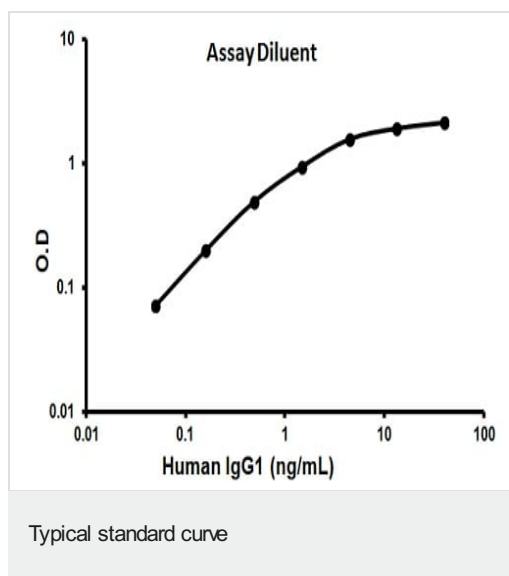
Relevance

There are four IgG subclasses (IgG1, 2, 3 and 4) in humans, named in order of their abundance in serum (IgG1 being the most abundant).

Images







Representative standard curve using ab100548

**Please note:** All products are "FOR RESEARCH USE ONLY. NOT FOR USE IN DIAGNOSTIC PROCEDURES"

### Our Abpromise to you: Quality guaranteed and expert technical support

- Replacement or refund for products not performing as stated on the datasheet
- Valid for 12 months from date of delivery
- Response to your inquiry within 24 hours
- We provide support in Chinese, English, French, German, Japanese and Spanish
- Extensive multi-media technical resources to help you
- We investigate all quality concerns to ensure our products perform to the highest standards

If the product does not perform as described on this datasheet, we will offer a refund or replacement. For full details of the Abpromise, please visit <https://www.abcam.com/abpromise> or contact our technical team.

### Terms and conditions

- Guarantee only valid for products bought direct from Abcam or one of our authorized distributors