

### Human IL-17 ELISA Set (without plates) ab83707

[2 References](#) [1 Image](#)

#### Overview

---

<b>Product name</b>	Human IL-17 ELISA Set (without plates)
<b>Sample type</b>	Cell culture supernatant, Serum, Plasma
<b>Assay type</b>	Sandwich (quantitative)
<b>Sensitivity</b>	< 3 pg/ml
<b>Range</b>	3.125 pg/ml - 100 pg/ml
<b>Assay time</b>	3h 45m
<b>Assay duration</b>	Multiple steps standard assay
<b>Species reactivity</b>	<b>Reacts with:</b> Human
<b>Product overview</b>	<p>Abcam's IL-17 Human <i>in vitro</i> ELISA Set is designed for the quantitative measurement of IL-17 in cell culture supernatants, buffered solutions, serum, plasma and other body fluids.</p> <p>The IL-17A ELISA Set includes both the capture and the detection antibodies as well as Horse-Radish peroxidase conjugated Streptavidin (HRP-Strep) and TMB which are the reagents used in the colour development step.</p> <p>This ELISA Set is intended to measure human IL-17A in cell -culture supernatants, as well as in serum and plasma samples. The enclosed procedures provide general guidelines for ELISA preparation. This procedure may need some optimization depending on the plastic, matrix, standard range.</p> <p><b>SPECIFICITY:</b> Recognizes both natural and recombinant human IL-17A</p> <p><b>RANGE:</b> 3.12pg/ml - 100pg/ml</p> <p><b>SENSITIVITY:</b> &lt;2.3pg/ml</p>
<b>Tested applications</b>	<b>Suitable for:</b> Sandwich ELISA
<b>Platform</b>	Reagents

#### Properties

---

## Storage instructions

Store at +4°C. Please refer to protocols.

Components	5 x 96 tests	10 x 96 tests
Detection biotinylated anti-IL-17 antibody	1 x 0.55ml	2 x 0.55ml
IL-17 Capture Antibody	1 x 0.5ml	2 x 0.5ml
IL-17 standard	5 vials	10 vials
Ready-to-use TMB	2 vials	4 vials
Streptavidin-HRP	1 vial	2 vials

## Function

Induces stromal cells to produce proinflammatory and hematopoietic cytokines. Enhances the surface expression of the intracellular adhesion molecule-1 (ICAM-1) in fibroblasts.

## Tissue specificity

Restricted to activated memory T-cells.

## Sequence similarities

Belongs to the IL-17 family.

## Post-translational modifications

Found both in glycosylated and nonglycosylated forms.

## Cellular localization

Secreted.

## Applications

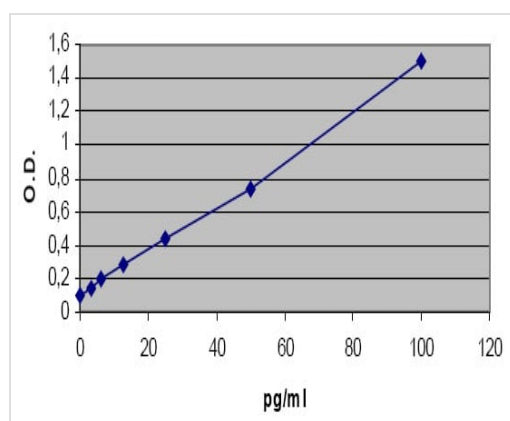
### The Abpromise guarantee

Our **Abpromise guarantee** covers the use of ab83707 in the following tested applications.

The application notes include recommended starting dilutions; optimal dilutions/concentrations should be determined by the end user.

Application	Abreviews	Notes
<b>Sandwich ELISA</b>		Use at an assay dependent concentration.

## Images



IL-17A Standard curve ranging from 3.125 to 100 pg/mL

IL-17 ELISA Set (ab83707)

**Please note:** All products are "FOR RESEARCH USE ONLY. NOT FOR USE IN DIAGNOSTIC PROCEDURES"

### **Our Abpromise to you: Quality guaranteed and expert technical support**

---

- Replacement or refund for products not performing as stated on the datasheet
- Valid for 12 months from date of delivery
- Response to your inquiry within 24 hours
  
- We provide support in Chinese, English, French, German, Japanese and Spanish
- Extensive multi-media technical resources to help you
- We investigate all quality concerns to ensure our products perform to the highest standards

If the product does not perform as described on this datasheet, we will offer a refund or replacement. For full details of the Abpromise, please visit <https://www.abcam.com/abpromise> or contact our technical team.

### **Terms and conditions**

---

- Guarantee only valid for products bought direct from Abcam or one of our authorized distributors