

Human Lipoprotein A ELISA Kit ab108878

★★★★☆ [1 Abreviews](#) [2 References](#) [2 Images](#)

Overview

Product name Human Lipoprotein A ELISA Kit

Detection method Colorimetric

Precision

Intra-assay

Sample	n	Mean	SD	CV%
Overall				4%

Inter-assay

Sample	n	Mean	SD	CV%
Overall				9.9%

Sample type Milk, Urine, Serum, Plasma, Cerebral Spinal Fluid

Assay type Sandwich (quantitative)

Sensitivity = 0.31 ng/ml

Range 1.563 ng/ml - 50 ng/ml

Recovery = 102 %

Assay time 4h 00m

Assay duration Multiple steps standard assay

Species reactivity **Reacts with:** Human

Product overview

Lipoprotein A Human *in vitro* ELISA (Enzyme-Linked Immunosorbent Assay) kit is designed for the quantitative measurement of Lipoprotein A concentrations in plasma, serum, urine, milk, CSF, cell culture supernatants, cell lysate, and tissue samples.

A Lipoprotein A specific antibody has been precoated onto 96-well plates and blocked. Standards or test samples are added to the wells and subsequently a Lipoprotein A specific biotinylated detection antibody is added and then followed by washing with wash buffer. Streptavidin-Peroxidase Conjugate is added and unbound conjugates are washed away with wash buffer. TMB is then used to visualize Streptavidin-Peroxidase enzymatic reaction. TMB is catalyzed by Streptavidin-Peroxidase to produce a blue color product that changes into yellow after adding acidic stop solution. The density of yellow coloration is directly proportional to the amount of Lipoprotein A captured in plate.

The entire kit may be stored at -20°C for long term storage before reconstitution - Avoid repeated freeze-thaw cycles.

Platform Microplate

Properties

Storage instructions Store at -20°C. Please refer to protocols.

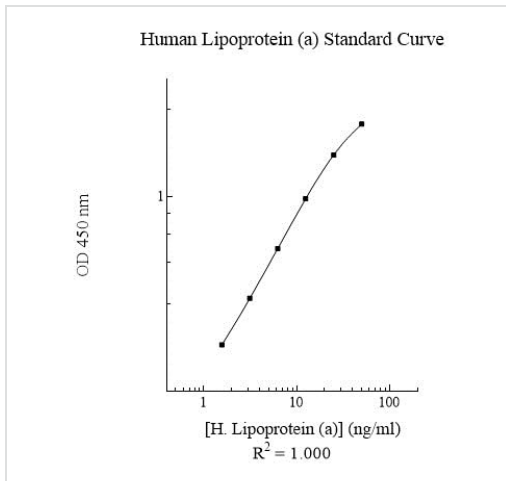
Components	1 x 96 tests
100X Streptavidin-Peroxidase Conjugate	1 x 80µl
10X Diluent M Concentrate	1 x 30ml
20X Wash Buffer Concentrate	2 x 30ml
50X Biotinylated Human Lipoprotein A Antibody	1 x 100µl
Chromogen Substrate	1 x 8ml
Lipoprotein A Microplate (12 x 8 well strips)	1 unit
Lipoprotein A Standard	1 vial
Sealing Tapes	3 units
Stop Solution	1 x 12ml

Function Apo(a) is the main constituent of lipoprotein(a) (Lp(a)). It has serine proteinase activity and is able of autoprolysis. Inhibits tissue-type plasminogen activator 1. Lp(a) may be a ligand for megalin/Gp 330.

Sequence similarities Belongs to the peptidase S1 family. Plasminogen subfamily.
Contains 38 kringle domains.
Contains 1 peptidase S1 domain.

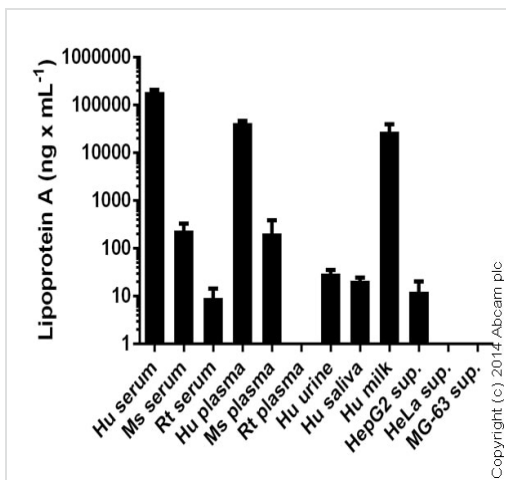
Post-translational modifications N- and O-glycosylated. The N-glycans are complex biantennary structures present in either a mono- or disialylated state. The O-glycans are mostly (80%) represented by the monosialylated core type I structure, NeuNAc α 2-3Gal β 1-3GalNAc, with smaller amounts of disialylated and non-sialylated O-glycans also detected.

Images



Standard curve: mean of duplicates (+/- SD) with background reads subtracted

Sandwich ELISA - Lipoprotein A Human ELISA Kit (ab108878)



Lipoprotein A measured in biological fluids and cell culture supernatants showing quantity (ng) per mL of tested sample. Human serum, plasma and milk samples diluted 4000-32000 fold. Human urine and saliva diluted 2-8 fold. Mouse and rat samples diluted 10-100 fold. Cell supernatants diluted 1-10 fold.

Sandwich ELISA - Lipoprotein A Human ELISA Kit (ab108878)

Please note: All products are "FOR RESEARCH USE ONLY. NOT FOR USE IN DIAGNOSTIC PROCEDURES"

Our Abpromise to you: Quality guaranteed and expert technical support

- Replacement or refund for products not performing as stated on the datasheet
- Valid for 12 months from date of delivery
- Response to your inquiry within 24 hours
- We provide support in Chinese, English, French, German, Japanese and Spanish

- Extensive multi-media technical resources to help you
- We investigate all quality concerns to ensure our products perform to the highest standards

If the product does not perform as described on this datasheet, we will offer a refund or replacement. For full details of the Abpromise, please visit <https://www.abcam.com/abpromise> or contact our technical team.

Terms and conditions

- Guarantee only valid for products bought direct from Abcam or one of our authorized distributors