

Human MIP5 ELISA Kit (CCL15) ab100598

1 References 2 Images

Overview

Product name	Human MIP5 ELISA Kit (CCL15)
Detection method	Colorimetric
Sample type	Cell culture supernatant, Serum, Plasma
Assay type	Sandwich (quantitative)
Sensitivity	< 3 pg/ml
Range	4.1 pg/ml - 1000 pg/ml
Recovery	100 %

Sample specific recovery

Sample type	Average %	Range
Cell culture supernatant	101.5	91% - 112%
Serum	105.3	92% - 115%
Plasma	98.23	90% - 114%

Assay duration Multiple steps standard assay

Species reactivity Reacts with: Human

Product overview Abcam's MIP5 Human ELISA (Enzyme-Linked Immunosorbent Assay) kit is an *in vitro* enzyme-linked immunosorbent assay for the quantitative measurement of Human MIP5 in serum, plasma, and cell culture supernatants.

This assay employs an antibody specific for Human MIP5 coated on a 96-well plate. Standards and samples are pipetted into the wells and MIP5 present in a sample is bound to the wells by the immobilized antibody. The wells are washed and biotinylated anti-Human MIP5 antibody is added. After washing away unbound biotinylated antibody, HRP-conjugated streptavidin is pipetted to the wells. The wells are again washed, a TMB substrate solution is added to the wells and color develops in proportion to the amount of MIP5 bound. The Stop Solution changes the color from blue to yellow, and the intensity of the color is measured at 450 nm.

Notes Optimization may be required with urine samples.

Platform Microplate

Properties

Storage instructions

Store at -20°C. Please refer to protocols.

Components	1 x 96 tests
20X Wash Buffer	1 x 25ml
300X HRP-Streptavidin Concentrate	1 x 200µl
5X Assay Diluent B	1 x 15ml
Assay Diluent A	1 x 30ml
Biotinylated anti-Human MIP5	2 vials
MIP5 Microplate (12 strips x 8 wells)	1 unit
Recombinant Human MIP5 Standard (lyophilized)	2 vials
Stop Solution	1 x 8ml
TMB One-Step Substrate Reagent	1 x 12ml

Function

Chemotactic factor that attracts T-cells and monocytes, but not neutrophils, eosinophils, or B-cells. Acts mainly via CC chemokine receptor CCR1. Also binds to CCR3. CCL15(22-92), CCL15(25-92) and CCL15(29-92) are more potent chemoattractants than the small-inducible cytokine A15.

Tissue specificity

Most abundant in heart, skeletal muscle and adrenal gland. Lower levels in placenta, liver, pancreas and bone marrow. CCL15(22-92), CCL15(25-92) and CCL15(29-92) are found in high levels in synovial fluids from rheumatoid patients.

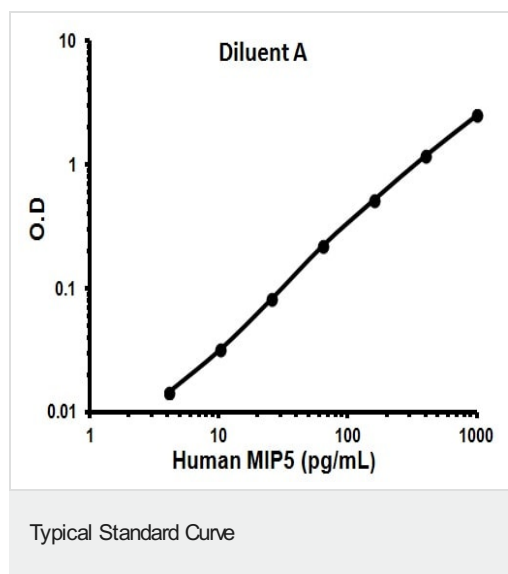
Sequence similarities

Belongs to the intercrine beta (chemokine CC) family.

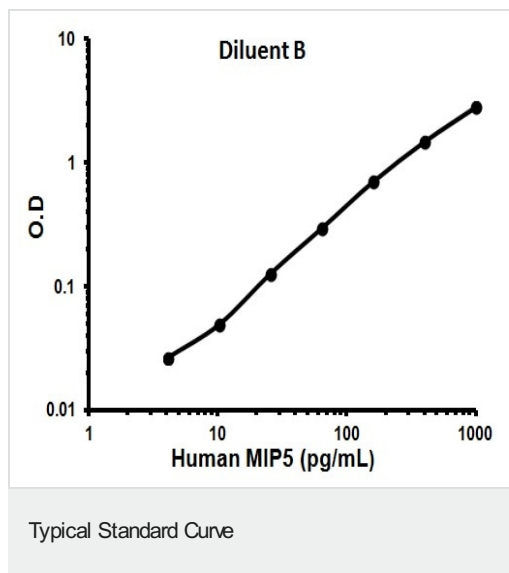
Cellular localization

Secreted.

Images



Representative Standard Curve using ab100598.



Representative Standard Curve using ab100598.

Please note: All products are "FOR RESEARCH USE ONLY. NOT FOR USE IN DIAGNOSTIC PROCEDURES"

Our Abpromise to you: Quality guaranteed and expert technical support

- Replacement or refund for products not performing as stated on the datasheet
- Valid for 12 months from date of delivery
- Response to your inquiry within 24 hours
- We provide support in Chinese, English, French, German, Japanese and Spanish
- Extensive multi-media technical resources to help you
- We investigate all quality concerns to ensure our products perform to the highest standards

If the product does not perform as described on this datasheet, we will offer a refund or replacement. For full details of the Abpromise, please visit <https://www.abcam.com/abpromise> or contact our technical team.

Terms and conditions

- Guarantee only valid for products bought direct from Abcam or one of our authorized distributors