

Human Resistin ELISA Kit ab183364

SimpleStep ELISA

3 References 4 Images

Overview

Product name Human Resistin ELISA Kit

Detection method Colorimetric

Precision Intra-assay

Sample	n	Mean	SD	CV%
Serum	9			3%

Inter-assay

Sample	n	Mean	SD	CV%
Serum	3			6%

Sample type Cell culture supernatant, Serum, Hep Plasma, EDTA Plasma, Cit plasma

Assay type Sandwich (quantitative)

Sensitivity 24 pg/ml

Range 78.1 pg/ml - 5000 pg/ml

Recovery Sample specific recovery

Sample type	Average %	Range
Serum	94	88% - 100%
Cell culture media	106	106% - 107%
Hep Plasma	95	84% - 110%
EDTA Plasma	96	88% - 104%
Cit plasma	78	68% - 90%

Assay time 1h 30m

Assay duration One step assay

Species reactivity

Reacts with: Human

Product overview

Human Resistin ELISA kit (ab183364) is a single-wash 90 min sandwich ELISA designed for the quantitative measurement of Resistin protein in human serum, plasma and cell culture supernatants. It uses our proprietary SimpleStep ELISA® technology. Quantitate human Resistin with 24 pg/mL sensitivity.

SimpleStep ELISA® technology employs capture antibodies conjugated to an affinity tag that is recognized by the monoclonal antibody used to coat our SimpleStep ELISA® plates. This approach to sandwich ELISA allows the formation of the antibody-analyte sandwich complex in a single step, significantly reducing assay time. See the SimpleStep ELISA® protocol summary in the image section for further details. Our SimpleStep ELISA® technology provides several benefits:

- Single-wash protocol reduces assay time to 90 minutes or less
- High sensitivity, specificity and reproducibility from superior antibodies
- Fully validated in biological samples
- 96-wells plate breakable into 12 x 8 wells strips

A 384-well SimpleStep ELISA® microplate ([ab203359](#)) is available to use as an alternative to the 96-well microplate provided with SimpleStep ELISA® kits.

Notes

Resistin, otherwise known as Found in Inflammatory Zone 3 (FIZZ3), and Adipocyte Secreted Factor (ADSF), is a 114 amino-acid cysteine-rich protein. It can be found as a high molecular weight hexamer or as a more active, lower molecular weight complex. Resistin is the best known member of the family of Resistin-like Molecules (RELMs), which include RELM-alpha/FIZZ1 and RELM-beta/FIZZ2, both described only in rodents. Furthermore, resistin has been categorized as part of the group of adipokines hormones, which are known to be involved in the development of obesity, insulin resistance, diabetes, inflammation, autoimmune disease and metabolic syndrome.

In Humans, Resistin is a pro-inflammatory molecule primarily secreted by macrophages and mononuclear bone marrow cells in response to inflammation, hyperglycemia, and growth hormones. IL-1, IL-6, TNF-alpha as well as lipopolysaccharide (LPS) are strong inducers of resistin as observed in animal models of hepatic inflammation and necrosis. High levels of resistin are also observed in patients with pancreatitis and with systemic lupus erythematosus.

Platform

Microplate

Properties

Storage instructions

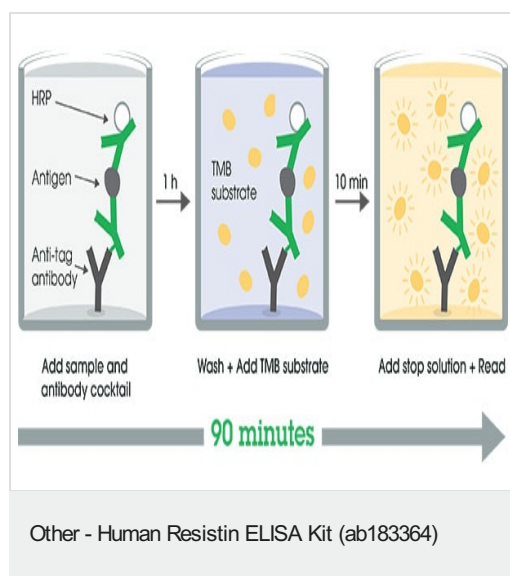
Store at +4°C. Please refer to protocols.

Components	1 x 96 tests
10X Human Resistin Capture Antibody	1 x 600µl
10X Human Resistin Detector Antibody	1 x 600µl
10X Wash Buffer PT (ab206977)	1 x 20ml
Antibody Diluent CPI - HAMA Blocker (ab193969)	1 x 6ml

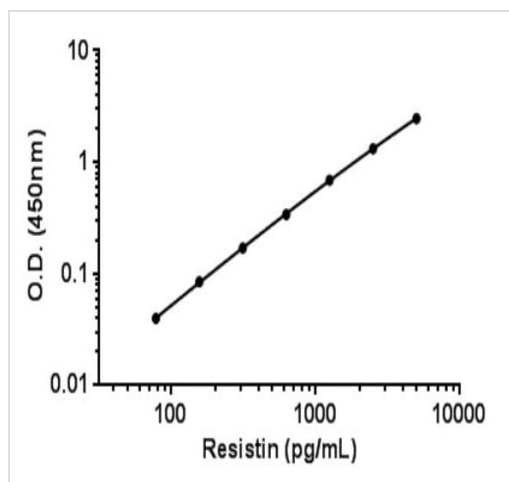
Components	1 x 96 tests
Human Resistin Lyophilized Recombinant Protein	2 vials
Plate Seals	1 unit
Sample Diluent NS (ab193972)	1 x 50ml
SimpleStep Pre-Coated 96-Well Microplate (ab206978)	1 unit
Stop Solution	1 x 12ml
TMB Development Solution	1 x 12ml

Function	Hormone that seems to suppress insulin ability to stimulate glucose uptake into adipose cells. Potentially links obesity to diabetes.
Tissue specificity	Expressed only in fatty tissues.
Sequence similarities	Belongs to the resistin/FIZZ family.
Cellular localization	Secreted.

Images

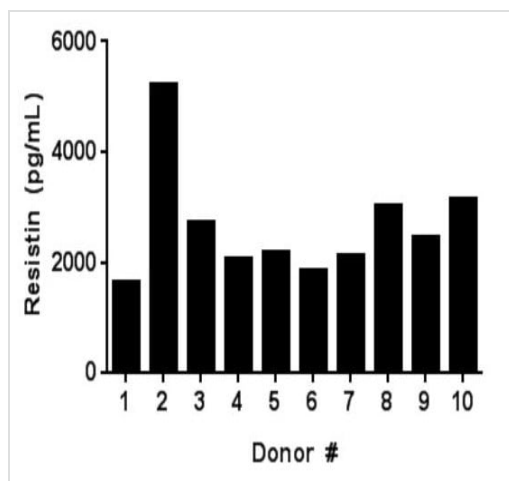


SimpleStep ELISA technology allows the formation of the antibody-antigen complex in one single step, reducing assay time to 90 minutes. Add samples or standards and antibody mix to wells all at once, incubate, wash, and add your final substrate. See protocol for a detailed step-by-step guide.



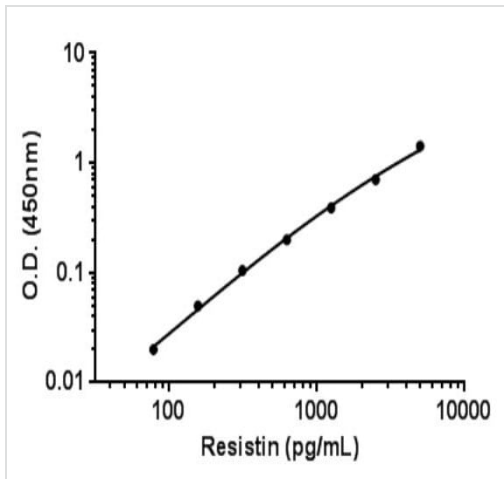
Example of Resistin standard curve.

Background-subtracted data values (mean \pm SD) are graphed



Levels of Resistin in Normal Serum.

The levels of native Resistin in serum samples were tested from ten individual healthy donors. Levels were interpolated from the standard curve in Sample Diluent NS. The mean level of Resistin was 2.6 ng/mL with a range of 1.6 to 5.3 ng/mL and a standard deviation of 1 ng/mL.



Background-subtracted data values (mean \pm SD) are graphed.

Example of Resistin standard curve in cell culture media.

Please note: All products are "FOR RESEARCH USE ONLY. NOT FOR USE IN DIAGNOSTIC PROCEDURES"

Our Abpromise to you: Quality guaranteed and expert technical support

- Replacement or refund for products not performing as stated on the datasheet
- Valid for 12 months from date of delivery
- Response to your inquiry within 24 hours
- We provide support in Chinese, English, French, German, Japanese and Spanish
- Extensive multi-media technical resources to help you
- We investigate all quality concerns to ensure our products perform to the highest standards

If the product does not perform as described on this datasheet, we will offer a refund or replacement. For full details of the Abpromise, please visit <https://www.abcam.com/abpromise> or contact our technical team.

Terms and conditions

- Guarantee only valid for products bought direct from Abcam or one of our authorized distributors