

Human Retinol binding protein ELISA Kit (RBP)
ab108899

★★★★★ 1 Abreviews 2 Images

Overview

Product name	Human Retinol binding protein ELISA Kit (RBP)				
Detection method	Colorimetric				
Precision	Intra-assay				
	Sample	n	Mean	SD	CV%
	Overall				4.6%
	Inter-assay				
	Sample	n	Mean	SD	CV%
	Overall				7.2%
Sample type	Cell culture supernatant, Saliva, Milk, Urine				
Assay type	Sandwich (quantitative)				
Sensitivity	0.0078 µg/ml				
Range	0.008 µg/ml - 0.5 µg/ml				
Recovery	98 %				
Assay time	4h 00m				
Assay duration	Multiple steps standard assay				
Species reactivity	Reacts with: Human				
Product overview	Abcam's Retinol binding protein (RBP) Human <i>in vitro</i> ELISA (Enzyme-Linked Immunosorbent Assay) kit is designed for the quantitative measurement of Retinol binding protein concentrations in Human milk, urine, CSF, saliva and cell culture supernatants.				

A Retinol binding protein specific antibody has been precoated onto 96-well plates and blocked. Standards or test samples are added to the wells and subsequently a Retinol binding protein specific biotinylated detection antibody is added and then followed by washing with wash buffer. Streptavidin-Peroxidase Conjugate is added and unbound conjugates are washed away with wash buffer. TMB is then used to visualize Streptavidin-Peroxidase enzymatic reaction. TMB is catalyzed by Streptavidin-Peroxidase to produce a blue color product that changes into yellow

after adding acidic stop solution. The density of yellow coloration is directly proportional to the amount of Retinol binding protein captured in plate.

The entire kit may be stored at -20°C for long term storage before reconstitution - Avoid repeated freeze-thaw cycles.

Platform

Microplate

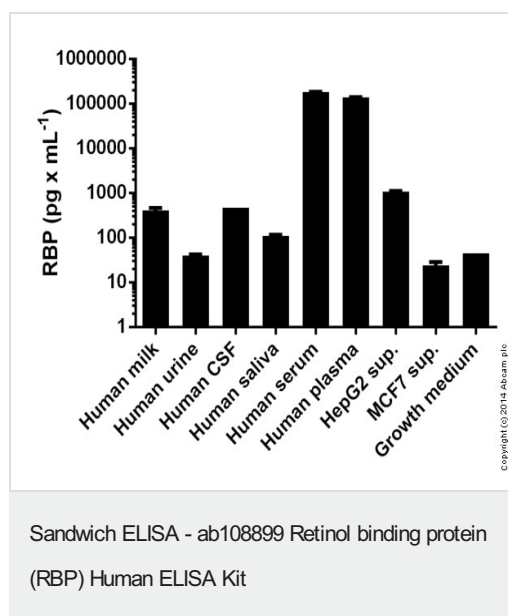
Properties

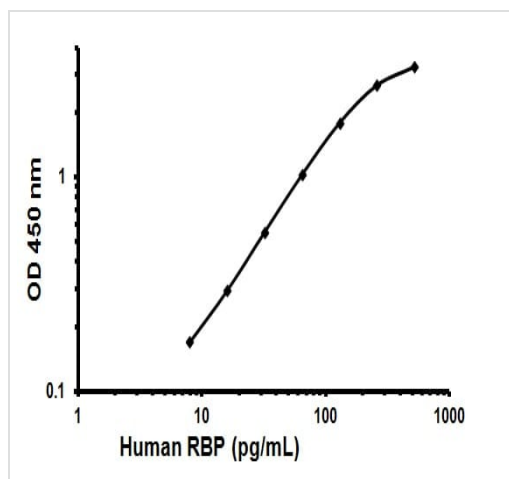
Storage instructions

Store at -20°C. Please refer to protocols.

Components	1 x 96 tests
100X Streptavidin-Peroxidase Conjugate	1 x 80µl
10X Diluent N Concentrate	1 x 30ml
20X Wash Buffer Concentrate	2 x 30ml
40X Biotinylated Human RBP Antibody	1 x 150µl
Chromogen Substrate	1 x 8ml
Retinol binding protein Microplate (12 x 8 well strips)	1 unit
Retinol binding protein Standard	1 vial
Sealing Tapes	3 units
Stop Solution	1 x 12ml

Images





Representative Standard Curve using ab108899.

Typical Standard Curve

Please note: All products are "FOR RESEARCH USE ONLY. NOT FOR USE IN DIAGNOSTIC PROCEDURES"

Our Abpromise to you: Quality guaranteed and expert technical support

- Replacement or refund for products not performing as stated on the datasheet
- Valid for 12 months from date of delivery
- Response to your inquiry within 24 hours
- We provide support in Chinese, English, French, German, Japanese and Spanish
- Extensive multi-media technical resources to help you
- We investigate all quality concerns to ensure our products perform to the highest standards

If the product does not perform as described on this datasheet, we will offer a refund or replacement. For full details of the Abpromise, please visit <https://www.abcam.com/abpromise> or contact our technical team.

Terms and conditions

- Guarantee only valid for products bought direct from Abcam or one of our authorized distributors