

Human Retinol binding protein ELISA Kit (RBP) ab137991

[1 References](#) [1 Image](#)

Overview

Product name Human Retinol binding protein ELISA Kit (RBP)

Detection method Colorimetric

Precision

Intra-assay

Sample	n	Mean	SD	CV%
Intra-assay				5.5%

Inter-assay

Sample	n	Mean	SD	CV%
Inter-assay				8.9%

Sample type Serum, Plasma

Assay type Competitive

Sensitivity 0.18 µg/ml

Range 0.781 µg/ml - 12.5 µg/ml

Recovery 98 %

Assay time 3h 00m

Assay duration Multiple steps standard assay

Species reactivity **Reacts with:** Human

Product overview

Abcam's Retinol Binding Protein (RBP) Human *in vitro* competitive ELISA (Enzyme-Linked Immunosorbent Assay) kit is designed for the quantitative measurement of RBP in plasma and serum.

A Retinol Binding Protein specific antibody has been precoated onto 96-well plates and blocked. Standards or test samples are added to the wells and subsequently biotinylated Retinol Binding Protein is added and then followed by washing with wash buffer. Streptavidin-Peroxidase Complex is added and unbound conjugates are washed away with wash buffer. TMB is then used to visualize Streptavidin-Peroxidase enzymatic reaction. TMB is catalyzed by Streptavidin-Peroxidase to produce a blue color product that changes into yellow after adding acidic stop

solution. The density of yellow coloration is inversely proportional to the amount of Retinol Binding Protein captured in plate.

The immunogen for the RBP-capture antibody is total RBP and thus the capture antibody should detect both RBP1 and RPB4, among others.

The entire kit may be stored at -20°C for long term storage before reconstitution - Avoid repeated freeze-thaw cycles.

Platform Microplate

Properties

Storage instructions Store at -20°C. Please refer to protocols.

Components	1 x 96 tests
100X Streptavidin-Peroxidase Conjugate	1 x 80µl
10X Diluent N Concentrate	1 x 30ml
20X Wash Buffer Concentrate	1 x 30ml
Biotinylated Retinol Binding Protein (Lyophilized)	1 vial
Chromogen Substrate	1 x 8ml
Retinol Binding Protein Microplate (12 x 8 well strips)	1 unit
Retinol Binding Protein Standard	1 vial
Sealing Tapes	3 units
Stop Solution	1 x 12ml

Function Intracellular transport of retinol.

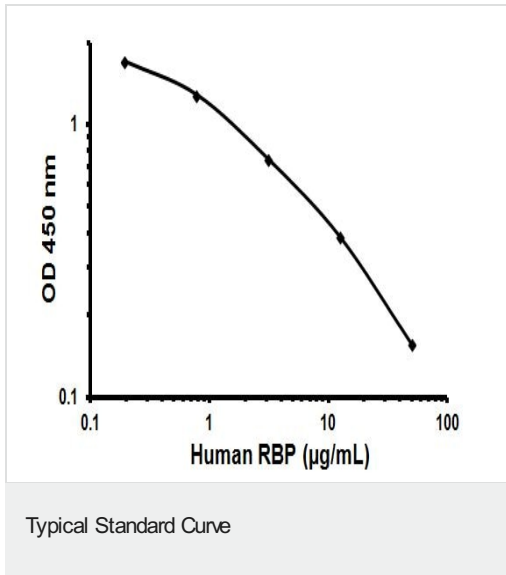
Tissue specificity Detected in nearly all the tissues with higher expression in adult ovary, pancreas, pituitary gland and adrenal gland, and fetal liver.

Sequence similarities Belongs to the calycin superfamily. Fatty-acid binding protein (FABP) family.

Domain Forms a beta-barrel structure that accommodates hydrophobic ligands in its interior.

Cellular localization Cytoplasm.

Images



Representative Standard Curve using ab137991.

Please note: All products are "FOR RESEARCH USE ONLY. NOT FOR USE IN DIAGNOSTIC PROCEDURES"

Our Abpromise to you: Quality guaranteed and expert technical support

- Replacement or refund for products not performing as stated on the datasheet
- Valid for 12 months from date of delivery
- Response to your inquiry within 24 hours
- We provide support in Chinese, English, French, German, Japanese and Spanish
- Extensive multi-media technical resources to help you
- We investigate all quality concerns to ensure our products perform to the highest standards

If the product does not perform as described on this datasheet, we will offer a refund or replacement. For full details of the Abpromise, please visit <https://www.abcam.com/abpromise> or contact our technical team.

Terms and conditions

- Guarantee only valid for products bought direct from Abcam or one of our authorized distributors